

# PHARMA



PRODUCT CATALOGUE

## GMP ACCESSORIES

ALL THE SOLUTIONS FOR THE PHARMACEUTICAL AND COSMETICS INDUSTRIES



**Solpharma**  
Technologies





## GREAT PRODUCTS THAT DO IT BETTER

Our products support industrial sectors with the highest hygiene and cleanliness standards in their day-to-day work. Whether in clean rooms, production environments, or air locks, Solpharma is your reliable partner for high quality tailor made solutions. As an experienced business, we set great value in providing you with personalised, expert advice. After all, the best solution is always the one which precisely meets your needs.

With this aspiration, we offer you products which hold their value, and which improve the efficiency, safety, and convenience of your day-to-day work. In short, we sell "Great products that do it better".

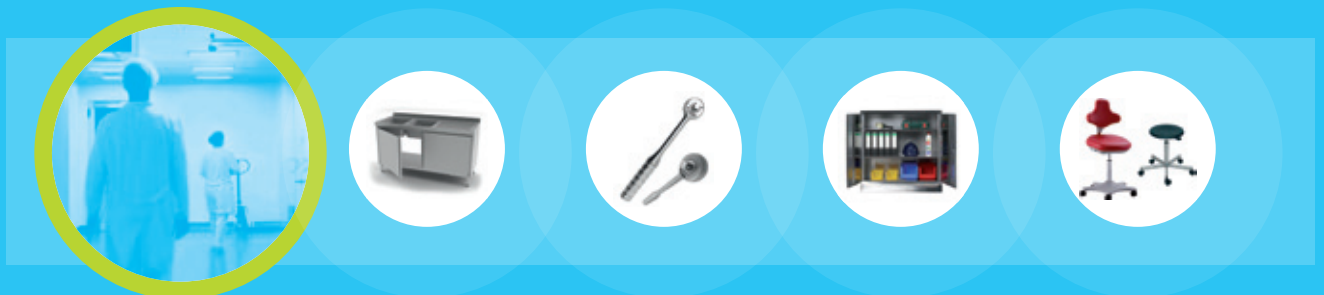
Our catalogue contains a lot of innovations and many tried and tested products which have undergone further improvements, all with the aim of better supporting you in your daily work.

Contact us to discuss the possibilities, we'll be happy to assist you.

## PRODUCTION

Stainless steel furniture, tool trolleys, tools, clean room stools and scoops.

PAGE **5**



## STORAGE

Racks, shelves, baskets, collecting troughs and wire mesh partitions.

PAGE **59**





## TRANSPORT

Lift trucks, scale systems, clean room lifters, cable winches, trolleys and pallets.

PAGE **73**



## HYGIENE/AIR LOCK

Dispensers, waste containers, storage boxes, cleaning systems, protective clothing.

PAGE **89**



## PLASTIC PRODUCTS

Transport containers, hazardous goods containers, pallets, collecting troughs and racks.

PAGE **113**







# OUR ETERNAL PROMISE: CUSTOMIZED SOLUTIONS FROM OUR HOUSE



**PRODUCTION**



## PRODUCTION STAINLESS STEEL CABINETS



1



2

### CABINET WITH HINGED DOOR(S)

- Material ■ AISI 304
- Design ■ Doors: standard smooth finish, locks in the middle with a barrel lock
- Cabinet width 500 mm with 1 door, cabinet width 1,000 mm with 2 doors
- Contents not included
- Base ■ Available with your choice of a 100 mm-high base or 4 fixed 150 mm-high legs

When ordering, please specify "S" (base) or "F" (legs) after the item no.

Figure	1		2					
Design	4 fixed shelves, loading capacity/shelf 20 kg	4 adjustable shelves, loading capacity/shelf 20 kg	4 shelves adjustable with a pitch of 20 mm, loading capacity/shelf 45 kg					
Height of base/legs (mm)	1,800/1,850		1,950/2,000					
Width (mm)	600	800	500			1,000		
Depth (mm)	500	600	400	500	600	400	500	600
Item no.	40698	40699	40100	40200	40300	40150	40250	40350



3

Figure	3		
Design	Hat shelf on left, clothes rail with 3 hooks, 4 shelves on right		
Height of base/legs (mm)	1,950/2,000		
Width (mm)	1,000		
Depth (mm)	400	500	600
Item no	40400	40450	40500

When ordering, please specify "S" (base) or "F" (legs) after the item no.



4



5



6

Figure	4		5		6	
Design	4 fixed shelves on left, hat shelf with clothes rail and 3 hooks on right		4 fixed shelves on left, 2 broom, holders on right		Hat shelf and clothes rail with 3 hooks on both left and right	
Height of base/legs (mm)	1,800/1,850		1,800/1,850		1,800/1,850	
Width (mm)	600	800	600	800	600	800
Depth (mm)	500	500	500	500	500	500
Item no.	41800	41810	41500	41510	40700	40710

When ordering, please specify "S" (base) or "F" (legs) after the item no.



## CLOTHES LOCKER

- Material ■ AISI 304, brushed
- Design ■ With barrel lock and 2 keys, with sign holder and ventilation slots
- Contents not included
- Base ■ Available with your choice of base or legs
- Also available with a sloped roof, please order separately



1



2

Compartment width 300 mm

Design	Dimensions (H x W x D) in mm	Item no.	Sloped roof add-on item no.
1 compartment with base	1,800 x 300 x 490	34750	34770
1 compartment with legs	1,940 x 300 x 490	34751	34770
2 compartments with base	1,800 x 600 x 490	34752	34772
2 compartments with legs	1,940 x 600 x 490	34753	34772
3 compartments with base	1,800 x 900 x 490	34754	34774
3 compartments with legs	1,940 x 900 x 490	34755	34774
4 compartments with base	1,800 x 1,200 x 490	34756	34776
4 compartments with legs	1,940 x 1,200 x 490	34757	34776

Compartment width 400 mm

Design	Dimensions (H x W x D) in mm	Item no.	Sloped roof add-on item no.
1 compartment with base	1,800 x 400 x 490	34760	34771
1 compartment with legs	1,940 x 400 x 490	34761	34771
2 compartments with base	1,800 x 800 x 490	34762	34773
2 compartments with legs	1,940 x 800 x 490	34763	34773
3 compartments with base	1,800 x 1,200 x 490	34764	34775
3 compartments with legs	1,940 x 1,200 x 490	34765	34775



## PRODUCTION STAINLESS STEEL CABINETS



1



2

### MULTI-LOCKER CABINET

- Material ■ AISI 304
- Door design ■ Made from brushed stainless steel, with barrel lock and 2 keys, with sign holder and ventilation slots
- Base ■ Contents not included
- With base

Figure	1	2
Design	With 4 lockable compartments	With 4 lockable compartments, each with a clothes rail and 2 hooks
Cabinet dimensions (H x W x D) in mm	1,800 x 300 x 490	1,800 x 600 x 490
Compartment dimensions (H x W) in mm	450 x 220	840 x 220
Item no.	34735	34736



3

### LOCK BOXES

- Material ■ AISI 304
- Door design ■ Standard smooth finish, with barrel lock and 2 keys
- Base ■ With 100 mm-high base

Figure	3
Design	With 12 lockable compartments
Cabinet dimensions (H x W x D) in mm	1,950 x 600 x 400
Compartment dimensions (H x W x D) in mm	280 x 300 x 380
Item no.	36901



## SUSPENDED CABINET WITH SLIDING DOORS



1

## SUSPENDED CABINET WITH HINGED DOORS



2

Figure	1				2			
Design	With 2 double-walled sliding doors with 1 height-adjustable shelf				With 2 double-walled hinged doors with 1 height-adjustable shelf			
Height (mm)	650				650			
Width (mm)	1,000	1,400	1,600	2,000	700	800	1,000	1,200
Depth (mm)	400				400			
Item no.	38060	38070	38075	38660	38760	38780	38820	38860

## SUSPENDED CABINET WITH HINGED DOOR



3



4

Figure	3	4
Design	With single-walled door, barrel lock and 2 keys, 2 adjustable shelves inside	With single-walled door, barrel lock and 2 keys, 2 adjustable shelves inside
Height (mm)	600	600
Width (mm)	350	650
Depth (mm)	320	320
Item no.	38765	38766



## PRODUCTION STAINLESS STEEL CABINETS



1



2

### F-SERIES ENVIROMENTAL CABINET

- Material ■ AISI 304
- Design ■ Doors with barrel lock
- Square perforations 20 x 20 mm
- Contents not included
- Base ■ Available with your choice of a 100 mm-high base or 4 fixed 150 mm-high legs

When ordering, please specify "S" (base) or "F" (legs) after the item no.

Figure	1			2		
Design	4 tray shelves, each with a 10 litre capacity			4 tray shelves, each with a 20 litre capacity		
Height of base/legs (mm)	1,950 / 2,000			1,950 / 2,000		
Width (mm)	500			1,000		
Depth (mm)	400	500	600	400	500	600
Item no.	40360	40361	40362	40363	40364	40365



1



2

### F-SERIES CABINET WITH WINDOWS

- Material ■ AISI 304
- Design ■ Windows made from acrylic glass
- Doors lock in the middle with a barrel lock
- Base ■ Available with your choice of a 100 mm-high base or 4 fixed 150 mm-high legs
- Contents not included

When ordering, please specify "S" (base) or "F" (legs) after the item no.

Figure	1			2		
Design	4 adjustable removable shelves Loading capacity 45 kg			4 adjustable removable shelves Loading capacity 45 kg		
Window size (mm)	1,600 x 300			1,600 x 300 per door		
Height of base/legs (mm)	1,950/2,000			1,950/2,000		
Width (mm)	500			1,000		
Depth (mm)	400	500	600	400	500	600
Item no.	40366-V	40367	40368	40369	40370	40371





## TOOL CABINET

- Material ■ AISI 304
- Door design ■ Standard smooth finish, locks in the middle with a barrel lock and 2 keys
- Base ■ Available with your choice of a 100 mm-high base or 4 fixed 150 mm-high legs
- Contents not included

When ordering, please specify  
 "S" (base) or "F" (legs) after the  
 item no.



1



2

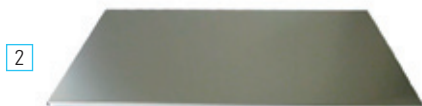
Figure	1	2		
Design	2 adjustable shelves, 2 drawers	2 adjustable shelves		
Loading capacity per shelf (kg)	45	45		
Height of base/legs (mm)	1,000/1,050	1,000/1,050		
Width (mm)	1,000	1,000		
Depth (mm)	500	400	500	600
Item no.	40555	40550	40600	40650

## ACCESSORIES FOR F-SERIES CABINETS

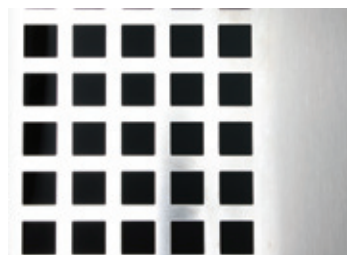
- Material ■ AISI 304



1



2



3



4

Fig.	Design	Dimensions in mm (W x D)	Item no.
1	Removable shelf, small	500 x 400	40900
1	Removable shelf, small	500 x 500	40910
1	Removable shelf, small	500 x 600	40920
2	Removable shelf, large	1,000 x 400	40700-B
2	Removable shelf, large	1,000 x 500	40710-B
2	Removable shelf, large	1,000 x 600	40720
3	Perforated door	Square 20 x 20 mm	35030
4	Perforated door	Round ø 9 mm	35040



## F-SERIES WRITING DESKS

- Material ■ AISI 304
- Door design ■ Standard smooth finish, locks in the middle with a barrel lock and 2 keys
- Base ■ Available with your choice of a 100 mm-high base, with castors or 4 fixed 150 mm-high legs
- Contents not included

F-series	Not pictured	Fig. see photo	Not pictured
Design	Hinged-door cabinet, 1 fixed shelf	Hinged-door cabinet, 2 adjustable shelves, desk and castors	Hinged-door cabinet, 2 adjustable shelves, 1 drawer
Height of base/ legs (mm)	1,000/1,050	1,080	1,000/1,050
Width (mm)	500	500	500
Depth (mm)	500	500	500
Item no.	28100	28200	28700

When ordering, please specify "S" (base), "F" (legs), or "R" (castors) after the item no.



1



2

## WRITING DESK

- Material ■ AISI 304
- Door design ■ Standard smooth finish, with barrel lock and 2 keys
- Base ■ Available with your choice of 4 legs or castors  
(4 castors, 2 of which with brakes, stainless steel housing)

Figure	1	1 (not pictured)	2
Design	Hinged-door cabinet, 1 adjustable shelf, desk and castors	Hinged-door cabinet, 1 adjustable shelf, desk and feet	Open base, 1 fixed shelf
Height (mm)	1,200	1,200	1,200
Width (mm)	600	600	600
Depth (mm)	500	500	500
Item no.	28555-R	28555-F	28565

When ordering Fig. 2, please specify "F" (legs) or "R" (castors) after the item no.

## DESK

- Material ■ AISI 304
- Design ■ Desk add-on or wall-mounted installation possible



Design	Dimensions (mm) (H x W x D)	Item no.
Desk add-on	70/270 x 495 x 495	28500
Desk, wall-mounted	70/270 x 495 x 495	28500-W

Wall-mounted installation: screws and dowels provided by customer



## HEAVY-DUTY CABINET



1

## MEAL TRAY CABINET



2

## TALL CABINET



3

Material	■ AISI 304
Door design	■ Standard smooth finish, locks in the middle with a barrel lock and 2 keys
Base	■ With 4 legs and threaded height-adjustable plastic inserts

Figure	1						2	
Item	Heavy-duty cabinet						Meal tray cabinet	
Design	4 height-adjustable shelf compartments, loading capacity per shelf approx. 80 kg, locks in the middle with a barrel lock and 2 keys						Cabinet opens from both sides with slide rails for meal trays (cabinet also available with castors), locks in the middle with barrel lock and 2 keys	
Height (mm)	2,000						2,000	
Width (mm)	1,000		1,200		1,400		1,000	1,200
Depth (mm)	500	600	500	600	500	600	600	600
Item no.	40346	40356	40366	40376	40386	40396	40397	40398

Figure	3				Not pictured		
Item	Tall cabinet with 4 sliding doors				Tall cabinet with 4 hinged doors		
Design	2 separate cabinet compartments in the middle with a fixed shelf, each compartment with 1 adjustable shelf, 2 x 2 double-walled sliding doors, without barrel lock, not lockable				2 separate cabinet compartments in the middle with a fixed shelf, each compartment with 1 adjustable shelf, 2 x 2 double-walled hinged doors, without barrel lock, not lockable		
Height (mm)	1,950				1,950		
Width (mm)	1,000	1,200	1,500	2,000	1,000	1,200	1,500
Depth (mm)	500				500		
Item no.	39010	39060	39160	39310	39011	39061	39161
Depth (mm)	600				600		
Item no.	39020	39070	39170	39320	39021	39071	39171
Depth (mm)	700				700		
Item no.	39030	39080	39180	39330	39031	39081	39181



### TOOL AND INSTRUMENT TROLLEYS

- Material ■ AISI 304
- Design ■ top and drawers not perforated  
(also available in perforated design upon request)
- Double-walled sides, open to bottom
- 1 push handle on the drawer side
- Drawers ■ mounted in telescopic stainless steel rails, centrally lockable, with drawer stops
- Not supplied with drawer dividers (available upon request)
- Drawer handle incl. space for labelling
- Castors ■ 4 castors, 2 of which with brakes
- Stainless steel wheeled housing, wheel ø: 80 mm
- With blue/grey rubber tire, treadless

Number of drawers	Panel height (mm)	Trolley dimensions (H x W x D) in mm	Item no.
6	4 x 100 / 2 x 200	1,010 x 600 x 600	24200



### TOOL AND INSTRUMENT TROLLEYS

- Material ■ AISI 304
- Design ■ top and drawers not perforated  
(also available in perforated design upon request, see fig.)
- Double-walled sides, open to bottom
- 1 push handle on the drawer side
- Drawers ■ mounted in telescopic stainless steel rails, centrally lockable, with drawer stops
- Not supplied with drawer dividers (available upon request)
- Drawer handle incl. space for labelling
- Castors ■ 4 castors, 2 of which with brakes
- Stainless steel wheeled housing, wheel ø: 80 mm
- With blue/grey rubber tire, treadless

Number of drawers	Panel height (mm)	Trolley dimensions (H x W x D) in mm	Item no.
3	3 x 150	650 x 600 x 600	25200 GH
4	4 x 150	805 x 600 x 600	24100



## TOOL TROLLEY

- Material ■ AISI 304
- Design ■ Side walls, back wall, and cover with single-walled design  
 ■ Cover fitted, bottom closed  
 ■ Drawers mounted in standard stainless steel pullouts, fully removable, incl. drawer stops  
 ■ Centrally lockable, spot-welded drawers  
 ■ Dividers available upon request  
 ■ Drawer internal dimensions (W x D): 506 x 450 mm
- Castors ■ 4 castors, 2 of which with brakes  
 ■ Stainless steel wheeled housing, wheel ø: 75 mm  
 ■ Tyre type: rubber, blue/grey, treadless, with plain bearing



Number of drawers	Panel height (mm)	Trolley dimensions (H x W x D) in mm	Item no.
3	3 x 150	650 x 600 x 600	25300
4	4 x 150	805 x 600 x 600	25350
6	4 x 100 / 2 x 200	1,010 x 600 x 600	25375

## TOOL TROLLEY

- Material ■ AISI 304
- Design ■ 1 chest of drawers with 4 drawers  
 ■ Drawers on stainless steel simple pullouts, centrally lockable  
 ■ Loading capacity per drawer 50 kg  
 ■ Bottom of drawers and of storage compartment available in your choice of a closed or perforated design
- Worktop ■ Available in your choice of stainless steel or white plastic
- Castors ■ 2 castors with brakes and 2 fixed rollers  
 ■ Wheel ø: 200 mm, stainless steel enclosure  
 ■ Solid rubber wheel, blue/grey, treadless



Design	Trolley dimensions (H x W x D) in mm	Worktop	Item no.
4 drawers, panel height 125 mm	800 x 1,200 x 800	Stainless steel	25760
4 drawers, panel height 125 mm	800 x 1,200 x 800	Plastic, white	25780
4 drawers on right, panel height 125 mm, one enclosed cabinet on left with door and 1 adjustable shelf	800 x 1,200 x 800	Stainless steel	25781

## TOOL TROLLEY

- Material ■ AISI 304
- Design ■ top and drawers not perforated (also available in perforated design upon request)  
 ■ Double-walled sides, open to bottom  
 ■ 1 drawer, 2 lockable hinged doors  
 ■ 1 welded-in shelf inside cabinet
- Castors ■ 4 castors, 2 of which with brakes  
 ■ Stainless steel wheeled housing, wheel ø: 80 mm  
 ■ With blue/grey rubber tire, treadless



Design	Trolley dimensions (H x W x D) in mm	Item no.
1 drawer, 2 lockable doors, 1 welded-in shelf in compartment	650 x 600 x 600	25100



1



2

## FOLDING-DOOR SAFETY CABINET MADE FROM SHEET STEEL

### Design

- Robust, high-quality, and scratch-resistant outer body with powder-coated structural surface
- Scratch and impact-resistant surfaces, easy to clean
- Type tested according to DIN EN 14470-1
- Fire resistant for 90 minutes
- GS-certified, CE-compliant
- DIN EN 14727 (lab furniture) compliant
- Spacesaving folding doors
- Doors lockable with profile cylinder (lock system compatible) and locking status indicator (red/green)
- Integrated transport base, base panel available as an option
- Easy to install: integrated adjustable legs to compensate for uneven floors
- Integrated extraction system for connection (NW75) to an exhaust air system
- Body of the cabinet in RAL 7016 (anthracite grey), safety yellow (RAL 1004) or light grey (RAL 7035) available as door colour choices
- Internal equipment: pull-out trays or optionally available with shelves (please order separately)

### Optional

- Recirculating air filter add-on or extraction system add-on (P19)

Equipment	Fig. 1 with 4 pull-out trays		Fig. 2 with 6 pull-out trays	
External dimensions (H x W x D) in mm	1,953 x 1,193 x 615		1,953 x 1,193 x 615	
Internal dimensions (H x W x D) in mm	1,647 x 1,050 x 522		1,647 x 1,050 x 522	
Weight empty (kg)	424		424	
Depth with doors open (mm)	943		943	
Paint	Safety yellow RAL 1004	Light grey RAL 7035	Safety yellow RAL 1004	Light grey RAL 7035
Item no.	248200	248210	248220	248230

Accessories	Item no.
Shelf – loading capacity per shelf 75 kg	248240
Base panel	248250





## S-CLASSIC-90 HAZARDOUS MATERIALS STORAGE CABINET

- Design**
- Outer body made from sheet steel, inner body with chemically-resistant surface
  - Type tested according to DIN EN 14470-1
  - Fire resistant for 90 minutes
  - GS-certified
  - Closes automatically in case of fire EN 14727
  - Integrated extraction system for connection to an exhaust air system (NW 75)
  - Doors lockable with profile cylinder, which can be integrated into a lock system
  - Doors lock in the optional locking position
  - Loading capacity per shelf 75 kg (assuming even load distribution)
  - Contents not included
- Optional**
- Recirculating air filter add-on or extraction system add-on

Many other designs available upon request!



Equipment	3 shelves, 1 bottom collecting trough (capacity 33 l) with perforated sheet insert acting as the first shelf	
External dimensions (H x W x D) in mm	1,970 x 1,200 x 615	
Internal dimensions (H x W x D) in mm	1,740 x 1,050 x 525	
Weight empty (kg)	420	
Paint	Safety yellow RAL 1004	Light grey RAL 7035
Item no.	100257	100258

## Q-CLASSIC-90 HAZARDOUS MATERIALS STORAGE CABINET

- Design**
- Type has same design as the S-Classic-90:  
see image above, but with an integrated transport base and base panel in RAL 7016 (anthracite grey)

Equipment	3 shelves, 1 bottom collecting trough (capacity 33 l) with perforated sheet insert acting as the first shelf	
External dimensions (H x W x D) in mm	1,955 x 1,200 x 615	
Internal dimensions (H x W x D) in mm	1,645 x 1,050 x 520	
Transport base (H x W) in mm	90 x 1,120	
Weight empty (kg)	424	
Paint	Body anthracite grey RAL 7016, doors safety yellow RAL 1004	
Item no.	248260	

## VENTILATION ADD-ONS

More information and designs available upon request.

Figure	1	2
Item	Recirculating air filter add-on	Extraction system add-on
Design	No money spent on wall openings and exhaust air lines	Reliable extraction of safety cabinets, fully wired and ready – safe and easy installation
Item no.	100259	100260





### PC TROLLEY

This PC trolley securely accommodates and protects your screen, computer, mouse and keyboard. Because the design of the PC trolley interior is flexible, customer-specific wishes can be accommodated. We are happy to supply additional options such as a printer shelf, and label compartment upon request.



Fig.	Housing (without keyboard and screen)	
Design	Mobile, protection class IP 65	
Cabinet dimensions (H x W x D) in mm	1,140 / 1,850 x 600 x 600	
Item no.	25790-1	

Accessories	Keyboard	TFT screen
Item no.	25790-2	25790-3

### PC DESK

- Material ■ AISI 304
- Design ■ With PC tower cabinet on left or right
- Dimensions according to customer specifications

**Item no. 25791**

More information and designs available upon request.





## ELECTROHYDRAULICALLY-ADJUSTABLE ASSEMBLY TABLE

- Material** ■ AISI 304, rugged design of 40/40 mm square tubes
- Design** ■ Profile-reinforced worktable top, 1.5 mm thick with lip all around, 50 mm folded edge
- The lifting cylinders are equipped with adjustable legs to compensate for uneven floors
- Continuously variable electrohydraulic height adjustment system in the 4 legs to adapt the table to suit people of different heights
- The height adjustment control is conveniently located for the operator and set back under the tabletop on the right-hand side
- Connection value: 0.1 kW
- Electrical connection: 230 V
- Total loading capacity: 300 kg



Adjustable from 850 mm



Up to 1,150 mm

Height (mm)	Width (mm)	Depth (mm)	Item no.
850 – 1,150	1,400	700	26710
850 – 1,150	1,600	700	26715
850 – 1,150	1,800	700	26725
850 – 1,150	2,000	700	26730
850 – 1,150	2,200	700	26735

Selection of custom adjustment ranges is possible.

## UNIVERSAL MOBILE TROLLEY

- Material** ■ AISI 304, matt-finished surface
- Design** ■ Frame consisting of 40 x 40 x 1.25 mm square tubes, 1.5 mm at bottom
- Tabletop: 40 mm thick with H-cross struts
- Moves on 4 castors, 2 of which with brakes, wheel ø: 125 mm
- 4 plastic corners
- Push handles for ends (see accessories)
- Height: 800 mm



Length (mm)	500 mm deep item no.	600 mm deep item no.	700 mm deep item no.
600	26000	26010	26020
800	26030	26040	26050
1,000	26060	26070	26080
1,200	26090	26110	26120

Accessories	Item no.
Push handles	26130



## RATCHETS



Size	Handle material	Item no.
1/4 inch	Stainless steel	142234
3/8 inch		142235
1/2 inch		142236
1/4 inch	Plastic	142237
3/8 inch		142238
1/2 inch		142239

## WRENCH SOCKETS



Size (mm)	1/4 inch	Item no. 3/8 inch	1/2 inch
4	142243	—	—
5	142244		
6	142245		
7	142246	142254	142271
8	142247	142255	
9	142248	142256	
10	142249	142257	142272
11	142250	142258	142273
12	142251	142259	142274
13	142252	142260	142275
14	142253	142261	142276
15	—	142262	142277
16		142263	142278
17		142264	142279
18		142265	142280
19		142266	142281
21		142267	142282
22		142268	142283
24		142269	142284
27		142270	142285
30		—	142286
32			142287
			142288

## EXTENSIONS, CARDAN JOINT

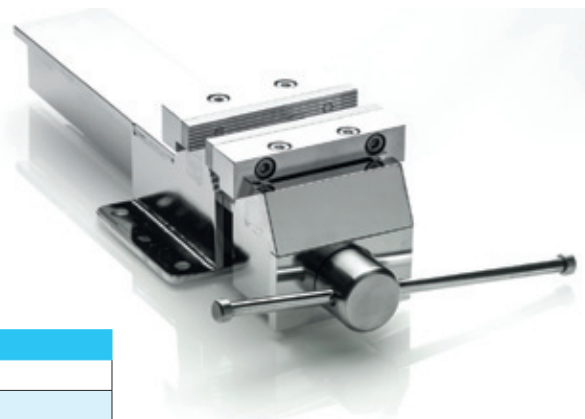


Length (mm)	1/4 inch	Item no. 3/8 inch	1/2 inch
50	142289	142292	142296
100	142290	142293	142297
150	142291	142294	142298
200	—	142295	142299
250		—	142300
Cardan joint	142301	142302	142303



## VICE

- Material ■ AISI 304, made from solid stainless steel
- Design ■ Stainless steel jaws, replaceable
- Passivated, autoclavable, sterilisable
- Opening width, max. 250 mm
- Optional POM protective jaws



Stainless steel jaw width (mm)	Item no.
100	74953
125	74951
150	74961
152	74963

POM protective jaw width (mm)	Item no.
100	74954
125	74952
150	74962
152	74964



## HAMMER WITH REPLACEABLE ENDS

- Design ■ Replaceable ends: 1 x Stainless steel / 1 x POM



Head diameter (mm)	Length (mm)	Weight (g)	Item no.
27	215	140	142076
30	195	240	142077
40	200	360	142078
40	180	550	142079
40	185	700	142080-1
40	240	550	142081

## RULER

- Design ■ Made of rust-free, hardened spring-steel strip
- Flexible



Dimensions (L x W x thickness) in mm	Graduations in mm	Item no.
300 x 30 x 0.8	0.5	142082
500 x 30 x 0.8	0.5	142083
1,000 x 30 x 0.8	0.5	142084
1,500 x 30 x 0.8	0.5	142085
2,000 x 30 x 0.8	0.5	142086
3,000 x 30 x 0.8	0.5	142087
5,000 x 30 x 0.8	0.5	142088



### FLAT PLIERS

Length (mm)	Item no.
170	142067



### FLAT PLIERS WITH CUTTER

Design	Length (mm)	Item no.
Short jaw part	165	142068
Medium jaw part	175	142069
Long jaw part	200	142070-1



### WIRE CUTTERS WITH CARBIDE INSERTS

Length (mm)	Item no.
180	142071
200	142072



### BOLT CUTTERS

Max. wire thickness (mm)	Length (mm)	Item no.
4.0	470	142073
6.0	450	142074
6.0	560	142075



### WATER PUMP PLIERS

Design ■ 7 locking positions

Max. clamping width (mm)	Length (mm)	Item no.
35	250	142065
45	300	142066





## FLAT PLIERS, ADJUSTABLE

Design ■ With 2 locking positions

Length (mm)	Item no.
200	10131



## WIRE CUTTERS

Length (mm)	Item no.
200	10021
220	100211



## OPEN-ENDED SPANNER, ADJUSTABLE

Design ■ Continuously adjustable

Length (mm)	Opening width (mm)	Item no.
150	18	10022
200	22	10023
250	30	10024
300	40	10025



## NEEDLE-NOSE PLIERS

Design ■ Jaw width at tip of pliers: 3 mm

Length (mm)	Item no.
250	10129





## DOUBLE OPEN-ENDED SPANNER



Width across flats in mm	Item no.
6 x 7	141900
8 x 9	141910
10 x 11	141920
12 x 13	141930
14 x 15	141940
16 x 17	141950
17 x 19	141960
19 x 22	141970
24 x 27	141980
30 x 32	141990

## OPEN-ENDED/RING RATCHET



Width across flats in mm	Item no.
6	142400
7	142405
8	142410
9	142415
10	142420
11	142425
12	142430
13	142435
14	142440
15	142445
16	142450
17	142455
19	142460

## OPEN-ENDED/RING SPANNER

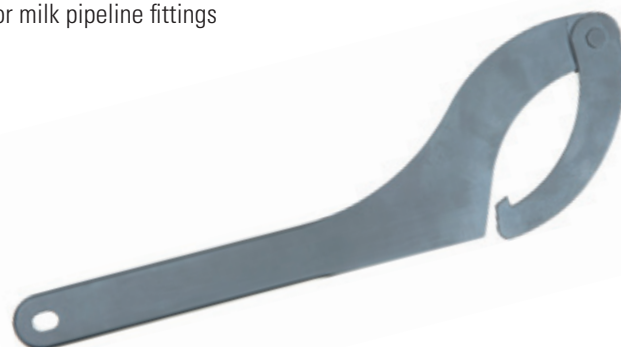


SETS – Diameter in mm	Item no.
4 piece set: 10, 13, 17, 19	142465
13 piece set: 6, 7, 8, 9, 10, 11, 12, 13, 14, 15, 16, 17, 19	142470

Width across flats in mm	Item no.
3	142000
4	142010
5	142020
6	142030
7	142040
8	142050
9	142060
10	142070
11	142080
12	142090
13	142100
14	142110
15	142120
16	142130
17	142119
18	142140
22	142150
24	142160
27	142170
32	142180
46	142190

## JOINTED HOOK SPANNER

for milk pipeline fittings



Size in mm	Item no.
20 – 35	142480
35 – 60	142490
60 – 90	142500
90 – 155	142510
155 – 230	142520

These tools are also available in inch sizes



## SCREWDRIVER WITH TORX DRIVE

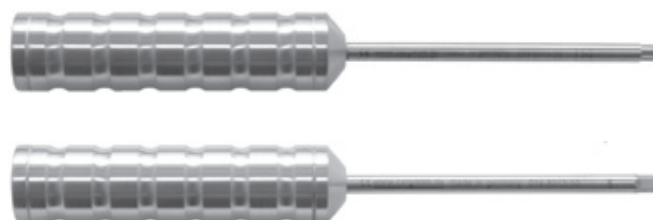
Design ■ Blade length 100 mm



Size (mm)	Item no.
T5 Torx	142184
T6 Torx	142185
T7 Torx	142186
T8 Torx	142187
T9 Torx	142188
T10 Torx	142189
T15 Torx	142190-1
T20 Torx	142191
T25 Torx	142192
T30Torx	142193

## SOCKET WRENCH, ALLEN SOCKET

Design ■ Blade length 100 mm



Size (mm)	Item no.
4	142194
5	142195
6	142196
7	142197
8	142198
9	142199
10	142200

## BALL-HEADED ALLEN KEYS (LONG VERSION)

Item description	Item no.
1.5 mm ball-headed L-shape Allen key, length 90 mm	142201
2.0 mm ball-headed L-shape Allen key, length 100 mm	142202
2.5 mm ball-headed L-shape Allen key, length 110 mm	142203
3.0 mm ball-headed L-shape Allen key, length 124 mm	142204
4.0 mm ball-headed L-shape Allen key, length 140 mm	142205
5.0 mm ball-headed L-shape Allen key, length 155 mm	142206
6.0 mm ball-headed L-shape Allen key, length 170 mm	142207
8.0 mm ball-headed L-shape Allen key, length 195 mm	142208
10.0 mm ball-headed L-shape Allen key, length 225 mm	142209
9-piece set of ball-headed L-shape Allen keys (sizes 1.5-10.0 mm)	142210

These tools are also available in inch sizes



## ALLEN KEYS (SHORT VERSION)

Item description	Item no.
1.5 mm L-shape Allen key, short version, length 46 mm	142211
2.0 mm L-shape Allen key, short version, length 52 mm	142212
2.5 mm L-shape Allen key, short version, length 58.5 mm	142213
3.0 mm L-shape Allen key, short version, length 66 mm	142214
4.0 mm L-shape Allen key, short version, length 74 mm	142215
5.0 mm L-shape Allen key, short version, length 85 mm	142216
6.0 mm L-shape Allen key, short version, length 96 mm	142217
8.0 mm L-shape Allen key, short version, length 108 mm	142218
10.0 mm L-shape Allen key, short version, length 122 mm	142219
9-piece set of L-shape Allen keys, short version (sizes 1.5-10.0 mm)	142220

These tools are also available in inch sizes





## SCREWDRIVERS



Stainless steel slotted screwdrivers				Slotted screwdrivers with plastic handle			
Long (blade length 100 mm)		Short (blade length 35 mm)		Long (blade length 100 mm)		Short (blade length 35 mm)	
Dimension (mm)	Item no.	Dimension (mm)	Item no.	Dimension (mm)	Item no.	Dimension (mm)	Item no.
3	142126	3	142132	3	142138	3	142144
4	142127	4	142133	4	142139	4	142145
5	142128	5	142134	5	142140-1	5	142146
6	142129	6	142135	6	142141	6	142147
8	142130-1	8	142136	8	142142	8	142148
10	142131	10	142137	10	142143	10	142149

Stainless steel phillips screwdrivers				Phillips screwdrivers with plastic handle			
Long (blade length 100 mm)		Short (blade length 35 mm)		Long (blade length 100 mm)		Short (blade length 35 mm)	
Dimension (mm)	Item no.	Dimension (mm)	Item no.	Dimension (mm)	Item no.	Dimension (mm)	Item no.
Phillips 0	142150-1	Phillips 0	142154	Phillips 0	142158	Phillips 0	142162
Phillips 1	142151	Phillips 1	142155	Phillips 1	142159	Phillips 1	142163
Phillips 2	142152	Phillips 2	142156	Phillips 2	142160-1	Phillips 2	142164
Phillips 3	142153	Phillips 3	142157	Phillips 3	142161	Phillips 3	142165
Pozidrive 0	142166	Pozidrive 0	142171	Pozidrive 0	142175	Pozidrive 0	142179
Pozidrive 1	142167	Pozidrive 1	142172	Pozidrive 1	142176	Pozidrive 1	142181
Pozidrive 2	142168	Pozidrive 2	142173	Pozidrive 2	142177	Pozidrive 2	142182
Pozidrive 3	142169	Pozidrive 3	142174	Pozidrive 3	142178	Pozidrive 3	142183



## LABSTER LAB CHAIR

Labster is the first chair truly designed for the lab environment. It has no corners or edges. This is due to its innovative, seamless design concept, in which even the mechanism disappears under a washable soft-covering. This means there are no gaps or joins for micro-organisms to accumulate in. All surfaces can be quickly and thoroughly cleaned. The cushions are resistant to all common disinfectants.

### Design

- According to GMP guidelines, GS-tested for safety, complies with DIN 68877
- Fulfils the requirements for use in biotechnology labs (safety classes S1, S2 and S3)
- Suitable for clean rooms of air purity class 1 – 3 according to DIN EN ISO 14644-1



Seat height (mm)	Design	Covering	Item no.
400 - 510	With castors, no footplate base	Skai imitation leather	65480-
400 - 510	With castors, no footplate base	Integral foam	65490-
450 - 650	With castors, no footplate base	Skai imitation leather	65500-
450 - 650	With castors, no footplate base	Integral foam	65510-
450 - 650	With castors and footplate base	Skai imitation leather	65520-
450 - 650	With castors and footplate base	Integral foam	65530-
550 - 800	With sliders and footplate base	Skai imitation leather	65570-
550 - 800	With sliders and footplate base	Integral foam	65580-

Please specify the desired colour after the item no.: 1= Black, 2= Blue, 3= Grey, 4= Red, 5= Mint, 6= White /

for integral foam: 1= Black, 3= Grey

## ESD LABSTER LAB CHAIR (NOT PICTURED)

### Design

- Electrically conductive

Seat height (mm)	Design	Covering	Item no.
400 - 510	With castors	Skai imitation leather, black	65481
400 - 510	With castors	Integral foam, black	65482
550 - 800	With sliders and footplate base	Skai imitation leather, black	65483
550 - 800	With sliders and footplate base	Integral foam, black	65484



## CLEAN ROOM CHAIR

### Design

- With conductive castors – Fig. 1
- With conductive sliders – Fig. 2
- With seat height adjustment
- With backrest height adjustment
- Metal parts are epoxy-resin coated and conductive
- All plastic parts are volume conductive
- Conductive, non-slip imitation leather coating
- Air purity class 1 according to MS Fed. Std. 209E
- Air purity class 3 according to EN 14644-1

Fig. 1 – Seat height (mm)	Backrest height (mm)	Mechanism	Item no.
440 - 565	380	Permanent contact	65200
480 - 640	380	Permanent contact	65210
440 - 565	500	Permanent contact	65220
480 - 640	500	Permanent contact	65230

Fig. 2 – Seat height (mm)	Backrest height (mm)	Gliders	Mechanism	Item no.
630 - 890	380	Plastic	Permanent contact	65280

Accessories	Item no.
Ring armrests, light grey, suitable for item nos 65200, 65210, 65220, 65230, 65280	65300

## NEON CHAIR

### Design

- With castors, gliders, or foot rest with gliders
- Ergonomically shaped backrest tapered to the top
- Continuous seat height adjustment from 450 – 620 mm & 590 – 870 mm
- Replaceable cushion elements
- Ergonomics pack consisting of: weight regulation, seat depth/tilt and backrest-height adjustment, aluminium base
- Various cushion variants are available:
  - Integral foam for lab and production use, including ESD version
  - Imitation leather for lab and production use, including ESD version
- Suitable for: ISO7, clean room class C

Please also specify the desired cushion variant after the item no.: Integral foam = IS or Imitation leather = K

The standard colour for the flex band around the edge is orange. It is also available in the following colours: green, blue, and grey. Please indicate your colour choice when making your order.

Seat height (mm)	Design	Mechanism	Standard item no.	ESD item no.
450 – 620	Castors	Permanent contact	65310-	65311-
450 – 620	Gliders	Permanent contact	65320-	65321-
590 – 870	Gliders and foot rest	Permanent contact	65330-	65331-





## LABSTER STOOL

- Design
- Design and processing same as that of the Labster chair (P46)



Seat height (mm)	Design	Covering	Item no.
450 - 650	Footplate base with castors	Skai imitation leather	65540-
450 - 650	Footplate base with castors	Integral foam	65550-

Please specify the desired colour after the item no.:

for imitation leather: 1= Black, 2= Blue, 3= Grey, 4= Red, 5= Mint, 6= White / for integral foam: 1= Black, 3= Grey

## ESD LABSTER STOOL (NOT PICTURED)

- Design
- Design and processing same as that of the Labster chair (P46)
  - Electrically conductive

Seat height (mm)	Design	Covering	Item no.
450 - 650	Footplate base with castors	Skai imitation leather, black	65541
450 - 650	Footplate base with castors	Integral foam, black	65551

## LABSTER STANDING AID

- Design
- Design and processing same as that of the Labster chair (P46)

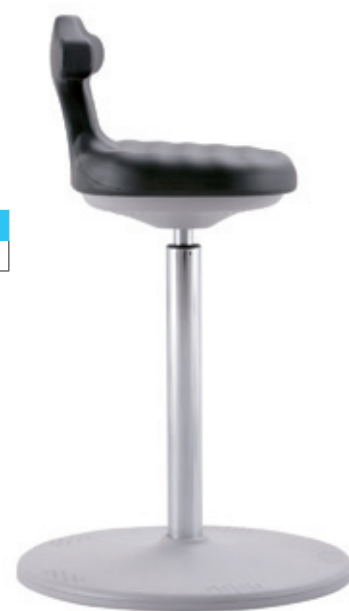
Seat height (mm)	Design	Covering	Item no.
650 - 850	Swivel footplate	Integral foam	65560-

Please specify the desired colour after the item no.: 1= Black, 3= Grey

## ESD LABSTER STANDING AID (NOT PICTURED)

- Design
- Design and processing same as that of the Labster chair (P46)
  - Electrically conductive

Seat height (mm)	Design	Covering	Item no.
650 - 850	Swivel footplate	Integral foam, black	65561





## ALUMINIUM STANDING AIDS

- Design
- Robust aluminium frame
  - Comfort handles
  - SoftTouch PU foam seat with replaceable gliders
  - Gas spring height adjustment
  - Black seat colour
  - Adjustable from 660 – 930 mm

Item no. 650011

Item no. 650012 (ESD version)



## STAINLESS STEEL STANDING AIDS

- Design
- Collapsible, height adjustable
  - Fold-up seat
  - Non-rotating seat
  - Seat dimensions (W x D): 360 x 220 mm
  - PU foam seat
  - Black colour

Item no. 650020



## STAINLESS STEEL WORK CHAIR

- Design
- Large-format PU seat and backrest
  - With stainless steel insert
  - Available in blue or black
  - Asynchronous mechanism for continuous adjustment of seat and backrest
  - Stainless steel base
  - With stainless steel safety gas spring
  - Also available with footrest

Seat height (mm)	Design	Item no.
440 – 630	Gliders	65340-
500 – 690	Castors	65350-

Accessories	Design	Item no.
Footrest	Stainless steel	65341

Please also specify the desired colour after the item no.: Blue=B or Black=S.



## STAINLESS STEEL ROTATING STOOL

- Design
- High-quality stainless steel rotating stool made from robust materials
  - PU foam seat
  - Available in blue or black
  - With stainless steel insert
  - Stainless steel base
  - With stainless steel safety gas spring
  - With castors or gliders

Seat height (mm)	Design	Item no.
380 – 540	Gliders	65360-
440 – 600	Castors	65370-
440 – 630	Gliders	65380-
500 – 690	Castors	65390-

Please also specify the desired colour after the item no.: Blue=B or Black=S.





## SAFETY CANS

### Design

- Explosion protection provided by flame arresters and overpressure valves
- Metering device, self-closing
- Material AISI 316 Ti, PTFE seals
- Wall thickness 0.6 mm, ergonomic handles made of powder-coated aluminium
- shockproof and compliant with technical rules for combustible liquids (TRbF)

Capacity (litres)	Diameter with ring (mm)	Height (mm)	With metering device and overpressure valve	With screw cap and overpressure valve	With screw cap and UN transport approval*
0.5	95	200	86440	86450	—
1	111	235	86350	86360	86370
2	131	295	86380	86390	86400
5	165	400	86410	86420	86430

\*Stainless steel handles, matt surface, no overpressure valve



## SAFETY CANISTERS

### Design

- Explosion protection provided by flame arresters and overpressure valves
- Metering device and dispensing taps, self-closing
- Material AISI 316 Ti for 5 l and 10 l capacity  
Material AISI 304 for 20 l capacity, PTFE seals
- Wall thickness 0.8 mm, ergonomic handles made of solid stainless steel
- shockproof and compliant with technical rules for combustible liquids (TRbF)

Capacity (litres)	Height (mm)	With metering device and overpressure valve	With screw cap and overpressure valve	With 1 1/2" dispensing tap and sep. ventilation	With screw cap and UN transport approval*
5	310	86110	86120	86130	86140
10	380	86150	86160	86170	86180
20	470	86190	86200	86210	86220

\*No overpressure valve



## SAFETY STORAGE VESSELS

### Design

- Explosion protection provided by flame arresters and overpressure valves
- Metering device and dispensing taps, self-closing
- Material AISI 316 Ti for 10 l capacity  
Material AISI 304 for 25 l, 50 l & 100 l capacity, PTFE seals, level indicators made from PFA tubing
- shockproof and compliant with technical rules for combustible liquids (TRbF)

Capacity (litres)	Height (mm)	With 3/4" dispensing tap* and overpressure valve	With screw cap and overpressure valve	With 3/4" dispensing tap* and level indicator	With screw cap and UN transport approval*
10	350	86230	86240	86250	86251
25	530	86260	86270	86280	86281
50	600	86290	86300	86310	—

\*No overpressure valve / \*\*No residual drainage via dispensing tap



## PRODUCTION STAINLESS STEEL FUNNELS



### FUNNEL

Material

■ AISI 304

Design

- With side slot for discharging air from the vessel (not for item 57061)
- Polished satin finish
- With handle (not for item 57061)
- Sterilisable
- Heavy-duty quality
- Funnel available in special sizes

Capacity (litres)	Throughput $\phi$ (mm)	Internal $\phi$ (mm)	Height (mm)	Item no.
0.02	10	45	70	57061
0.10	15	90	120	57062
0.25	15	110	140	57063
0.40	22	140	170	57064
1.00	22	190	200	57065
2.00	22	230	240	57066
6.00	18	290	330	57067



### FUNNEL FOR LIQUIDS

Material

■ AISI 304, polished

Design

- With spout for better emptying (not for item no. 58011)
- With hang-up loops
- Tapered outlet tube

Funnel (bottom) $\phi$ in mm	Funnel (top) $\phi$ in mm	Height (mm)	Item no.
8	50	65	58011
12	100	120	58012
12	120	140	58013
12	150	160	58014
20	200	200	58015
20	250	325	58016
20	310	325	58017



### FUNNEL FOR POWDER

Material

■ AISI 316, polished

Design

■ With 2" nozzle

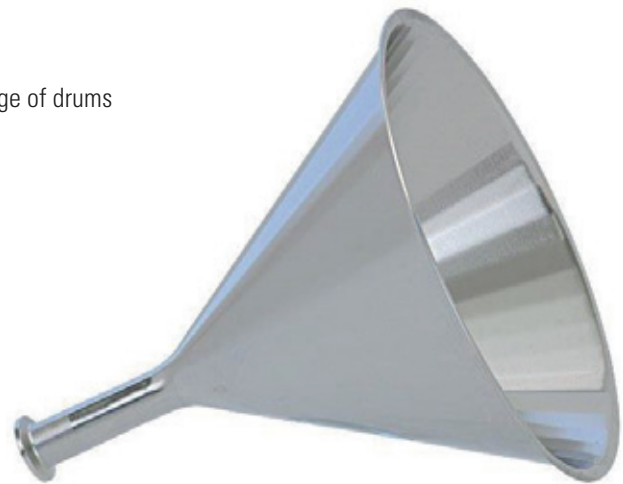
Funnel (bottom) $\phi$ in mm	Funnel (top) $\phi$ in mm	Height (mm)	Item no.
38	200	230	58019
50	300	300	58020



## TIGHT-HEAD FUNNEL

- Material ■ AISI 304
- Design ■ Safe, dust-free, metered, and problem-free drainage of drums  
■ Dust and waste-free siphoning of drums  
■ Material thickness: 1.5 mm  
■ Filling hopper for liquid media  
■ Sizes upon request

Item no. 58018



## MACHINE AND PLANT FUNNEL (SYMMETRICAL / ASYMMETRICAL)

- Material ■ AISI 304
- Design ■ Safe, dust-free, metered, and problem-free drainage of drums  
■ Dust and waste-free siphoning of drums  
■ Material thickness: 1.5 mm  
■ Standard inclination of 60° and 90°  
■ Symmetrical or asymmetrical funnel shape available  
■ Available with metering lever upon request  
■ Dimensions and designs according to customer's requests





## PRODUCTION STAINLESS STEEL CONTAINERS



### CONTAINER

- Material ■ AISI 304, glossy satin finish
- Design ■ With lid and handle

Design	Capacity (litres)	Diameter (mm)	Height (mm)	Thickness (mm)	Item no.
No base ring, with carry handle	2	130	170	0.8	57000
	3	155	180	0.8	57001
	5	175	220	0.8	57002
With base ring and carry handle	5	175	240	0.8	57003
	8	200	285	0.8	57004
	10	220	295	0.8	57005



### CONTAINER, CYLINDRICAL

- Material ■ AISI 304
- Design ■ Glossy satin finish
- No handles
- Extra heavy-duty quality

Capacity (litres)	Height (mm)	Outer diameter (mm)	Item no.
1	155	105	57006
2	170	140	57007
3	185	165	57008
4	190	185	57009
5	230	185	57010
6	270	185	57011
10	280	230	57012



### TRANSPORT CONTAINER

- Material ■ AISI 304
- Design ■ High-gloss finish, with lid
- Silicone seal ring, with three clamp fasteners
- Any over/underpressure can be compensated for via a valve in the lid
- Heavy-duty quality

Capacity (litres)	Height (mm)	Inner diameter (mm)	Item no.
6.5	160	240	57036
10.5	250	240	57037
15.5	230	300	57038





## CONTAINER WITH HANDLES

- Material ■ AISI 304/AISI 316 glossy satin finish
- Design ■ Available in two materials
- Uniform material thickness:
- With base ring and handles
- Lightweight quality
- Type 1: AISI 304: please order lid separately
- Type 2: AISI 316: design with loosely seated lid (no silicone seal)
- Type 3: AISI 316: design with lid, clamp fasteners, and silicone seal



### Type 1: material AISI 304

Capacity (litres)	Height (mm)	Diameter (mm)	Thickness (mm)	Container item no.	Lid item no.
20	395	265	1.0	70420	70520
25	395	300	1.0	70425	70525
30	465	300	1.0	70430	70530
50	555	340	1.0	70450	70550
75	620	400	1.0	70475	70575
100	670	450	1.1	704100	70510
150	670	550	1.2	704150	70515

### Type 2: material AISI 316, no clamp fasteners

Capacity (litres)	Height (mm)	Diameter (mm)	Item no.
20	390	265	70745
25	390	300	70750
30	455	300	70755
50	560	350	70760
75	625	400	70765
100	675	445	70770

### Type 3: material AISI 316, lid with clamp fasteners & FDA-compliant silicone seals

Capacity (litres)	Height (mm)	Diameter (mm)	Clamping seals	Item no.
20	390	265	3	70700
25	390	300	3	70720
30	455	300	3	70725
50	560	350	4	70730
75	625	400	4	70735
100	675	445	4	70740





## PRODUCTION STAINLESS STEEL CONTAINERS



### DOLLY

Material

■ AISI 304

Design

- With 4 rubber castors, 1 of which with a brake
- Plastic castors available upon request
- 30 mm bent-up ends

Suitable for containers	Loading height (mm)	Wheel diameter (mm)	Item
70425 & 70430	110	70	70625
70450	110	70	70650
70475	110	70	70675
704100	140	100	706100
704150	140	100	70615



### MINI CONTAINER, SEALABLE

Material

■ AISI 316 L, satin finish

Design

- Small-volume containers with lid
- No welded seams, making them easy to clean
- Very robust
- Lid with FDA-compliant screw-on silicone ring (not for item no. 70775)



Capacity (ml)	Height (mm)	Diameter (mm)	Item no.
7	45	16	70775
25	40	38	70785
50	50	50	70790
100	71	50	70795
250	75	75	70800
500	80	100	70810
750	117	100	70815
1,000	155	100	70820



## PANS

- Material ■ AISI 304
- Design ■ Polished satin finish
- Stackable, heavy-duty quality



Capacity (litres)	Height (mm)	Width (mm)	Length (mm)	Item no.
4.0	75	240	240	57049
9.0	160	240	240	57050
13.0	235	240	240	57051
Lid for series 1				57052

Capacity (litres)	Height (mm)	Width (mm)	Length (mm)	Item no.
1.5	75	155	155	57053
3.5	160	155	155	57054
5.0	235	155	155	57055
Lid for series 2				57056

Capacity (litres)	Height (mm)	Width (mm)	Length (mm)	Item no.
0.5	55	105	155	57057
1.0	75	105	155	57058
2.5	160	105	155	57059
Lid for series 3				57060

## TRANSPORT CONTAINER, INSULATED

- Material ■ AISI 304, brushed satin finish
- Design ■ Double walled
- With carry handle
- Lid with silicone seal and three clamp fasteners



Capacity (litres)	Diameter (mm)	Height (mm)	Thickness (mm)	Item no.
10	320	170	0.8	70610
20	320	310	0.8	70620
30	320	510	0.8	70630



### CONTAINER, SEALABLE

- Material ■ AISI 316 L
- Design ■ Heavy-duty quality
- Complete with lid, silicone seal, and screw clamping ring
- Seamlessly welded
- ideal for powders and liquids



Capacity (litres)	Filler opening ø (mm)	Container ø (mm)	Height (mm)	Item no.
0.5	50	83	148	80670
1	50	102	178	80680
1	100	104	152	80690
2	100	104	227	80710
5	100	164	316	80720
8	100	215	283	80730
10	100	215	364	80740
20	100	275	440	80755



### PHARMACEUTICAL CONTAINER

- Material ■ AISI 316 L
- Design ■ Robust, heavy-duty quality
- Complete with lid and FDA-compliant silicone seal
- Seamlessly welded
- ideal for powders and liquids

Capacity (litres)	Filler opening ø (mm)	Height (mm)	Item no.
0.5	48	154	80870
1	48	178	80871



## MOISTENER

- Material ■ AISI 316 Ti
- Design ■ Can made of high-quality, durable stainless steel, wall thickness 0.6 mm
- For safely moistening, sprinkling, or soaking parts, cloths, or paper
- Integrated pump mechanism, surplus liquid runs back into the container
- Spring-mounted soaking tray
- Flame arrester in the soaking tray
- Also available with polished vessel and aluminium handle (please enquire)



Capacity (litres)	Height (mm)	Diameter (mm)	Weight (g)	Item no. for AISI 316 Ti
1.0	270	120	857	86480
2.0	330	131	1,003	86490

## TRANSPORT BOX

- Material ■ AISI 304, matt-finished surface
- Design ■ Material thickness 1.5 mm
- Fully welded, bottom edges and corners rounded, folded rim
- Large folding handles on the narrow sides with plastic cover
- Incl. hinged lid, clamp fasteners, and retaining straps for lid
- Holding bracket on the lid for logbook
- Bottom of transport box with 2 polyamide strips



Exterior dimensions (L x W x H) in mm	Interior dimensions (L x W x H) in mm	Capacity (litres)	Item no.
400 x 300 x 340	350 x 250 x 310	27	86321
600 x 400 x 250	550 x 350 x 220	42	86322
600 x 400 x 410	550 x 350 x 380	73	86323
800 x 400 x 340	750 x 350 x 310	81	86324
800 x 600 x 410	750 x 550 x 380	157	86325
1,200 x 800 x 510	1,150 x 750 x 480	414	86326



### UNIVERSAL/LAB DISH, FLAT

- Material ■ AISI 304
- Design ■ Flat, tapered shape  
■ Polished satin finish  
■ Medium-weight design  
■ With open, smooth rim



Capacity (litres)	Top diameter (mm)	Bottom diameter (mm)	Height (mm)	Item no.
0.5	140	95	55	57039
0.75	150	95	75	57040
1.0	160	115	75	57041
2.0	220	160	75	57042
3.0	240	160	95	57043
4.5	260	180	120	57044
6.0	300	215	120	57045
8.0	320	210	140	57046
11.0	380	285	130	57047
14.0	400	285	155	57048

### UNIVERSAL/LAB DISH, DEEP

- Material ■ AISI 304
- Design ■ Deep, tapered shape  
■ Polished satin finish  
■ Medium-weight design  
■ With open, smooth rim



Capacity (litres)	Top diameter (mm)	Bottom diameter (mm)	Height (mm)	Item no.
0.5	120	75	70	57077
0.75	150	95	75	57078
1.0	150	95	80	57079
1.5	180	115	95	57080
2.0	195	115	115	57081
3.0	220	140	125	57082
4.0	245	155	135	57083
5.0	265	180	130	57084
6.0	285	195	145	57085
8.0	310	200	165	57086
9.0	310	195	180	57087
11.0	355	215	180	57088
14.0	375	215	200	57089



## BOWLS, ACID-RESISTANT

- Material
- AISI 316 L, low-ferrite stainless steel
- Design
- Electro-polished
  - Flat, tapered shape
  - Surface: finely polished, RA value: 0.6 µm
  - Tapered bowls with rim
  - Wide range of different sizes and diameters
  - Ideal for lab use in the pharmaceutical, chemical, cosmetics, and food industries
  - Inspection certificate (WAZ 3.1b) available upon request
  - Stackable, space-saving
  - Cleaning: easy to handle



Capacity (litres)	Top diameter (mm)	Bottom diameter (mm)	Height (mm)	Item no.
0.25	95	60	60	58020-S
0.75	165	120	80	58030
1.0	190	120	80	58040
1.5	200	125	95	58050
2.0	220	130	105	58060
3.0	250	135	110	58070
5.0	270	140	140	58080





### MEASURING BUCKET WITH SPOUT

- Material ■ AISI 304
- Design ■ Extra heavy-duty quality  
■ Litre graduations on inside  
■ With handle and spout  
■ Please order lid separately

Capacity (litres)	ø (mm)	Height (mm)	Container item no.	Lid item no.
10	240	260	70110	70210
15	270	300	70115	70215
20	270	400	70120	70220

### MEASURING JUG, CYLINDRICAL

- Material ■ AISI 304/AISI 316 L
- Design ■ High-gloss finish  
■ With pouring spout  
■ Fig. 1: graduated inside and out, measurements on inside  
■ Fig. 2: graduated on inside



1



2

Material AISI 304

Fig.	Capacity (litres)	ø (mm)	Height (mm)	Item no.
1	0.7	100	100	80380
1	1.3	120	120	80381
1	2.1	140	140	80382
1	3.2	160	160	80383
1	4.0	180	180	80384
1	5.0	200	200	80389
2	0.5	Not specified	130	80385
2	1.0	Not specified	150	80386
2	1.5	Not specified	160	80387
2	2.0	Not specified	170	80388

Material AISI 316 L

Fig.	Capacity (litres)	ø (mm)	Height (mm)	Item no.
2	0.5	75	135	80391
2	1.0	100	135	80392
2	2.0	135	170	80393

### BUCKET WITH BASE RING

- Material ■ AISI 304, high-gloss finish
- Design ■ With seamless handle recesses  
■ Graduated on one side in 1 litre increments



Capacity (litres)	ø (mm)	Height (mm)	Bucket item no.	Lid item no.
10	300	265	72910	71910
12	310	290	72912	71912
15	325	330	72915	71915





## BUCKET WITHOUT BASE RING

- Material ■ AISI 304, high-gloss finish
- Design ■ With seamless handle recesses
- Graduated from 10 litre on one side in 1 litre increments

Capacity (litres)	ø (mm)	Height (mm)	Bucket item no.	Lid item no.
7	255	240	70907	71907
10	300	250	70910	71910
12	310	270	70912	71912
15	325	310	70915	71915



## BUCKET WITH BASE RING AND POURING SPOUT

- Material ■ AISI 304, matt brushed finish
- Design ■ Flanged rim
- Base ring with drain holes
- Graduated on one side in 1 litre increments
- No lid is available for these buckets

Capacity (litres)	ø (mm)	Height (mm)	Item no.
10	260	290	74910
12	275	320	74912

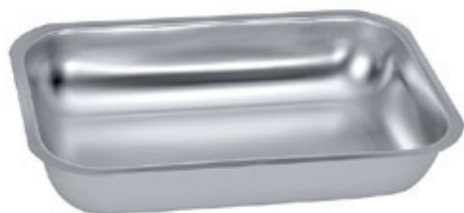


## MIXING BASIN

- Material ■ AISI 304, extra heavy-duty quality
- Design ■ With closed base
- No corners

Capacity (litres)	Inner diameter (mm)	Height (mm)	Item no.
10	265	200	72100
16	300	250	72110
20	315	300	72120
25	355	285	72130
32	355	355	72140
40	400	355	72150
50	400	435	72160





### MIXING TRAY

- Material ■ AISI 304, polished satin finish, smooth
- Design ■ Tapering rim, large corner radius
- Medium-weight quality

Length (mm)	Width (mm)	Height (mm)	Capacity (litres)	Item
190	120	40	0.6	57074
240	170	40	1.2	57075
300	205	55	2.0	57076



### SORTING TRAY

- Material ■ AISI 304, high-gloss finish
- Design ■ With narrow, folded-over rim
- Medium-weight quality

Length (mm)	Width (mm)	Height (mm)	Capacity (litres)	Item
260	200	45	1.8	57069
310	245	50	3.0	57070
360	275	50	4.0	57071



1



2

### CARRYING TRAY

- Material ■ AISI 304, polished satin finish
- Design ■ Fig. 1: steep walls, with narrow, smoothly tapering rim
- Both trays have rounded corners
- Heavy-duty quality

Figure	Length	Width (mm)	Height (mm)	Capacity (litres)	Item
1	315	215	65	3.0	57072
2	260	180	25	1.0	57073



### COLLECTING PAN

- Material ■ AISI 304, matt polished
- Design ■ With open, flanged rim
- Deep drawn
- With rounded edges

Capacity (litres)	Length (mm)	Width (mm)	Height (mm)	Item no.
4	350	250	50	70061
6	450	300	50	70062
8	550	350	50	70063
11	650	400	50	70064



## UTENSILS

- Material**
- Free choice of material: AISI 304, AISI 316, AISI 316 Ti, and AISI 316 L
- Design**
- According to GMP guidelines, complies with FDA requirements
  - Resistant to acid
  - Easy to clean
  - Electro-polished design
  - No risk of corrosion



Fig.	Length (mm)	ø (mm)	Item no.
1 – Large spoon	285	70	57113
2 – Double-ended spoon	300	20/30	57114
3 – Small spoon, long	250	36	57115
4 – U-shaped scoop	175	40/12/5	57116
5 – Medium spoon	180	45	57117
6 – Small spoon, short	135	36	57118
7 – Scoop/spoon	135	20/11	57119

## SPOONS

- Material**
- AISI 304/AISI 316
- Design**
- Available in various sizes and materials
  - High-gloss polished



### Material AISI 304

Capacity (ml)	Total length (mm)	Item no.
2	155	80830
10	210	80835
2	300	80840
10	305	80845
10	500	80850

### Material AISI 316

Capacity (ml)	Total length (mm)	Item no.
10	300	80855
10	600	80860
10	1,000	80865



## BOWLS AND LADLES

Material

■ AISI 304

Design

■ Fig. 1: flat tapered shape, graduated on inside

■ Fig. 2: flattened base, pouring rim, graduated

■ Fig. 3: matt polished, seamless, with vol. indications

Fig.	Capacity (litres)	Diameter (mm)	Height (mm)	Handle length (mm)	Item no.
1	1.5	190, internal	85	-	81310
1	3.0	240, internal	110	-	81320
1	5.0	280, internal	125	-	81330
2	1.0	150	85	190	81200
3	0.06	60	-	230	81101
3	0.08	70	-	290	81102
3	0.2	90	-	330	81104
3	0.5	120	-	400	81107
3	1.0	160	-	450	81109
3	2.0	200	-	425	81111



## LADLE

Material

■ AISI 304, matt polished

Design

■ Measurements stamped on handle (ø and volume)

■ Heavy-duty quality, seamless

Capacity (litres)	Diameter (mm)	Handle length (mm)	Item no.
0.03	50	300	57099
0.06	60	300	57100
0.08	70	320	57101
0.125	80	340	57102
0.2	90	360	57103
0.25	100	380	57104
0.33	110	420	57105
0.5	120	420	57106
0.75	140	430	57107
1.0	160	470	57108
1.5	180	490	57109
2.0	200	550	57110



## MICRO SCOOPS

- Material ■ AISI 304/AISI 316
- Design ■ Available in various sizes and materials
- Seamless
- Gloss polished



Fig.	Blade width x Blade length (mm)	Total length (mm)	Material	Item no.
1	9 x 50	210	AISI 304	80875
1	5 x 45	210	AISI 304	80880
1	2.5 x 35	150	AISI 304	80890
2	12 x 40	175	AISI 304	80895
2	12 x 40	175	AISI 316	80905

## LADLES FOR LIQUIDS

- Material ■ AISI 316
- Design ■ Seamless construction



Capacity (ml)	Diameter (mm)	Total length (mm)	Item no.
100	39	1,000	80910
250	64	1,000	80915
500	90	1,000	80920
100	39	600	80925
250	64	600	80935
500	90	600	80940



## MULTI-PURPOSE SCOOPS, SEAMLESS

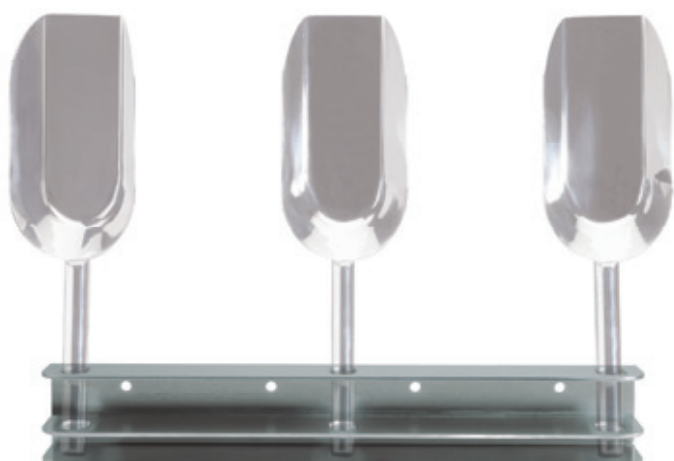
- Material ■ AISI 316, high-gloss polished
- Design ■ Seamless join between scoop and handle  
 ■ Handle attached with a 20° upwards angle  
 ■ According to GMP guidelines  
 ■ Fig. 1: round-bottomed scoop  
 ■ Fig. 2: straight-bottomed scoop



Capacity (litres)	Total length (mm)	Scoop width (mm)	Scoop height (mm)	Approx. weight (g)	Fig. 1 item no.	Fig. 2 item no.
0.25	305	80	35	300	80625	820625
0.5	335	100	45	410	80650	820650
1.0	375	130	60	570	806100	8206100
1.5	410	145	65	730	806150	—
2.0	420	160	75	870	806200	—
2.5	455	180	85	890	806250	—

## SCOOP HOLDER

- Material ■ AISI 304, polished satin finish
- Design ■ Medium-weight quality  
 ■ For wall mounting



Number of scoops	Length (mm)	Item no.
3	470	806991
4	680	806992
5	890	806993

Also available with more scoop holders on request.



## SACK SCOOP

- Material ■ AISI 316 , polished
- Design ■ Heavy-duty  
 ■ Rounded corners for easy cleaning  
 ■ Hygienic, seamless construction  
 ■ According to GMP guidelines  
 ■ Handle bent in upwards direction, parallel to the scoop



Capacity (litres)	Width (mm)	Total length (mm)	Overall height (mm)	Item no.
1.5	165	300	150	810660

## SACK SCOOP, SEAMLESS

- Material ■ AISI 316 , high-gloss polished
- Design ■ Seamless join between scoop and handle  
 ■ Handle bent over the scoop at a 125° angle  
 ■ Handle with thumb grip  
 ■ According to GMP guidelines



Capacity (litres)	Scoop length (mm)	Scoop width (mm)	Scoop height (mm)	Total length x Total height (mm)	Approx. weight (g)	Item no.
0.5	200	110	60	245 x 190	500	810650
1.0	240	140	70	300 x 240	800	8106100
1.5	260	160	80	310 x 230	910	8106150
2.0	270	180	110	350 x 270	1,110	8106200

## PHARMACEUTICAL SCOOPS

- Material ■ AISI 304
- Design ■ Lightweight  
 ■ Seamless



Capacity (litres)	Width (mm)	Scoop length (mm)	Total length (mm)	Item no.
0.1	60	—	180	810640
0.2	75	—	245	810645
0.3	90	—	230	810670
0.5	75	135	205	810680





## PHARMACEUTICAL SCOOP, TYPE I

- Material ■ AISI 316 L, polished
- Design ■ Enclosed, high-quality design
- Rounded corners for easy cleaning
- Seamless join between scoop and handle
- According to GMP guidelines



Capacity (litres)	Diameter (mm)	Scoop length (mm)	Total length (mm)	Item no.
0.01	25	45	75	80400
0.05	38	70	110	80410
0.1	50	100	180	80420
0.25	75	120	235	80430
0.5	95	140	240	80440
0.75	95	210	330	80450
1.0	110	235	340	80460
1.25	125	195	305	80470
1.7	135	230	355	80480
2.5	185	215	320	80490
5.0	220	225	355	80495

## PHARMACEUTICAL SCOOP, TYPE II

- Material ■ AISI 316 L, polished
- Design ■ Open, heavy-duty design
- Rounded corners for easy cleaning
- Seamless
- According to GMP guidelines



Capacity (litres)	Width (mm)	Scoop length (mm)	Total length (mm)	Item no.
0.25	100	150	270	80500
0.5	125	190	320	80510
0.75	110	235	350	80520
1.0	125	235	360	80530
1.5	135	300	420	80540
2.0	145	310	430	80550
4.0	185	275	400	80560



## WEIGHING SCOOP

- Material
- AISI 316 L, polished
- Design
- Freestanding scoop
  - Rounded corners
  - Hygienic, seamless construction



Capacity (litres)	Width (mm)	Scoop length (mm)	Total length (mm)	Item no.
0.5	110	205	320	80390

## LONG-HANDLE SCOOP

- Material
- AISI 316, polished
- Design
- Seamless
  - With rounded corners for easy cleaning
  - According to GMP guidelines



Capacity (litres)	Width (mm)	Length (mm)	Handle length (mm)	Item no.
1.0	110	235	600	74960



### SCOOP

- Material ■ AISI 304, high-gloss finish  
Design ■ Seamless

Scoop dimensions (mm)	Length (mm)	Item no.
120 x 125	480	57111



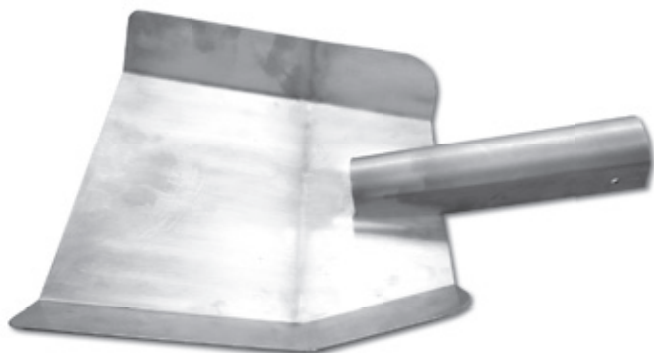
### SQUARE SCOOP

- Material ■ AISI 316 L  
Design ■ Heavy-duty  
■ Polished  
■ With rounded corners for easy cleaning  
■ According to GMP guidelines

Capacity (litres)	Width (mm)	Length (mm)	Total length (mm)	Item no.
1.5	160	190	315	74971

### SCOOP, SIZE 2

- Material ■ AISI 304/AISI 316 Ti  
Design ■ Material thickness 1.5 mm  
■ With handle adapter, ø 30 mm



Material	Dimensions (L x W) in mm	Scoop height (mm)	Item no.
AISI 304	244 x 272	35	74972
AISI 316 Ti	244 x 272	35	74973



## STIRRING SPATULA

- Material ■ AISI 316 , polished
- Design ■ Heavy-duty  
 ■ Seamless construction  
 ■ Also available in perforated design



Spatula dimensions (L x W) in mm	Total length (mm)	Unperforated design item no.	Perforated design item no.
240 x 125	1,000	74980	74981
300 x 150	1,500	74990	74991

## STIRRING SPATULA

- Material ■ AISI 304, polished
- Design ■ Handle thickness 25 mm  
 ■ Material thickness of spatula 20 mm



Spatula dimensions (L x W) in mm	Total length (mm)	Item no.
230 x 120	610	75100
230 x 120	1,050	75110
230 x 120	1,200	75120
230 x 120	1,500	75130



## ROUND SIEVE



**2605**



**2604**



**2606**



**2607**

Material

Design

range, special

- AISI 304, high-gloss finish
- Polished with perforated mesh material
- Filling height 50 mm, with high bottom clearance
- Overall height: 100 mm
- Heavy-duty quality
- Other sizes available upon request

Mesh	Diameter (mm)	Item no.
Fine (hole dimension: 1 x 1 mm) 2605	250	57090
	300	57091
	350	57092
Medium-fine (hole dimension: 1 x 2.5 mm) 2604	300	57093
	350	57094
Coarse (hole dimension: 3 x 3 mm) 2606	250	57095
	300	57096
Extra coarse (hole dimension: 9 x 7 mm) 2607	300	57097
	350	57098

## FINE SIEVE



Material

Design

- AISI 304, matt polished
- Medium-weight
- With fine-threaded wire mesh
- No bottom clearance
- Mesh size 1.0 x 1.0 mm

Diameter (mm)	Height (mm)	Item no.
220	65	83100
255	70	83110
300	75	83120
400	80	83130



## LAB SIEVE

- Material ■ AISI 304, high-gloss stainless steel or with brass frame
- Design ■ Polished with perforated mesh material
- Fill level 50 mm, with bottom clearance
- Diameter: 200 mm
- Other sizes available upon request



All stainless steel		Brass frame / remainder in stainless steel	
Mesh size	Item no.	Mesh size	Item no.
4 mm	80600	4 mm	80620
2 mm	80601	2 mm	80621
1 mm	80602	1 mm	80622
850 µm	80603	850 µm	80623
710 µm	80604	750 µm	80624
600 µm	80605	600 µm	80625
500 µm	80606	500 µm	80626
425 µm	80607	425 µm	80627
300 µm	80608	300 µm	80628
250 µm	80609	250 µm	80629
180 µm	80610	180 µm	80630
150 µm	80611	150 µm	80631
125 µm	80612	125 µm	80632
106 µm	80613	106 µm	80633
90 µm	80614	90 µm	80634
75 µm	80615	75 µm	80635
53 µm	80616	53 µm	80636
32 µm	80617	32 µm	80637
25 µm	80618	25 µm	80638
20 µm	80619	20 µm	80639





## PRODUCTION STAINLESS STEEL SAMPLE TAKERS

### SAMPLE TAKERS

- Material ■ AISI 316 L
- Design ■ Ideal for taking a larger volume from various containers
- Robust stainless steel construction
- Used for powders and pellets



Max. capacity (ml)	Material	Bottle holder	Length (mm)	Outer diameter (mm)	Number of sample chambers	Item no.
45	AISI 316 L	No	300	25	3	80640
110	AISI 316 L	No	600	25	3	80641
190	AISI 316 L	No	1,000	25	4	80642
300	AISI 316 L	No	1,500	25	5	80643
370	AISI 316 L	No	2,000	25	5	80644
110	AISI 316 L	Yes	600	25	3	80645
190	AISI 316 L	Yes	1,000	25	4	80646
300	AISI 316 L	Yes	1,500	25	5	80647
750	AISI 316 L	No	1,000	40	3	80648
1,000	AISI 316 L	No	1,500	40	4	80649
1,300	AISI 316 L	No	2,000	40	4	80651
880	Aluminium	No	900	50	3	80652
1,700	Aluminium	No	1,500	50	5	80653
2,900	Aluminium	No	2,500	50	7	80654

### SAMPLE TAKING CONTAINER

- Material ■ HDPE
- Design ■ For directly emptying into a bottle
- Non-slip holder
- Available as a 250 ml and 500 ml unit



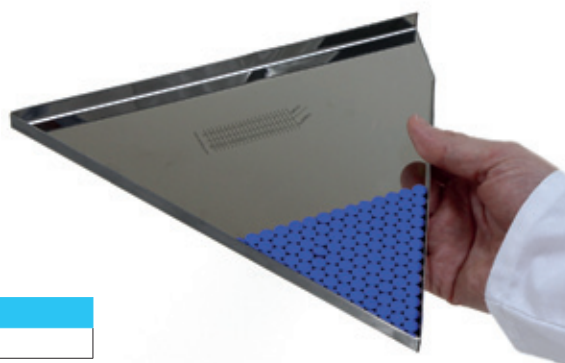
Size (ml)	Item no.
250	80655
500	80656





## TRIANGULAR TABLET COUNTER

- Material ■ AISI 316
- Design ■ Ideal for round tablets of all sizes
- Simple and straightforward to determine the amount



Side length (mm)	Item no.
275	80660

## GMP KNIVES

- Material ■ AISI 304, polished
- Design ■ Seamless construction
- According to GMP guidelines



Blade length x Blade width (mm)	Total length (mm)	Item no.
100 x 25	185	80950
130 x 20	225	80955
150 x 25	255	80960
200 x 32	325	80965
250 x 38	380	80970
300 x 45	440	80975
350 x 50	495	80980



THERE IS NOTHING  
THAT DOES NOT  
EXIST. THE SAME  
GOES FOR OUR  
PRODUCT RANGE



**STORAGE**



## STORAGE

### STAINLESS STEEL PALLET RACKS

#### PALLET RACK

- Material
- Design
- AISI 304 (V2A), also available in AISI 316 Ti (V4A) upon request
  - Surface spray pickled or electro-polished
  - U-profile frame, support beam is a hollow box profile
  - Support beam height-adjustable with a pitch of 100 mm for pallets
  - Support frame ready-welded for installation
  - Trestle shelves are supplied with a diagonal cross
  - They come with fasteners and a stainless steel base expansion anchor
  - Other dimensions available upon request.



#### FRAME UPRIGHT

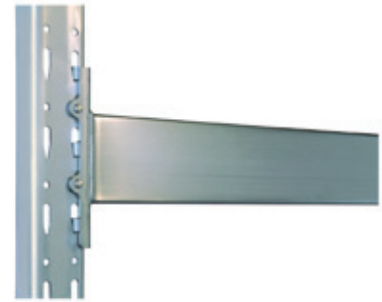
- Design
- 80 x 50 x 3 mm U-profile frame
  - Surface spray pickled
  - Max. upright load 11,000 kg
  - Ready-welded for installation

Frame depth (mm)	Frame height in mm						
	1,800	2,000	2,500	3,000	3,500	4,000	4,500
800	54010	54020	54030	54040	54050	54060	—
1,100	54070	54080	54090	54100	54110	54120	54121



## SUPPORT BEAM

- Design
- Surface spray pickled
  - Including fasteners



Bay width (mm)	1,800		2,700				3,600			
Profile (mm)	80/40 x 2	100/40 x 2	80/40 x 2	100/40 x 2	120/40 x 3	150/50 x 3	100/40 x 2	100/40 x 3	120/40 x 3	150/50 x 3
Loading capacity for each pair of beams (kg)	3,000	4,490	1,740	2,420	3,280	4,490	1,500	2,500	3,000	3,700
Item no.	52342	52361	52311	52331	52340	52362	52312	52332	52341	52363

## PUSH-THROUGH GUARD

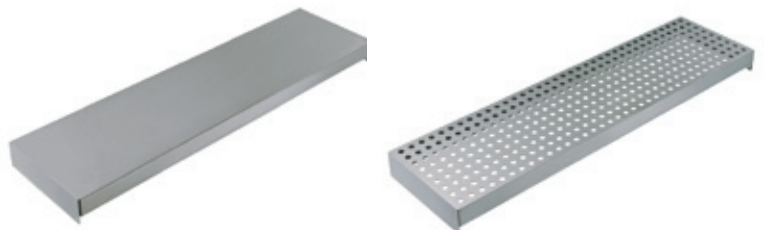
- Design
- Spacer for maintaining 50 mm from the shelf
  - Surface spray pickled
  - Including fasteners



Bay width (mm)	Item no.
1,800	52410
2,700	52420
3,600	52430

## SHELF COVERS

- Design
- C-shaped, edged panels
  - Made of stainless steel sheets
  - 300 mm wide, 52 mm high
  - Loading capacity per panel up to 300 kg (even load distribution)



Shelf depth (mm)	Closed item no.	Perforated item no.
800	52510	52511
1,100	52520	52521

## DIAGONAL CROSS



Bay width (mm) (up to 3,000 mm high)	Item no.
1,800	52450
2,700	52470
3,300	52475
3,600	52490

## BUMPER

- Design
- Made from stainless steel
  - Leg length 150 x 150 mm



Design	Height (mm)	Item no.
L-shape	400	51245
U-shape	400	51246



## LONG-SPAN SHELVING

- Material
- AISI 304, spray pickled
- Design
- Upright made of sheet metal angles, 1.5 mm thick
  - 30 x 30 x 1.5 mm tube, welded
  - Support frame ready-welded for installation
  - 200 mm wide panels (= same manufacturing process used for all shelf widths)
  - Height adjustment: 100 mm



## SHELVING UPRIGHT

Dimensions (H x D) in mm	Loading capacity (kg)	Item no.
1,500 x 600	3,000	52600
1,500 x 800	3,000	52610
1,500 x 1,100	3,000	52620
2,000 x 600	3,000	52630
2,000 x 800	3,000	52640
2,000 x 1,100	3,000	52650
2,500 x 600	3,000	52660
2,500 x 800	3,000	52670
2,500 x 1,100	3,000	52680





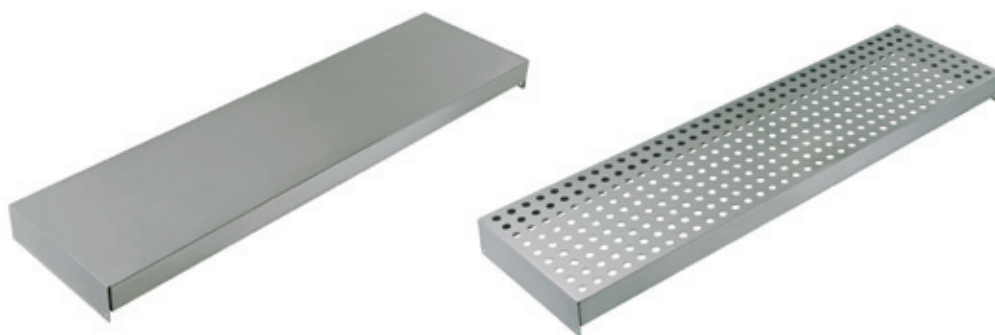
## SHELF SUPPORT (INCL. LOCKING PINS)

- Material ■ AISI 304, spray pickled
- Design ■ Hook-in claws and support profile welded flush at top, claw thickness 3.0 mm

Bay width (mm)	Dimensions (mm)	Loading capacity (kg)	Item no.
1,800	60/30 x 2	750	52700
2,600	60/30 x 2	500	52710
3,600	60/30 x 2	200	52720

## SUPPORTING PANELS

- Material ■ AISI 304, spray pickled
- Design ■ Panel width 600 mm



Design	(D x W x H) in mm	Loading capacity (kg)	Item no.
Perforated	600 x 200 x 50	40	52730
Perforated	800 x 200 x 50	40	52740
Perforated	1,100 x 200 x 50	40	52750
Unperforated	600 x 200 x 50	40	52760
Unperforated	800 x 200 x 50	40	52770
Unperforated	1,100 x 200 x 50	40	52780



Stainless steel long-span shelf unit with stainless steel grid shelves and stainless steel collection pans



## STORAGE

### WALL-MOUNTED STAINLESS STEEL SHELVING

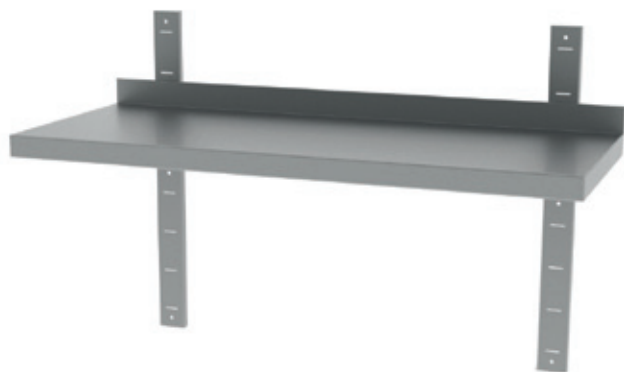


#### SINGLE WALL-MOUNTED SHELF

- Material ■ AISI 304
- Design ■ With 2 welded-on sheet metal brackets
- Shelf with folded-up edge at rear
- Loading capacity approx. 40 kg/running metre

Length (mm)	Depth (mm)	Item no.
500	300	37010
600	300	37020
700	300	37030
800	300	37040
900	300	37050
1,000	300	37060
1,100	300	37070
1,200	300	37080
1,300	300	37090
1,400	300	37100
1,500	300	37110
1,600	300	37120
1,700	300	37130
1,800	300	37140
1,900	300	37150
2,000	300	37160

Length (mm)	Depth (mm)	Item no.
500	400	37200
600	400	37210
700	400	37220
800	400	37230
900	400	37240
1,000	400	37250
1,100	400	37260
1,200	400	37270
1,300	400	37280
1,400	400	37290
1,500	400	37300
1,600	400	37310
1,700	400	37320
1,800	400	37330
1,900	400	37340
2,000	400	37350



#### WALL-MOUNTED SHELVING WITH 1 ADJUSTABLE SHELF

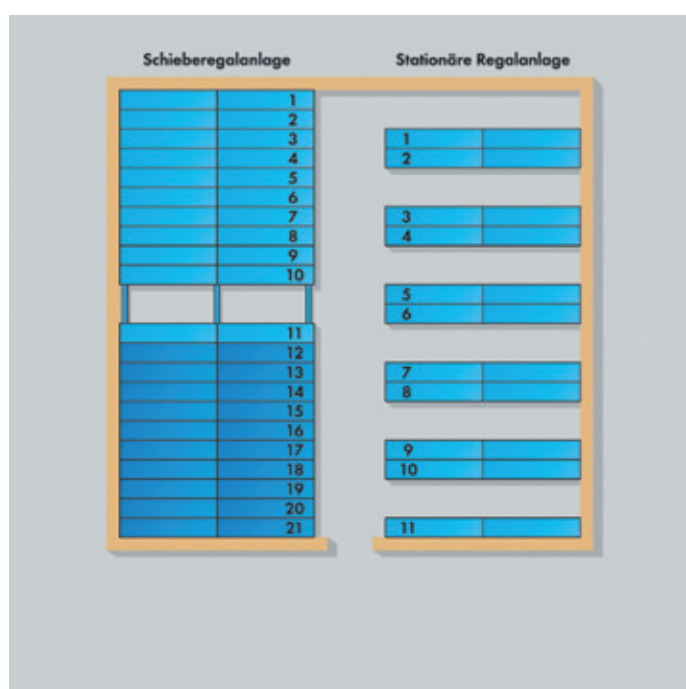
- Material ■ AISI 304
- Design ■ With 2 slotted rails, length 640 mm for wall mounting and adjustable brackets
- Comes with 3 slotted rails at length over 1,500 mm
- Shelf with folded-up edge at rear
- Loading capacity approx. 40 kg/running metre

Length (mm)	Depth (mm)	Item no.
500	300	37500
600	300	37510
700	300	37520
800	300	37530
900	300	37540
1,000	300	37550
1,100	300	37560
1,200	300	37570
1,300	300	37580
1,400	300	37590
1,500	300	37600
1,600	300	37610
1,700	300	37620
1,800	300	37630
1,900	300	37640
2,000	300	37650

Length (mm)	Depth (mm)	Item no.
500	400	37700
600	400	37710
700	400	37720
800	400	37730
900	400	37740
1,000	400	37750
1,100	400	37760
1,200	400	37770
1,300	400	37780
1,400	400	37790
1,500	400	37800
1,600	400	37810
1,700	400	37820
1,800	400	37830
1,900	400	37840
2,000	400	37850



## STAINLESS STEEL SLIDING SHELVING SYSTEM



Optimise use of the available storage space and increase usage up to 100%. Compared to conventional shelving systems, this avoids superfluous walkways between the shelves and converts them into storage space.

No additional costs incurred due to time-consuming floor work, the rails are bolted to the existing floor.

The floor rails, running wheels, and universal cross-struts are made from stainless steel grade AISI 304. The end stop consists of a shockproof and very hard-wearing plastic material.

The length of the floor rails is determined by the customer.

Available design options and prices are available on a case-by-case basis, upon request.



## STORAGE STAINLESS STEEL BASKETS

### WIRE BASKET

- Material ■ AISI 304, electro-polished  
Design ■ Mesh size 8.0 x 8.0 mm



1



2

Height (mm)	Length (mm)	Width (mm)	Fig. 1 item no.	Fig. 2 item no.
100	100	100	84100	—
120	120	120	84111	—
140	140	140	84130	—
160	160	160	84140	—
180	180	180	84150	—
200	200	200	84160	—
200	300	200	84170	—
200	400	200	84180	—
200	400	300	—	84190



### GOODS BASKET

- Material ■ AISI 304, electro-polished  
Design ■ Stacking edge made from angled profile (H x W) mm 1.2 x 1.9  
■ Bottom frame made of rounded material, Ø 8.0 mm  
■ Bottom wire Ø 3.0 mm  
■ Mesh size 11.0 x 11.0 mm  
■ Folding handles on the ends

Height (mm)	Length (mm)	Width (mm)	Item no.
200	470	300	84191





## BASKET

- Material ■ AISI 304, electro-polished
- Design ■ Wire mesh with supporting frame  
■ Mesh size 2.0 x 2.0 mm  
■ Wire ø 1.0 mm



Height (mm)	Length (mm)	Width (mm)	Item no.
70	420	270	84193

## ROUND BASKET

- Material ■ AISI 304, electro-polished
- Design ■ With folding carry handle  
■ Mesh size 8.0 x 8.0 mm  
■ Wire ø 1.0 mm



Height (mm)	Diameter (mm)	Item no.
220	300	84194

## WASHING BASKET WITH LID

- Material ■ AISI 304, electro-polished
- Design ■ For holding instruments, optics, and accessories of varying sizes  
■ Mesh size in mm: 1.6 x 1.6 mm



Dimensions (W x D x H) in mm	Item no.
215 x 140 x 54	100569
274 x 174 x 36	100570-S

## SIEVE TRAY

- Material ■ AISI 304, electro-polished
- Design ■ With inboard handles  
■ Mesh size 5.0 x 5.0 mm  
■ Wire ø 1.0 mm



Height (mm)	Length (mm)	Width (mm)	Item no.
50	250	240	84195



### SLIDE-IN STERILE GOODS BASKET ACC. TO ISO STANDARD

- Material ■ AISI 304, electro-polished  
Design ■ Stackable on and inside one-another



Dimensions (W x D x H) in mm	Item no.
600 x 400 x 100	100579
600 x 400 x 130	100580
600 x 400 x 150	100581
600 x 400 x 180	100582

### STERILE GOODS BASKET

- Material ■ AISI 304  
Design ■ Stackable  
■ With handle opening



Dimensions (W x D x H) in mm	Item no.
600 x 300 x 300	100568

### WIRE BASKET

- Material ■ AISI 304, electro-polished  
Design ■ Handle recesses on end  
■ Reinforced stacking ring on the bottom  
■ Mesh size for bottom: 20 x 20 mm  
■ Wire ø: 2.5 mm



Height (mm)	Length (mm)	Width (mm)	Usable height (mm)	Item no.
80	420	300	70	84192

### TEST TUBE RACK

- Material ■ AISI 304, electro-polished  
Design ■ 4 x 12 divisions



Tube ø (mm)	Height (mm)	Length (mm)	Width (mm)	Item no.
17	70	250	90	84196
13	40	200	80	84197
25	70	350	120	84198





## COLLECTING TROUGH

- Material ■ AISI 316 Ti
- Design ■ Storage of barrels containing aggressive media  
 ■ Approved for combustible liquids with classification F/F+  
 ■ Material thickness 2.0 mm  
 ■ Ground clearance 100.0 mm  
 ■ Available with or without grid



Capacity (litres)	Max. no. of drums (200 l capacity)	Dimensions (L x W x H) in mm	Weight (kg)	No grid item no.	With grid item no.
200	1 unit	800 x 800 x 460	45	19300-B	19301-B
200	2 units	1,200 x 800 x 350	55	19310-B	19302-B
200	4 units	1,200 x 1,200 x 285	66	19320-B	19303-B
200	4 units	2,400 x 800 x 250	91	19330-B	19304-B

## TIPPING CONTAINER

- Material ■ AISI 304
- Design ■ Tip from any height via cable winch from the lift truck seat  
 ■ Sheet metal material for container with all-round edge profile  
 ■ Stable base frame with fork pockets  
 ■ Safeguard to prevent sliding off or tipping accidentally

Approx. capacity (m³)	Dimensions (L x W x H) in mm	Loading capacity (kg)	Item no.
0.3	1,440 x 680 x 580	750	19400
0.5	1,440 x 780 x 680	1,000	19410
0.75	1,440 x 1,280 x 680	1,000	19420
1.0	1,640 x 1,280 x 780	1,500	19430
1.5	1,640 x 1,280 x 1,090	1,500	19440



## SILO CONTAINER

- Material ■ AISI 304
- Design ■ Metered emptying of fine-grained bulk materials  
 ■ With slide closure and special seal on the hopper base, hand-operated  
 ■ Opening approx. 300 x 300 mm  
 ■ Frame made from profile steel  
 ■ With crane eyes  
 ■ With lift truck pockets, 175 x 65 mm

Approx. capacity (m³)	Dimensions (L x W x H) in mm	Hopper dimensions (L x W x H) in mm	Item no.
375	1,090 x 860 x 1,170	1,010 x 780 x 1,000	19500
600	1,090 x 860 x 1,550	1,010 x 780 x 1,380	19510
Accessories			Item no.
2 castors and 2 fixed rollers made from polyamide ø 180 mm, 1 castor with a brake, installed height 220 mm, with push handle			19520





## HYGIENE FENCE® – THE STAINLESS STEEL FENCE FOR HYGIENE AND SAFETY

HYGIENE FENCE® – the innovative and forward-looking fencing system, which meets the most stringent statutory hygiene, safety, and quality requirements for the food industry.

High-quality stainless steel ensures cleanness and durability. A hygienic design, with water and dirt-repellent construction, enables spotless cleaning.

Pickled stainless steel AISI 304 ensures increased water and corrosion-resistance. The durability, ease of care, and robust design of this protective system guarantee an economical price/performance ratio.

- **Certified hygienic**

Meets all hygiene requirements for food processing machinery according to DIN EN 1672-2:2009-07 + (EC) no. 1935/2004, certified hygienic and type-examination tested

- **Guaranteed safety**

This modular system meets all the requirements for safety guards laid out in the new EC Machinery Directive 2006/42/EC

- **Short lead times**

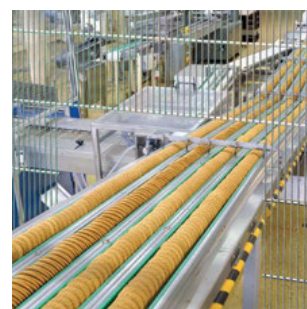
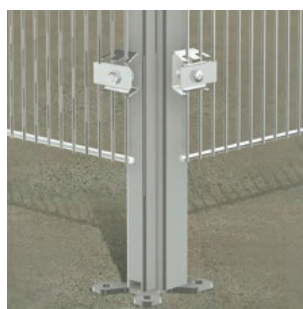
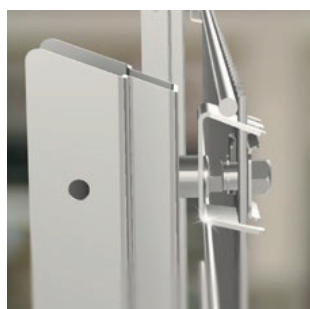
The system modules, made from high-quality, ready-pickled stainless steel, are available from stock

- **Highly flexible system**

Safety guard components with a frameless design can be adapted at any time to suit conditions at the installation location

- **EC conformity and CE**

Every delivery automatically includes the necessary EC Declaration of Conformity and CE mark





## WIRE FENCING / POSTS

- Material** ■ AISI 304, stainless steel, pickled surface finish
- Design** ■ Fencing elements:  
8 mm horizontal round wires on one side,  
4 mm vertical wires, spot welded
- Wire mesh size:  
Spacing of the horizontal wires 190 mm, standard spacing of the  
vertical wires 19 mm. This produces a mesh size of 19 x 190 mm
- Universal safety fence posts made from 60/60/2 U-profile posts with  
welded-on 120 x 100 mm footplate. Wire bracket and clamping  
element with preinstalled cap nut for self-installation.



Name	Dimensions (W x H) in mm	Item no.
Fencing element	483 x 1,808	58200
Fencing element	983 x 1,808	58210
Fencing element	1,483 x 1,808	58220
Universal post (row, middle, end)	60/60/1998	58230
Universal post (corner post, left/right)	60/60/1998	58240

## SWING DOORS

- Material** ■ AISI 304, stainless steel, pickled surface finish
- Design** ■ Door with QR 20 frame at side (20 mm square tube)
- For a single door the top component is a cross beam,  
for a double door a cross beam with door stop and  
fixed panel locking mechanism
- Standard locking mechanism: stainless steel door handle  
with magnetic lock with open design for easy cleaning
- Universal design for DIN left-hand/DIN right-hand mounting
- Optional: factory-installed safety switch



Name	Dimensions (W x H) in mm	Item no.
Single-leaf swing door, DIN left/right-hand mounting	1,165 x 2,027	58250
Double-leaf swing door	2,148 x 2,039	58260

## SLIDING DOOR, SINGLE-LEAF

- Material** ■ AISI 304, stainless steel, pickled surface finish
- Design** ■ A sturdy cross beam serves as the top component
- Standard magnetic latch: stainless steel door handle with  
magnetic lock with open design for easy cleaning
- Option to order variant for DIN left-hand/DIN right-hand  
mounting
- Optional: factory-installed safety switch



Name	Dimensions (W x H) in mm	Item no.
Single-leaf sliding door, DIN left-hand mounting	3,089 x 2,039	58270
Single-leaf sliding door, DIN right-hand mounting	3,089 x 2,039	58280



WHEN THE CUSTOM  
SOLUTIONS ARE  
COMPLEX.  
FOR US IT IS A  
CHALLENGE.



**TRANSPORT**





## WEIGHING PALLET TRUCK



### Design

- Simple design
- Robust chassis with additional reinforcement
- Multizone display
- 4 calibratable load cells, each with a weighing capacity of 1,000 kg
- Protection class IP 67, incl. tilt sensor
- Display housing with protection class IP 65
- Spray-proof, dustproof
- Easy-to-read LCD with multifunction keypad
- Manual and automatic zeroing
- Gross/net weighing, tare input
- Taring at the push of a button, cumulative memory
- Includes printer port
- Unladen weight 110 kg
- With quick-change battery cartridge 12V/1.2 Ah continuous operation approx. 60 hrs, LowBat indicator
- Incl. separate 230V/12VDC, 300 mA charger

Loading capacity (kg)	Fork length (mm)	Distance across forks (mm)	Lifting height (mm)	Steerable wheels	Fork rollers	Item no.
2,000	1,150	550	210	All-rubber	Polyurethane	15100

## PALLET SCALES



### Design

- For non-calibratable weighing
- Stainless steel load cells
- Plastic transport rollers
- Carry handle
- Display unit with protection class IP 65 in stainless steel housing
- Backlit 50 mm LCD display
- Basic functions: zero, tare, cumulative function (number of weighings and total weight)
- Powered by a 4 Ah battery (for approx. 100 hrs) or with the mains charger
- Unladen weight 40 kg

Display range (kg)	Number increment (g)	External dimensions (W x L) in mm	Internal dimensions (W x L) in mm	Item
600	100	800 x 1,200	600 x 1,100	15110
1,500	200	800 x 1,200	600 x 1,100	15120
3,000	500	800 x 1,200	600 x 1,100	15130
<b>Accessories</b>				
Stand made of stainless steel with plastic foot				15140
Stainless steel insert sheet, loading capacity up to 600 kg				15150





## WALL-MOUNTED SCALES, CALIBRATABLE

- Material
- Standard: aluminium load cell, protection class IP 65
  - Stainless steel: enclosed load cell, protection class IP 67, cleaning agent-resistant
- Design
- Fold-up stainless steel weighing platform



Design	Weighing range (kg)	Number increment (g)	Platform size (mm)	Weight (kg)	Item no.
Standard, no interface	60	20	440 x 550	64	15161
Standard, no interface	150	50	440 x 550	64	15162
Standard, w/ interface	60	20	440 x 550	68	15163
Standard, w/ interface	150	50	440 x 550	68	15164

## WALL-MOUNTED SCALES, CALIBRATABLE

- Material
- Stainless steel: enclosed load cell, protection class IP 67, cleaning agent-resistant
- Design
- Space-saving scales for wet working conditions
  - Display unit: dust and water-jet protected
  - Fold-up stainless steel weighing platform
  - Variant 1: no interface
  - Variant 2: with RS 232 interface for transferring data to a printer or for EPD



Variant	Weighing range (kg)	Number increment (g)	Platform size (mm)	Weight (kg)	Item no.
No interface	60	20	440 x 550	64	15165
No interface	150	50	440 x 550	64	15166
With interface	60	20	440 x 550	68	15167
With interface	150	50	440 x 550	68	15168



## TRANSPORT STAINLESS STEEL PALLET TRUCKS



### HIGH-QUALITY VARIANT

- Material**
  - Fork chassis made from V4A (AISI 316 L), all other parts from V2A (AISI 304) including the pump and ball bearing
- Design**
  - Fork chassis and drawbar glass-bead blasted and electro-polished
  - All profiles are available either open on both sides or fully sealed for easy cleaning
  - All of the major moving parts have grease nipples
  - For lubrication, use a USDA class H2 lubricant approved for use in the food industry
  - Also available in an Ex-protected variant on request

Loading capacity (kg)	Fork length x Fork width (mm)	Distance across forks (mm)	Lifting height (mm)	Steerable wheels	Fork rollers	Item no.
2,000	1,140 x 160	520	200	Nylon	Nylon/Single	13400
2,000	1,140 x 160	520	200	Nylon	Nylon/Tandem	13420
2,000	1,140 x 160	520	200	Polyurethane	Polyurethane/Single	13360
2,000	1,140 x 160	520	200	Polyurethane	Polyurethane/Tandem	13380
2,000	810 x 160	520	200	Nylon	Nylon/Single	13410
2,000	810 x 160	520	200	Nylon	Nylon/Tandem	13430
2,000	810 x 160	520	200	Polyurethane	Polyurethane/Single	13370
2,000	810 x 160	520	200	Polyurethane	Polyurethane/Tandem	13390



### STANDARD VARIANT

- Material**
  - All stainless steel
  - Steerable wheels made of polyamide
- Design**
  - V2A type: (material AISI 304)
  - V4A type: (material AISI 316Ti)
- Optional**
  - Polyurethane wheels
  - With integrated scales available upon request

Type	Loading capacity (kg)	Fork length (mm)	Distance across forks (mm)	Lifting height (mm)	Steerable wheels / Fork rollers	Item no.
V2A	2,500	1,150	540	205	Nylon Nylon/Tandem	13310
V4A	2,500	1,150	540	205	Nylon Nylon/Tandem	13320



## MANUAL VARIANT

- Material**
- Fork chassis made from V4A (AISI 316 L), all other parts from V2A (AISI 304) including the pump and ball bearing
- Design**
- Fork chassis and drawbar glass-bead blasted and electro-polished
  - All profiles are available either open on both sides or fully sealed for easy cleaning
  - All of the major moving parts have grease nipples
  - For lubrication, use a USDA class H2 lubricant approved for use in the food industry
  - Quick lift: 54 mm per stroke (load up to max. 200 kg)
  - Normal lift: 17 mm per stroke



Loading capacity (kg)	Fork length x Fork width (mm)	Distance across forks (mm)	Lifting height (mm)	Steerable wheels	Fork rollers	Item no.
1,000	1,140 x 163	540	800	Nylon	Nylon/Tandem	14100
1,000	1,140 x 163	540	800	Polyurethane	Polyurethane/Tandem	14101

Ex-protected variant						
1,000	1,140 x 163	540	800	1 antistatic, 1 polyurethane	Polyurethane/Tandem	14400
1,000	1,140 x 163	540	800	1 antistatic, 1 nylon	Nylon/Tandem	14401

## ELECTRO-HYDRAULIC VARIANT

- Material**
- Fork chassis made from V4A (AISI 316 L) drawbar, piston rod, bolts, nuts, washers, and pins made from V2A (AISI 304)
- Design**
- Motor painted, aluminium hydraulic pump, wheel bearing with rubber seal, stainless steel cover
  - Lifting motor 1.1 kW / 12 V
  - Lifting speed 0.05 – 0.08 m/s (with/without load)
  - Lowering speed 0.07 – 0.05 m/s (with/without load)
  - Castors lock automatically at a height of approx. 400 mm; at full height, the fork rollers are also locked
  - For lubrication, use a USDA class H2 lubricant approved for use in the food industry
  - Electronics protected from moisture by plastic spray. Not protected from water jets, just enclosed. Not suited to permanently wet and aggressive environments (e.g. bases and salts)
  - Incl. 12V/60 Ah battery and external 12V/11A charger



Loading capacity (kg)	Fork length x Fork width (mm)	Distance across forks (mm)	Lifting height (mm)	Steerable wheels	Fork rollers	Item no.
1,000	1,140 x 163	540	800	Nylon	Nylon/Tandem	14350
1,000	1,140 x 163	540	800	Polyurethane	Polyurethane/Tandem	14351



### MANUAL VARIANT

- Material**
- Fork chassis made from V4A (AISI 316 L), all other parts from V2A (AISI 304)
- Design**
- Lift cylinder and wheel holder electrolytically galvanised and yellow chromated
  - Fork chassis and drawbar glass-bead blasted and electro-polished
  - All profiles are available either open on both sides or fully sealed for easy cleaning
  - All of the major moving parts have grease nipples
  - For lubrication, use a USDA class H2 lubricant approved for use in the food industry
  - Robust construction guarantees a long service life and low maintenance costs
  - Quick lift: 54 mm per stroke (load up to max. 200 kg)
  - Normal lift: 17 mm per stroke



Loading capacity (kg)	Fork length x Fork width (mm)	Distance across forks (mm)	Lifting height (mm)	Installed height / Overall height (mm)	Steerable wheels / Fork rollers	Item no.
1,000	1,150 x 163	560	1,200	1,530 / 1,530	Nylon / Nylon	16100
1,000	1,150 x 163	560	1,400	1,730 / 1,730	Nylon / Nylon	16125
1,000	1,150 x 163	560	1,600	1,930 / 1,930	Nylon / Nylon	16150
1,000	1,150 x 163	560	2,050	1,530 / 2,490	Nylon / Nylon	16200
1,000	1,150 x 163	560	2,450	1,730 / 2,890	Nylon / Nylon	16250

Loading capacity (kg)	Fork length x Fork width (mm)	Distance across forks (mm)	Lifting height (mm)	Installed height / Overall height (mm)	Steerable wheels / Fork rollers	Item no.
1,000	1,150 x 163	560	1,200	1,530 / 1,530	Nylon / 1 antistatic	16100 EX
1,000	1,150 x 163	560	1,400	1,730 / 1,730	Nylon / 1 antistatic	16125 EX
1,000	1,150 x 163	560	1,600	1,930 / 1,930	Nylon / 1 antistatic	16150 EX
1,000	1,150 x 163	560	2,050	1,530 / 2,490	Nylon / 1 antistatic	16200 EX
1,000	1,150 x 163	560	2,450	1,730 / 2,890	Nylon / 1 antistatic	16250 EX



## ELECTRO-HYDRAULIC VARIANT

- Material** ■ Fork chassis made from V4A (AISI 316 L), all other parts from V2A (AISI 304)
- Design** ■ Lift cylinder and wheel holder electrolytically galvanised and yellow chromated, wheel bearing with rubber seal
- Fork chassis and drawbar glass-bead blasted and electro-polished
- Electrohydraulic lift, pump motor 1,1 kW, 12V
- Lifting speed 0.07 – 0.05 m/s, load-dependent
- Lowering speed 0.08 m/s
- Brakes and foot guard on the steerable wheels
- USDA class H2 lubricants
- Electronics protected from moisture by plastic spray.
- Not protected from water jets, just enclosed – not suited to permanently wet and aggressive environments (e.g. bases and salts)
- Incl. 12 V/105 Ah battery and external 12V/11A charger



Loading capacity (kg)	Fork length x Fork width (mm)	Distance across forks (mm)	Lifting height (mm)	Installed height / Overall height (mm)	Steerable wheels / Fork rollers	Item no.
1,000	1,150 x 163	560	1,200	1,530 / 1,530	Nylon / Nylon	16500
1,000	1,150 x 163	560	1,400	1,730 / 1,730	Nylon / Nylon	16550
1,000	1,150 x 163	560	1,600	1,930 / 1,930	Nylon / Nylon	16600
1,000	1,150 x 163	560	2,050	1,530 / 2,490	Nylon / Nylon	16625
1,000	1,150 x 163	560	2,450	1,730 / 2,890	Nylon / Nylon	16650
1,000	1,150 x 163	560	2,850	1,930 / 3,290	Nylon / Nylon	16675



## TRANSPORT STAINLESS STEEL HIGH-LIFT TRUCKS



### ELECTRIC LIFT TRUCK

- Material**
  - Lift truck made entirely from AISI 304 (V2A)
- Design**
  - Built according to GMP and FDA guidelines
  - Control unit, battery, and hydraulic unit are inside a watertight stainless steel housing
  - Drive power 1.1 kW, 24 V DC
  - Control system with three steps (contactor technology), 3 forward, 1 reverse
  - Weight incl. battery 600 kg
  - With traction battery, max. 2 PzS, 24V, 230 Ah in a rust-free plastic trough
  - With 24V 30A charger

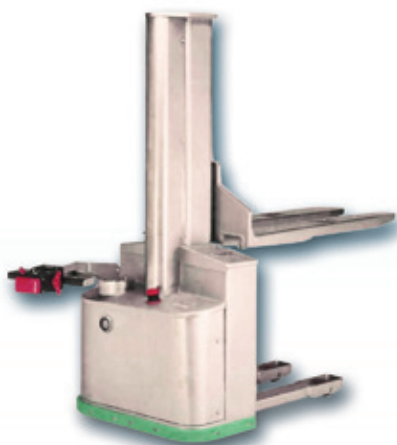
Loading capacity (kg)	Fork length (mm)	Distance across forks (mm)	Lifting height (mm)	Total length (mm)	Tyres	Item no.
2,000	1,150	550	205	1,800	Vulkollan	17400



### MONO-PHARMA (GMP) VARIANT

- Material**
  - All parts of the lift truck are made of stainless steel, material AISI 304/V2A/AISI 304, or plastic
- Design**
  - Central mast sealed
  - Lifting provided by a 24 V, 2 kW hydraulic unit
  - Propulsion provided by a 1 kW, 24 V drive
  - Continuously variable pulse control system for driving
  - Proportional control for the lift and for continuous raising and lowering
  - Surface electro-polished
  - Key switch and impact safety switch on the drawbar head
  - Control unit and battery are inside a watertight housing
  - With duplex telescopic mast

Loading capacity (kg)	Fork length / Fork width (mm)	Installed height (mm)	Lifting height (mm)	Free lift (mm)	Item no.
1,250	1,150 x 560	2,400	3,400	200	18200-1



### ELECTRIC LIFT TRUCK WITH CENTRAL MAST

- Material**
  - Made entirely from AISI 304 (V2A)
- Design**
  - Safety driving control
  - Discharge indicator
  - Euro battery connector
  - Main-current safety circuit
  - Safety switch with automatic reverse function
  - Key switch with rubber cover
  - Control unit, battery, and hydraulic unit are inside a watertight stainless steel housing
  - Contactor-based control system with 3 steps
  - Built for CE conformity and according to GMP + FDA guidelines
  - Vulkollan tyres
  - Perfectly hygienic variant
  - Easy to clean
  - With traction battery, max. 2 Pz, 190 Ah in a plastic trough

Loading capacity (kg)	Fork length (mm)	Distance across forks (mm)	Lifting height (mm)	Total length (mm)	Item no.
1,250	1,150	540	1,600	1,600	18200-2





## STAINLESS STEEL SACK BARROW

- Material ■ Stainless steel
- Design ■ With 4 mm-thick scoop
- Safety handgrips
- Wheel equipment ■ Nylon with plastic rims
- Similar to fig. – manufacture according to customer's requests

Height x Width (mm)	Scoop dimensions (L x W) in mm	Loading capacity (kg)	Item no.
1,100 x 500	350 x 170	150	10900
1,100 x 515	350 x 260	150	10950



## WHEELS/CASTORS

- Material ■ Holder profile made from rust-free stainless steel
- Wheel body made from aluminium
- Design ■ Autoclavable
- Wheel axle bolted, fastening for bottom plate
- Tyre made from heat-resistant silicone rubber, with cushioning effect
- Dry bearing bushing, wheel ø: 100 mm
- Loading capacity 80 kg, static: 160 kg
- Heat resistant up to 250°C
- Fig. 2 and 3: Swivel bearing with double ball ring



1



2

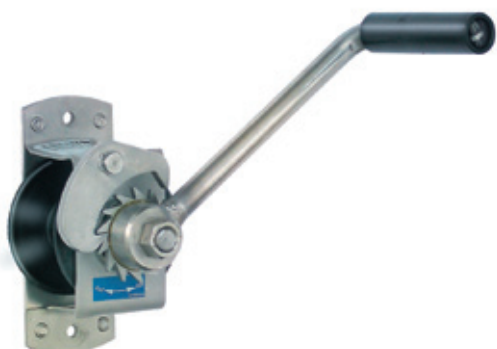


3

Fig.	Plate hole spacing (mm)	Plate dimensions (mm)	Tyre width (mm)	Item no.
1 – Fixed roller	80/77 x 60	100 x 85	35	21000
2 – Castor	80/77 x 60	105 x 85	35	21010
2 – Castor with brake	80/77 x 60	105 x 85	35	21015
3 – Castor with brake	80/77 x 60	105 x 85	35	21020



## TRANSPORT STAINLESS STEEL CABLE WINCHES



### MANUAL CABLE WINCH

- Material ■ AISI 304
- Design ■ Easy and safe to operate
- Problem-free attachment in a small space
- Self-locking, backlash-free safety crank
- With rotating and foldable crank handle
- Cable not provided

Tensile load (kg)	Crank rotation distance (mm)	Crank pressure (N)	Cable capacity (m)	Unladen weight (kg)	Item no.
125	135	170	15	4.0	85100
Accessories			Item no.		
Stainless steel cable, dia. 4 mm with hook pressed in, max. cable length 15 m			85110		

Please indicate the desired cable length in metres.



### MANUAL CABLE WINCH

- Material ■ AISI 304
- Design ■ Corrosion-resistant
- Removable crank
- Enclosed load-actuated brake
- Large cable capacity
- Load/high-speed gear with drum free spinning for rapidly removing the unladen cable

Tensile load (kg)	Crank rotation distance (mm), load/high-speed gear	Crank pressure (N)	Cable capacity (m)	Unladen weight (kg)	Item no.
500	37/280	170	25	11	85120
Accessories			Item no.		
Stainless steel cable, dia. 6 mm with hook pressed in, max. cable length 25 m			85130		

Please indicate the desired cable length in metres.



### ESF ELECTRIC CABLE WINCH

- Material ■ AISI 304
- Design ■ High-quality gearbox and 400 V/50 Hz, 3-phase AC motors
- For short cable lengths, compact design
- Maximum level of safety, functionality, and operating comfort
- Wide variety of options, special variants available upon request
- Cable not provided

Loading capacity (kg) 1st cable position	Loading capacity (kg) 2nd cable position	Motor output (kW)	1st cable position capacity (m)	3rd cable position capacity (m)	Unladen weight (kg)	Item no.
250	200	0.55	2.8	9.6	21.5	85150
500	400	1.1	3.2	11.0	38	85155



## SLEWING CRANE

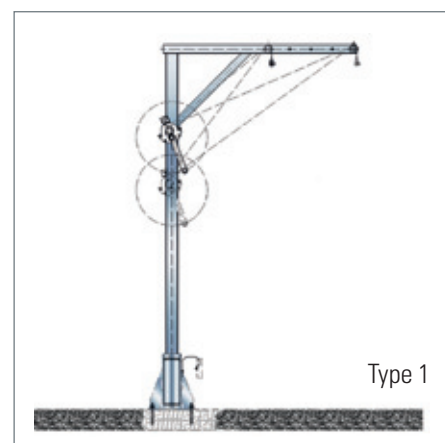
- Material**
- Type 1: available in V4A or hot-dip galvanised
  - Type 2: available in V2A or hot-dip galvanised
- Design**
- Universal slewing crane, special area of use: sewage treatment plants
  - Corrosion resistance
  - Wall or floor mounting options
  - Can be dismantled into manageable parts, for easy movement
  - Slewing range: 360°
  - Quality cable winch with additional wire rope for wrapping around the load at great lifting heights
  - Sleeve for wall or floor mounting
  - Optionally available with a pivoting lever



Type 2 (with additional safety cable for 500 kg tensile load)



Type 2



Type 1

### Stainless steel variant

Tensile load (kg)	Jib length (mm)	Jib adjustment range (mm)	Cable diameter (mm)	Height (mm)	Item no.
250 – Type 2	2,000	1,400 – 2,000	5	2,691	86100
300 – Type 1	1,300	700 – 1,300	5	2,350	86101
360 – Type 2	1,500	800 – 1,500	5	2,691	86102
360 – Type 2	2,000	1,400 – 2,000	5	2,490	86103
550 – Type 2	1,300	800 – 1,300	6	2,648	86104

Accessories	Item no.
Stainless steel sleeve for wall mounting, incl. 4 anchor bolts	86105
Stainless steel sleeve for floor mounting, incl. 4 anchor bolts	86106
Steel sleeve, hot-dip galvanised, for wall mounting, incl. 4 anchor bolts	86107
Steel sleeve, hot-dip galvanised, for floor mounting, incl. 4 anchor bolts	86108

### Aluminium variant

Tensile load (kg)	Unladen weight (kg)	Jib adjustment range (mm)	Cable diameter (mm)	Height (mm)	Item no.
160	20	600 – 1,000	5	2,350	86109

Accessories	Item no.
Aluminium sleeve for wall and floor mounting, incl. 4 anchor bolts	86111

Please append -ZN to the item number for the galvanised variant.



## LIFTING TRANSPORT TROLLEY



### Design

- Scissor lift via hydraulic cylinder
- Lift implemented via foot pedal
- With folding drawbar
- Wheel set, 2 castors and 2 fixed rollers
- Both castors with brakes
- Wheel ø 200 mm
- Wheel material: polyurethane

Loading capacity (kg)	Lift range mm	Tabletop (L x W) in mm	Lift per stroke mm	Overall dimensions (L x W) in mm	Item no.
500	460 – 1,070	1,190 x 740	20	1,220 x 740	19600
1,000	520 – 1,850	1,190 x 740	8	1,220 x 740	19610

## FLAT SCISSOR LIFT TABLE

### Material

- Hydraulic cylinder completely made from stainless steel
- Platform material: Smooth sheeting AISI 304

### Design

- For good ergonomics and increased workplace safety
- Extra flat installed height 80 mm
- Adjustable lowering speed
- Pressure-compensated lowering valve
- Pipe rupture safety valve on all cylinders
- Installation supports
- Enhanced lateral stability thanks to roller guide
- Lifting and lowering time 25/20 sec, regardless of load
- Complies with BGG 945 and the latest EC directives and hygiene provisions
- Hand-switch or foot-switch for lifting/lowering (dead-man's switch)
- Also available in AISI 316 Ti material on request

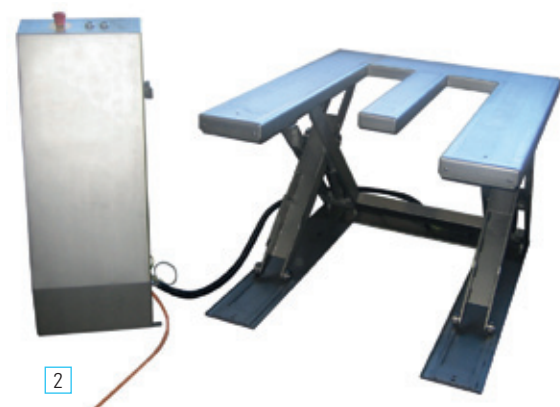


Fig.	Loading capacity (kg)	Lifting height mm	Usable lift mm	Pump motor power	Overall dimensions (L x W) in mm	Item no.
1	1,000	750	670	1.1 kW, 400 V, 50 Hz	1,000 x 900	19615
2	1,000	750	670	1.1 kW, 400 V, 50 Hz	1,300 x 1,040	19616



## SINGLE-ENDED TROLLEY WITH SMOOTH LOAD BED

- Material ■ AISI 304
- Design ■ Payload 400 kg
- 2 castors and 2 fixed rollers, housing made from stainless steel
- Both castors with stainless steel brakes
- Blue/grey, non-marking solid rubber tyres

Load bed (L x W) in mm	Overall dimensions (L x W x H) in mm	Wheel ø x Wheel width (mm)	Item no.
850 x 500	940 x 500 x 855	125 x 38	10100
1,000 x 700	1,100 x 700 x 890	160 x 40	10150



## SINGLE-ENDED TROLLEY, LOAD BED WITH PERIPHERAL EDGING

- Material ■ AISI 304
- Design ■ Payload 400 kg
- 2 castors and 2 fixed rollers, housing made from stainless steel
- Both castors with stainless steel brakes
- Blue/grey, non-marking solid rubber tyres

Load bed (L x W) in mm	Overall dimensions (L x W x H) in mm	Wheel ø x Wheel width (mm)	Item no.
840 x 480	940 x 505 x 855	125 x 38	10500
1,000 x 680	1,105 x 705 x 890	160 x 40	10550



## SINGLE-ENDED TROLLEY WITH TUBULAR LOAD BED

- Material ■ AISI 304
- Design ■ Payload 400 kg
- 2 castors and 2 fixed rollers, housing made from stainless steel
- Both castors with stainless steel brakes
- Blue/grey, non-marking solid rubber tyres

Load bed (L x W) in mm	Overall dimensions (L x W x H) in mm	Wheel ø x Wheel width (mm)	Item no.
850 x 500	940 x 500 x 855 mm	125 x 38	10200
1,000 x 700	1,100 x 700 x 890 mm	160 x 40	10250



## DOUBLE-ENDED TROLLEY

- Material ■ AISI 304
- Design ■ Payload 400 kg
- 2 castors and 2 fixed rollers, housing made from stainless steel
- Both castors with stainless steel brakes
- Blue/grey, non-marking solid rubber tyres

Load bed (L x W) in mm	Overall dimensions (L x W x H) in mm	Wheel ø x Wheel width (mm)	Item no.
840 x 480	1,040 x 505 x 855 mm	125 x 38	10600
1,000 x 700	1,200 x 705 x 890 mm	160 x 40	10650



Also available with smooth platform





Also available with smooth platform

### MULTI-LEVEL TROLLEY WITH 2 SHELVES

- Material ■ AISI 304
- Design ■ Payload 400 kg
- 2 castors and 2 fixed rollers, housing made from stainless steel
- Both castors with stainless steel brakes
- Blue/grey, non-marking solid rubber tyres
- Clearance between shelves 460 mm, load heights: 222 x 710 mm

Loading space (mm)	Overall dimensions (L x W x H) in mm	Wheel ø x Wheel width (mm)	Item no.
840 x 480	1,040 x 505 x 855 mm	125 x 35	10700
1,000 x 680	1,200 x 705 x 890 mm	160 x 40	10750



Also available with smooth platform

### MULTI-LEVEL TROLLEY WITH 3 SHELVES

- Material ■ AISI 304
- Design ■ Payload 400 kg
- 2 castors and 2 fixed rollers, housing made from stainless steel
- Both castors with stainless steel brakes
- Blue/grey, non-marking solid rubber tyres
- Clearance between shelves 255 mm, load heights: 222/467/712 mm

Loading space (mm)	Overall dimensions (L x W x H) in mm	Wheel ø x Wheel width (mm)	Item no.
840 x 480	1,040 x 505 x 855 mm	125 x 35	10800
1,000 x 680	1,200 x 705 x 890 mm	160 x 40	10850



### HANDLE DOLLIES

- Material ■ AISI 304
- Design ■ Payload 400 kg
- 2 castors and 2 fixed rollers, housing made from stainless steel
- Both castors with stainless steel brakes
- Blue/grey, non-marking solid rubber tyres
- Wheel ø x Wheel width: 125 x 35 mm

Loading space	Loading space (mm)	Overall dimensions (L x W x H) in mm	Item no.
Closed board	600 x 500	905 x 500 x 1,000	10300
Tubular load bed	600 x 500	905 x 500 x 1,000	10350



### HANDLELESS DOLLIES

- Material ■ AISI 304
- Design ■ Payload 400 kg
- 2 castors and 2 fixed rollers, housing made from stainless steel
- Both castors with stainless steel brakes
- Blue/grey, non-marking solid rubber tyres
- Wheel ø x Wheel width: 125 x 35 mm

Loading space	Loading space (mm)	Overall dimensions (L x W x H) in mm	Item no.
Closed board	600 x 500	600 x 500 x 187	10400
Tubular load bed	600 x 500	600 x 500 x 185	10450





## SERVING TROLLEY, LIGHTWEIGHT DESIGN

- Material ■ AISI 304
- Design ■ Loading capacity per shelf 40 kg
- Shelves not equipped with noise reduction mat
- 2 castors and 2 fixed rollers, housing made from rust-free stainless steel
- 2 castors with brakes, treadless tyres
- Wheel diameter 125 mm
- Shelves with raised profiled edge all-around, no dirt-collecting corners
- With plastic deflecting castors



Number of shelves	Shelf dimensions (L x W) in mm	Overall dimensions (W x D x H) in mm	Item no.
2	600 x 400	700 x 500 x 895	11100 M
3	600 x 400	700 x 500 x 895	11200 M
2	800 x 500	900 x 600 x 940	11125 M
2	1,000 x 600	1,100 x 700 x 940	11150 M
3	800 x 500	900 x 600 x 940	11225 M
3	1,000 x 600	1,100 x 700 x 940	11250 M
4	800 x 500	900 x 600 x 1,260	11325 M

## SERVING TROLLEY, HEAVY-DUTY DESIGN

- Material ■ AISI 304
- Design ■ Loading capacity per shelf 60 kg
- Shelves not equipped with noise reduction mat
- 2 castors and 2 fixed rollers, housing made from rust-free stainless steel
- 2 castors with brakes, treadless tyres
- Wheel diameter 125 mm
- Shelves with raised profiled edge all-around, no dirt-collecting corners
- With plastic deflecting castors



Number of shelves	Shelf dimensions (L x W) in mm	Overall dimensions (W x D x H) in mm	Item no.
2	800 x 500	900 x 600 x 1,020	11525 M
2	1,000 x 600	1,100 x 700 x 1,020	11550 M
3	800 x 500	900 x 600 x 1,020	11625 M
3	1,000 x 600	1,100 x 700 x 1,020	11650 M
4	1,000 x 600	1,100 x 700 x 1,335	11651 M



# THE HIGHEST REQUIREMENTS IN HYGIENE AND CLEANNESS? WE ALSO!



**HYGIENE / AIR LOCK**



## HYGIENE / AIR LOCK

### STAINLESS STEEL DISINFECTANT DISPENSERS

#### SINGLE DISINFECTANT DISPENSER

- Material ■ AISI 304, brushed
- Design ■ For 1 litre refillable or single-use bottles  
 ■ With one empty HDPE standard bottle  
 ■ Housing with pump autoclavable up to 121°C  
 ■ For wall surface mounting



Operating lever	Dimensions (H x W x D) in mm with operating lever	Item no.
Short	324 x 94 x 151	35332
Long	324 x 94 x 225	35412
Extra long	324 x 94 x 322	35448

#### MULTI-DISPENSER

- Material ■ AISI 304, brushed
- Design ■ Multi-dispenser for 2 or 3 dispensers  
 ■ With 2 or 3 empty HDPE standard bottles, depending on the design  
 ■ Housing with pumps autoclavable up to 121°C  
 ■ With 5 replaceable clips to identify: "Protection", "Disinfection", "Cleaning", "Washing", and "Care"  
 ■ For wall surface mounting



Number of dispensers/ Bottle capacity (l)	Dimensions (H x W x D) in mm with operating lever	Item no.
2 / 1.0	321 x 182 x 150	35392
3 / 0.5	284 x 272 x 154	35594
3 / 1.0	321 x 272 x 150	35394

#### ACCESSORIES

Drip tray with bracket available separately: **item no. 37325**

#### CONTACTLESS ALUMINIUM DISINFECTANT DISPENSER

- Design ■ Housing made from anodised aluminium  
 ■ Stainless steel pump autoclavable  
 ■ Increased hygiene standards thanks to sensor control technology  
 ■ Electronics protected from humidity  
 ■ Bar for manual operation in case of flat battery



Dimensions (H x W x D) in mm	Item no.
330 x 92 x 210	60885

#### UNBREAKABLE WALL-MOUNTED MIRROR, MADE FROM MIRROR-POLISHED STAINLESS STEEL

- Material ■ AISI 304
- Design ■ Folded edges  
 ■ For wall surface mounting  
 ■ Also suitable for grouting flush into a tiled surface  
 ■ Unbreakable  
 ■ With moisture-proof mounting plate



Dimensions (H x W x D) in mm	Recess in tiles (mm)	Item no.
389 x 389 x 9	400 x 400	60880
489 x 389 x 9	500 x 400	60881
589 x 389 x 9	600 x 400	60882
589 x 489 x 9	600 x 500	60883
589 x 589 x 9	600 x 600	60884



## SOAP DISPENSER

- Material ■ AISI 304, brushed
- Design ■ Free filling (without supplier relationship) via refillable plastic containers
- Bar-operated
- With fill indicator
- With unit lock
- For wall surface mounting



Capacity (litres)	External dimensions (H x W x D) in mm with bar	Item no.
0.6	265 x 84 x 109	61000
1.2	335 x 98 x 134	61100

## PAPER TOWEL DISPENSER

- Material ■ AISI 304, brushed
- Design ■ Freely fillable with folded paper towels (C-fold, Z-fold, or interfold)
- With anti-jamming device
- Towel dispensing mechanism made of plastic
- With fill indicator
- With unit lock
- For wall surface mounting



Towel capacity	External dimensions (H x W x D) in mm	Item no.
300 pcs	200 x 278 x 133	62000
500 pcs	350 x 278 x 133	62100

## COAT AND HEAD COVER DISPENSER

- Material ■ AISI 304, matt-finished surface
- Design ■ High-quality and robust design
- For safe storage of various disposable items
- Unified appearance
- Hygienic variant with sloped top
- With internal mechanism to avoid removing too many of the disposable items

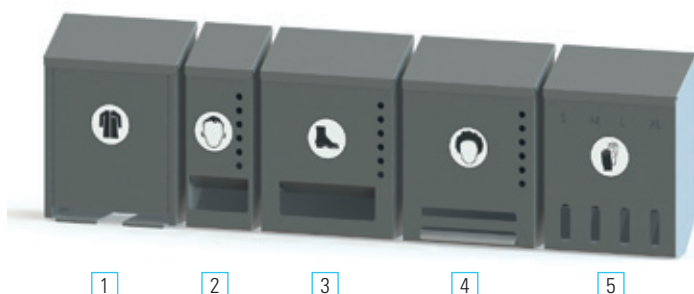


Figure	External dimensions (W x D x H) in mm	Design	Item no.
1 – Disposable coats	406 x 170 x 565	Flat, individually packaged	62210
2 – Hearing protection	206 x 170 x 565	In small package, loosely filled	62220
3 – Shoe covers	406 x 170 x 565	In small package, loosely filled	62230
4 – Head covers	406 x 170 x 565	In small package, loosely filled	62240
5 – Gloves	406 x 170 x 565	Loosely filled, separated by size: S, M, L and XL	62250

## GLOVE AND DISPOSABLE-WIPE BOX HOLDER

Screws and dowels included

1



2



Figure	Dimensions (H x W x D) in mm	Material	Capacity	Item no.
1	250 x 138 x 87	Stainless steel, brushed	1 box	14175
2	380 x 252 x 87	Stainless steel, brushed	3 boxes	14176





### STAINLESS STEEL HOOKS

- Material ■ AISI 304, brushed  
Design ■ For wall surface mounting



Figure	Dimensions (W x H x L) in mm	Item no.
1 – Clothes hook	20 x 20 x 56	35266
2 – Clothes hook	15 x 15 x 50	25266
3 – Single hook	50 x 87 x 45	20794
4 – Double hook	80 x 87 x 42	20795
5 – Clothes and hat hook	30 x 159 x 100	20874
6 – Clothes hook with door stop	18 x 18 x 72	60867
7 – Clothes hook	18 x 18 x 65	60853
8 – Clothes hook	15 x 25 x 45	60850
9 – Hook bar with 2 hooks	112 x 65 x 27	60851
10 – Hook bar with 5 hooks	186 x 65 x 29	60852



### RECYCLABLES COLLECTOR

- Material ■ AISI 304  
Design ■ With 1 – 4 plastic containers, grey  
■ Capacity 50 l  
■ With 4 castors, 2 of which with brakes, solid rubber, wheel ø 75 mm with stainless steel wheel housing
- Variants
- 1 ■ Standard design
  - 2 ■ Fire-resistant design (with closed back wall and bottom; increases the depth of the unit by 30 mm)

Dimensions (H x W x D) in mm	Number of containers	1 – Standard design	2 – Fire-resistant design
785 x 390 x 550	1	87100	87110
785 x 730 x 550	2	87120	87130
785 x 1,070 x 550	3	87140	87150
785 x 1,410 x 550	4	87160	87170





## PUSH BIN

- Material ■ AISI 304, brushed
- Design ■ With lid  
■ With self-closing disposal flap  
■ Non-slip thanks to rubber feet  
■ For wall surface mounting or freestanding use



Capacity (litres)	External dimensions (H x W x D) in mm	Item no.
18	507 x 278 x 183	64000
50	680 x 380 x 250	64100

## PEDAL BIN

- Material ■ AISI 304, brushed
- Design ■ With rubber-coated steel pedal for opening the lid  
■ Removable interior insert, galvanised  
■ With rubber ring in base to protect the floor  
■ Freestanding



Capacity (litres)	External dimensions (H x ø) in mm	Item no.
5	290 x 200	64220
12	400 x 250	64230
19	450 x 290	64240
30	680 x 290	64250

## WASTE CONTAINER

- Material ■ AISI 304
- Design ■ Surface: brushed, transparent powder coating to guard against finger prints and marks  
■ Gas-pressure-dampened disposal flap with edge protection  
■ Can be operated by hand or with a pedal  
■ Tested, self-extinguishing, with sheet steel internal container, or with holding fixture for the waste bag, which pulls out on telescopic rails  
■ Wheel-less



Capacity (litres)	Dimensions (H x W x D) in mm	Operating method	Sheet steel internal container	Waste bag holder
45	800 x 400 x 380	Foot	400457	400456
45	800 x 400 x 380	Hand	400459	400458
60	900 x 400 x 380	Foot	40067	40066
60	900 x 400 x 380	Hand	40069	40068
75	1,000 x 400 x 380	Hand	400759	400758
75	1,000 x 400 x 380	Foot	400757	400756
120	1,100 x 450 x 450	Hand	400129	400128
120	1,100 x 450 x 450	Foot	400127	400126



## HYGIENE / AIR LOCK STAINLESS STEEL WASTE BASKETS



### WIRE WASTE BASKET

- Material ■ AISI 304 or steel with white coating
- Design ■ Made from wire mesh
- For use with or without a waste bag
- With wall bracket for surface mounting or for freestanding use

Capacity (litres)	Dimensions (H x W x D) in mm	Design	Item no.
25	450 x 300 x 200	Steel with white coating	100754
25	450 x 300 x 200	Polished stainless steel	100755
60	630 x 400 x 275	Steel with white coating	100756
60	630 x 400 x 275	Polished stainless steel	100757



### STAINLESS STEEL RUBBISH BAG HOLDER

- Material ■ AISI 304
- Design ■ Lid opens with the foot pedal
- For mounting 120 l (700 x 1,100 mm) plastic sacks
- Available with or without optional height-adjustable support plate (recommended for heavy materials)
- Simply place the plastic sack over the holding fixture and secure using the rubber ring

	Capacity (litres)	Dimensions (ø x H) in mm	Item number
With plate	120	500 x 970	14120
No plate	120	500 x 970	14125



Wall mounting

1



2

### STAINLESS STEEL TOILET PAPER HOLDER

- Material ■ AISI 304
- Design ■ Folds out from round tube
- Tube diameter 28 mm, for toilet paper rolls up to 430 mm wide
- With serrated knife, length: 520 mm
- Not supplied with plastic retaining clamp

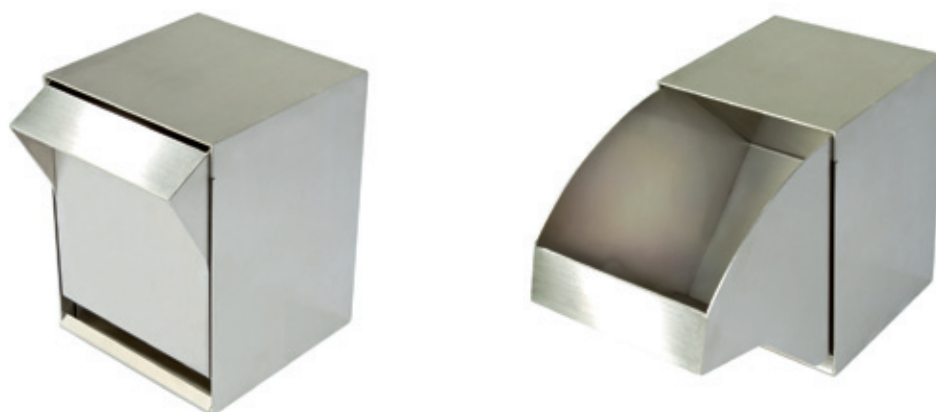
Fig.	Dimensions (H x W x D) in mm	Item no.
1	350 x 550 x 400	63200
2	870 x 500 x 500	63150



## STAINLESS STEEL FOLDING BOX

- Material ■ AISI 304  
Design ■ Fold-out box with handle opening

H x W x D (mm)	Item no.
200 x 150 x 150	14799



## PLASTIC FOLDING BOX

- Design ■ PS (polystyrene) housing, transparent boxes made of PP (polypropylene)  
■ Temperature-resistant from -20 to +80°C  
■ Pivoting transparent box  
■ For storing disposable gloves, head coverings, etc.



Capacity per box: 14 l

Housing dimensions (W x D x H) in mm	Item no.
601 x 311 x 353	14802



Capacity per box: 4 l

Housing dimensions (W x D x H) in mm	Item no.
601 x 198 x 238	14803



Capacity per box: 2 l

Housing dimensions (W x D x H) in mm	Item no.
601 x 172 x 206	14804



Capacity per box: 1 l

Housing dimensions (W x D x H) in mm	Item no.
601 x 136 x 163	14805



## CLOTHES RACK



Double hooks	Width (mm)	Item no.
4	750	02622
5	950	02623
6	1,150	02624

## CLOTHES RAIL



Rail width x ø (mm)	Item no.
420 x 8	01028

## SHOE RAIL, WALL-MOUNTED



Number of holders	Width (mm)	Item no.
2 pairs	600	02643
3 pairs	750	02641
4 pairs	1,150	02642

## BOOT RAIL, WALL-MOUNTED



Number of holders	Width (mm)	Item no.
2 pairs	600	02648
3 pairs	750	02649
4 pairs	1,150	02650



## SHOE RACK, FREESTANDING, NO DRYING SYSTEM



Number of holders	Dimensions (H x W x D) in mm	Item no.
12 pairs, single-sided	1,700 x 900 x 485	02644
20 pairs, single-sided	1,968 x 1,187 x 485	02645
40 pairs, double-sided	1,968 x 1,187 x 800	02647

## BOOT RACK, WALL-MOUNTED



Number of holders	Dimensions (H x W x D) in mm	Item no.
12 pairs	1,287 x 1,170 x 437	02751
16 pairs	1,750 x 1,170 x 437	02752
20 pairs	2,112 x 1,170 x 437	02753

## BOOT RACK, FREESTANDING, NO DRYING SYSTEM



Number of holders	Dimensions (H x W x D) in mm	Item no.
12 pairs, single-sided	1,720 x 900 x 478	02651
20 pairs, single-sided	2,148 x 1,187 x 478	02652
40 pairs, double-sided	2,148 x 1,187 x 800	02653

## BOOT RACK, FREESTANDING, WITH DRYING SYSTEM

- Plug-in ready incl. fan
- With 230V power cable
- Drying is provided by an integrated fan, which simple conveys room-temperature air to the drying nozzles



Number of holders	Dimensions (H x W x D) in mm	Item no.
12 pairs, single-sided	1,500 x 1,187 x 478	03023
20 pairs, single-sided	2,148 x 1,187 x 478	03025
40 pairs, double-sided	2,148 x 1,187 x 800	03026





### FIRST-STEP

- Material ■ Polyolefin
- Design ■ 30 layers of anti-bacterial film / unit  
■ Stick the mat to the floor and pull off the film as needed  
■ The layers are provided with an anti-bacterial coating; reliable protection from fine dirt in sensitive areas or clean rooms  
■ 1 pack = 4 mats with 30 layers each



Dimensions (L x W) in mm	Material thickness (mm)	Package contents	Item no.
450 x 1,170	1.5	4 mats with 30 layers each	55800



### STAINLESS STEEL MAT FRAME

- Material ■ AISI 304
- Design ■ Size: fits the above item number  
■ Frame height: 10 mm  
■ Other dimensions also available upon request

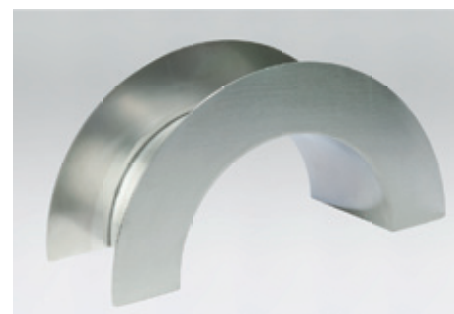
Item no. 55801





## HOSE HOLDER

- Material ■ AISI 304
- Design ■ Matt-finished surface
- For wall mounting



Width (mm)	Depth (mm)	Height (mm)	Item no.
400	150	200	85205

## HOSE PIPE CART

- Material ■ AISI 304, rust-free
- Design ■ Solid rubber wheels
- Water connection in centre
- Double bearing
- 3/4" water connection
- Comes pre-assembled
- Hose not included
- Able to withstand pressures up to max. 10 bar



Dimensions (H x L x W) in mm	Weight (kg)	Hose capacities	Item no.
1,020 x 620 x 615	17.6	1/2" = 120 m, 3/4" = 80 m 5/8" = 100 m, 1" = 50 m	85410

## HOSE REEL (HOSE NOT INCLUDED)

- Material ■ AISI 304
- Design ■ Open design, max. pressure 15 bar
- Made almost entirely from stainless steel (incl. rotary feedthrough)
- Wall, floor, or ceiling mounting options
- Drum lock, 6x, with hose stop
- Hose outflow provided by 4 rollers, dismantlable
- Enclosed spring drive, drum with ball bearings on both sides
- Max. hose length 25 m, CE-compliant
- Hose connections: 1/2", 3/4", 1" BSP 60° tapered, OT
- Temperature range 90°C, weight 28 – 34 kg
- Ex-protected variant upon request



Hose reel (hose not included)

For hose length (m)	Hose ø (mm)	Item no.
25	1/2" – 12.5	85221-N
18	3/4" – 19.0	85222-N
14	1" – 25.0	85223-N

HP hose for hose reel

Hose length (m)	Hose ø (mm)	Item no.
25	1/2" – 12.5	85301-N
18	3/4" – 19.0	85302-N
14	1" – 25.0	85303-N



### STAINLESS STEEL HOSE REEL

- Material** ■ AISI 304, robust stainless steel construction
- Design** ■ Bracket for wall/ceiling/floor mounting
- High-quality main springs for long service life
- Automatic locking mechanism
- Rubber stop for custom adjustment of the hose length off the drum
- Additional fastening elements available for easy installation
- The hose reel is designed for an operating pressure of up to 100 bar and temperatures up to 130°C
- Hose reel for compressed air and hot water



Hose reels (hoses not included).  
Appropriate hoses can be found on page 133 or are available upon request.

Winding length external ø	Inlet (mm)	Outlet	Item no.
12 mm – max. 22 m	F 1/2" G	F 1/2" G	85411
14 mm – max. 20 m	F 1/2" G	F 1/2" G	
16 mm – max. 18 m	F 1/2" G	F 1/2" G	

Winding length external ø	Inlet (mm)	Outlet	Item no.
17 mm – max. 21 m	F 1/2" G	M 1/2" G	85412
19.5 mm – max. 16 m	F 1/2" G	M 1/2" G	
22 mm – max. 14 m	F 1/2" G	M 1/2" G	

Winding length external ø	Inlet (mm)	Outlet	Item no.
18.5 mm – max. 28 m	F 1/2" G	M 1/2" G	85413
20 mm – max. 26 m	F 1/2" G	M 1/2" G	
22 mm – max. 24 m	F 1/2" G	M 1/2" G	

Winding length external ø	Inlet (mm)	Outlet	Item no.
28 mm – max. 22 m	F 1" G	F 1" G	85414
34 mm – max. 17 m	F 1" G	F 1" G	

Winding length external ø	Inlet (mm)	Outlet	Item no.
17 mm – max. 30 m	F 1/2" G	M 1/2" G	85415
19.5 mm – max. 30 m	F 1/2" G	M 1/2" G	
22 mm – max. 30 m	F 1/2" G	M 1/2" G	

Winding length external ø	Inlet (mm)	Outlet	Item no.
30 mm – max. 40 m	F 1" G	F 1" G	85416
35 mm – max. 30 m	F 1" G	F 1" G	

Inlet = Rotating joint thread nominal width

Outlet = Drum body thread nominal width

F = Female (inner) thread

M = Male (outer) thread



### STAINLESS STEEL PIVOTING BRACKET

Length x Width (mm)	Depth (mm)	Item no.
208 x 165	94	85417
208 x 165	94	85418
300 x 268	129	85419



## FOODSTUFF CONVEYING HOSE

- Material**
- TPE inner liner, white, smooth, taste and odour-free
  - TPE outer cover, blue, smooth
- Design**
- For liquid foodstuffs such as drinking water, beer, wine, milk, juices, animal and vegetable fats and oils (excluding poultry fats)
  - Can be steam cleaned up to maximum 120°C for short periods, or washed out with hot water and a standard cleaning product
  - Operating pressure 20 bar / Burst pressure 60 bar
  - Temperature range from -15°C to maximum +95°C



Internal ø (mm)	Wall thickness (mm)	External ø (mm)	Item no.
10 (3/8")	3.5	17	85420
13 (1/2")	3.5	20	85421
19 (3/4")	4.0	27	85422
25 (1")	4.5	34	85423

## CLEANING HOSE, 80 BAR

- Material**
- Outer cover: made from synthetic rubber; oil, ozone, & weather-resistant
  - Reinforced by two high-tensile textile braids
  - Inner liner: made from synthetic, oil-resistant rubber
- Design**
- Temperature range from -40°C to +120°C
  - For water, water/oil emulsions, water mixtures with cleaning agents up to 50%
  - Wear-resistant, food-safe outer cover



Internal ø (mm)	Operating pressure (bar)	External ø (mm)	Item no.
12	80	19.7	85424

## STAINLESS STEEL SPRAY GUN

- Material**
- AISI 316 L
- Design**
- Regulatable throughput
  - Leaktightness provided by a double seal on the needle
  - Lever lockable for extended use
  - Maximum temperature: + 95°C
  - Fig. 1: Handgrip double-insulated (with air chambers for cooling down)



Dimensions (mm)	Weight (g)	Inner thread	Max. pressure (bar)	Item no.
Fig. 1 – 159 x 189	970	1/2"	24	85425
Fig. 2 – 159 x 189	950	1/2"	24	85426

Accessories	Item no.
Stainless steel rotating joint, water 1/2" OT – 3/4" in seal, 25 bar, temperature up to 90°C, rotatable 360°C	85427



## PHARMACEUTICAL & CHEMICAL INDUSTRY

In the clean rooms of the pharmaceutical industry, as well as the cosmetics industry, a certain level of safety is demanded with regard to particles in clean rooms. The objective here is to eliminate micro-organisms. In order to ensure hygienic purity, no impurities may be allowed to enter or be distributed by the machinery used in production, while still achieving the desired results.

This necessarily means that a piece of machinery suitable for a clean room must have as few mechanical components as technically possible. EasyMop GMP has the lowest required number of pivot points and no open, dirt-collecting edges. Thanks to the use of GMP-suitable stainless steel, it can be sterilised; thanks to its small dimensions, EasyMop GMP can be accommodated by practically any autoclave. One vital precondition in successful disinfection is the application of sufficient disinfectant solution to the surface. To ensure that this is the case, first ensure that the mop head is soaked – as accurately as possible – with the same amount of solution.

### This requires:

Precision during preparation: the average deviation in soaking quantity is 1 percent; this means that for a soaking quantity of 400 ml the individual mop heads only vary by 4 millilitres! No other system for individual mop preparation can achieve such precise reproducibility.

### The features of EasyMop GMP

- Safety is a feature of the system:  
no possibility of operating errors
- Reproducibility:  
textiles are soaked with no intervention from the operator
- Validation:  
The soaking process as a rule delivers identical results
- The dosing amounts can be varied, according to the intended use (cleaning floors, walls, or ceilings) or type of mop (reusable or disposable), between 130, 250 and 400 ml.
- Compliant with GMP guidelines  
Produced entirely from stainless steel. The sole pivot point is mounted in a FDA-compliant plain bearing bushing.
- Hygienic design:  
no inaccessible places or dead spaces
- Ergonomics and learnability:  
self-explanatory system, operated with minimal force
- Avoidance of contamination:  
the whole working process is contact-free.



## EASYMOP GMP 1 CLEANING TROLLEY FOR HIGHLY-SENSITIVE AREAS

- |          |   |
|----------|---|
| Material | ■ AISI 304, stainless steel suitable for clean rooms, all components autoclavable |
| Design   | ■ Tube thickness 22 mm  |
|          | ■ Autoclavable special castors ø 100 mm   |
|          | ■ Customisable thanks to a modular system   |
|          | ■ 2 stainless steel containers, 4 litres  |
|          | ■ Equipment variants 2, 3, and 4 (see page 135)                                   |

Dimensions (L x W x H) in mm	Area coverage m <sup>2</sup>	Item no.
610 x 630 x 1,020	0.4	200810



## EASYMOP GMP 2 CLEANING TROLLEY

- Material** ■ AISI 304, stainless steel suitable for clean rooms, all components autoclavable
- Design** ■ Autoclavable special castors ø 100 mm
- Customisable thanks to a modular system
- Easy and safe to operate, with just one dosing process
- Contact-free operation without any effort
- Precise soaking to an accuracy of 1% with just one dosing process
- 1 stainless steel container, 25 litres, for cleaning/disinfectant fluid
- 1 stainless steel container, 9 litres, for fresh mop heads
- Equipment variants 2 and 3 (see below)

Dimensions (L x W x H) in mm	Area coverage m <sup>2</sup>	Item no.
750 x 630 x 1,020	0.5	200820



## EASYMOP GMP 3 CLEANING TROLLEY

- Material** ■ AISI 304, stainless steel suitable for clean rooms, all components autoclavable
- Design** ■ Tube thickness 22 mm
- Autoclavable special castors ø 100 mm
- Customisable thanks to a modular system
- 1 stainless steel container, 25 litres, for cleaning/disinfectant fluid
- 1 stainless steel container, 9 litres, for fresh mop heads
- With certified flat mop wringer
- Equipment variants 2, 3, and 4 (see below)

Dimensions (L x W x H) in mm	Area coverage m <sup>2</sup>	Item no.
740 x 720 x 1,020	0.5	200830



## SPECIAL EQUIPMENT / ACCESSORIES

Equipment variant 2:

- With 3 storage compartments for different mop holders
- Item no. S-200811



Equipment variant 3:

- Additional attachment of a stainless steel container, 4 litres, e.g. for cloth drop
- Item no. S-200812



Equipment variant 4:

- Additional attachment of a stainless steel container, 9 litres (only possible for EasyMop method)
- Item no. S-200813



## DISPOSAL BAG

1 x 35 litres, sterile, medium-sized, transparent

Item no. B-200814



## MOP DROP

Contactless mop drop

Item no. M-200815

Not pictured

## STAINLESS STEEL MOP HOLDER

With one-piece shaft

Item no. MH-200816

Not pictured



### **MOP (COARSE)**

For cleaning and disinfecting GMP areas for up to 50 washing cycles

- |           |   |
|-----------|---|
| Material  | <ul style="list-style-type: none"><li>■ 100% polyester microfibre yarn (0.5 D)</li><li>■ Weight: 150 g</li><li>■ Thermal stability: melting point 250 – 260°C</li><li>■ Absorption capacity: 3 ml/g</li><li>■ Fibre strength (tear resistance): 14.0 kg</li><li>■ Elasticity: 57.5%</li></ul> |
| Equipment | <ul style="list-style-type: none"><li>■ Produced from special yarn suitable for clean rooms</li><li>■ Maximum cleaning performance provided by microfilaments</li><li>■ Reliable disinfection thanks to uniform dampening</li><li>■ Washable and reusable</li><li>■ Autoclavable</li></ul>    |
- Item no.: M-200817**



### **MOP (FINE)**

For cleaning and decontamination of clean rooms up to ISO Class 5, up to 50 washing cycles

- |           |   |
|-----------|---|
| Material  | <ul style="list-style-type: none"><li>■ 80% polyester microfibre, 20% polyamide</li><li>■ Weight: 120 g</li><li>■ Material compatibility: resistant to all professional cleaning and disinfection products.</li></ul>   |
| Equipment | <ul style="list-style-type: none"><li>■ Washable up to 95°C</li><li>■ Produced from polyester microfibre special yarn</li><li>■ Maximum cleaning performance</li><li>■ Reliable pick-up of particulates by a high/low structure</li><li>■ Washable and reusable</li></ul> |
- Item no.: M-200818**



### **DISPOSABLE CLOTH**

- |          |   |
|----------|---|
| Material | <ul style="list-style-type: none"><li>■ Non-woven fabric, cellulose/polyester</li></ul>   |
| Design   | <ul style="list-style-type: none"><li>■ For all smooth surfaces in the semiconductor and pharmaceutical industries</li><li>■ Excellent absorption capacity</li><li>■ High wear-resistance</li><li>■ Low emissions of particulates and fibres</li><li>■ Weight: 3 g</li><li>■ Dimensions (L x W): 320 x 320 mm</li><li>■ 300 units in each pack/1 box contains 8 packs</li></ul> |
- Item no.: 200819**





## MULTI-USE CLOTH

- Material** ■ Polyester/carbon, with overlock seam
- Design** ■ For all smooth and water-resistance surfaces  
 ■ Electro-statically conductive  
 ■ Autoclavable  
 ■ Low particulate emissions  
 ■ 5 units in each pack – lesser quantities are also available upon request



Dimensions (L x W) in mm	Weight (g)	Item no.
260 x 260	10	200820-P
350 x 340	16	200821-P

## MICROFIBRE CLOTH

- Material** ■ 80% polyester, 20% polyamide (with overlock seam)
- Design** ■ For all super-smooth surfaces such as glass, mirrors, etc.  
 ■ Multi-use cloth  
 ■ Non-sterile  
 ■ For streak-free cleaning of smooth surfaces



Dimensions (L x W) in mm	Weight (g)	Item no.
310 x 380 – blue	48	200822
310 x 380 – green	48	200823

## STAINLESS STEEL CLEANING, SEALING, AND RECONDITIONING

For cleaning our high-quality stainless steel products, we recommend:

### Stainless steel cleaning paste

- Clean and seal stainless steel
- In a single process
- With no aggressive chemicals
- Used sparingly – keeps for a long time!
- 100% biodegradable!

### Purpose

- For cleaning, polishing up, and conserving stainless steel, metal, glass, plastic, and smooth surfaces down to the pore level

### Ingredients & composition

- Contains 5 – 15% soap, fragrances, limonene, citral

### Stainless steel cloth (microfibre)

- The anti-bacterial stainless steel cloth removes the heaviest dirt in no time
- With little effort, the laser-engraved side removes dirt and the absorbent microfibre pick it up immediately

We are happy to supply a sample for a 14-day test upon request.



Product	Description	Item no.
Stainless steel cleaner	250 grammes	57050-P
Sponge	In separate container	57055-P
Stainless steel polishing cloth	For perfect cleanness	57056-P
Cleaning set at a special price	Cleaner with sponge + cloth	57057-P



## STAINLESS STEEL POLISHING SPRAY

- Stainless steel polishing spray
- Removes contaminants of all types from stainless steel surfaces
- Leaves behind a dirt-repellent protective care film
- No deposited layers on the surface, even after multiple applications
- Free of chlorinated solvents and CFCs
- Volume 400 ml (spray can)

Item no. EP-400



## STAINLESS STEEL SQUEEGEE

- Design
- For glass cleaning
  - Autoclavable

Length (mm)	Squeegee item no.	Replacement rubber lip item no.
250	200824	200826
350	200825	200827

## STAINLESS STEEL DUSTPAN

- Material
- AISI 420
- Design
- All stainless steel
  - Autoclavable

Dimensions (L x W x H) in mm	Item no.
400 x 220 x 55	200828



## HAND BRUSH

- Material ■ Body: PP, trim: PBT\*
- Design ■ With direction of movement for hygienically sensitive areas  
 ■ Height of trim 45 mm  
 ■ Uncut fibre ends  
 ■ Hard bristle material, white

Dimensions (L x W x H) in mm	Item no.
310 x 40 x 90	200829



## LONG-HANDLED BRUSH

- Material ■ Body: PP, trim: PBT\*
- Design ■ Trim height 35 mm  
 ■ Uncut fibre ends  
 ■ Hard bristle material, white

Dimensions (L x W x H) in mm	Item no.
400 x 48 x 70	200831



## SEAM BRUSH

- Material ■ Body: PP, trim: PBT\*
- Design ■ Trim height 45 mm  
 ■ Uncut fibre ends  
 ■ Semi-hard bristle material, white

Dimension (length in mm)	Item no.
490	200832



## NARROW SEAM BRUSH

- Material ■ Body: PP, trim: PBT\*
- Design ■ Trim height 42 mm  
 ■ Pointed fibre ends  
 ■ Semi-hard bristle material, white

Dimension (length in mm)	Item no.
410 x 50 x 40	200833



\* PP = Polypropylene, PBT = Polybutylene terephthalate



## BREATHING MASK

- Design
- Liquid-resistant surgical mask
  - Ideal protection from airborne infectious agents and bioaerosols



Package contents	Item no.
30 pcs	142304

## BREATHING MASK WITH VALVE

- Design
- Offers reliable protection from harmful, low-toxicity substances up to 30x the STEL
  - Liquid-repellent material
  - Individually packaged from hygiene



Package contents	Item no.
20 pcs	142305



## EXAMINATION GLOVE

- Design
- Made from nitrile
  - Resistant to chemicals & solvents
  - Textured fingertips
  - Rolled cuff at the wrist joint

Colour	Size	Package contents	Item no.
Blue	S, M, L, XL	200 pcs	142306

## VISITOR SAFETY GLASSES



1

## PE SHOE COVERS



2

## PP SHOE COVERS



3

Fig.	Description	Colour	Package contents	Size	Item no.
1	Visitor safety glasses with very large polycarbonate panoramic "lenses"; can also be used over prescription glasses	Transparent	1 pack = 12 units	One size fits all	61030
2	Impervious to liquid, with welded seams, and an opening with welded-in elastic. With nubs on the soles	Blue	1 pack = 100 units	L x W (mm) 420 x 160	61032
3	Top opening with integrated elastic, with rubberised soles	White	100 pcs	L x W (mm) 440 x 160	61034-W
		Blue			61034-B



## PROTECTIVE CLOTHING



1

Visitor set

2

Overall

3

Clean room coat

Fig.	Description	Package contents	Size	Item no.
1	Visitor set consists of an inspection coat and cap, practically and hygienically sealed together inside a single bag	100 pcs	One size fits all	61038
2	Suit with single-piece body, long sleeves, and long trouser legs, and a hood sewn on with an overlock seam, packaged individually in a plastic bag	50 pcs	L	61042
2			XL	14230
2			XXL	14238
3	Disposable coat with rubber tapes on sleeves and press studs	50 pcs	S-M 100 cm	14239
3			L-XL 105 cm	61044



1 Cap head cover



2 Beret head cover



3 Clean room hood



4 Beard cover

Fig.	Description	Colour	Package contents	Size	Item no.
1	Cover made from non-woven fabric with latex-free elasticated closure	White	100 units (box)	One size fits all	61010
		Blue	100 units (box)		14231
2	Cover made from soft non-woven fabric in a beret design, external closure uses elastic integrated into an overlock seam	Blue, green, or white	200 pcs (bag)	53 cm	61012
				61 cm	61014
3	Hood made from anti-static-treated, air-permeable non-woven fabric with approx. 12 cm shoulder cover	White	50 pcs	One size fits all	61015
4	Beard cover with latex-free elastic all-round, hemmed into an overlock seam, as well as an elastic head strap	White	100 pcs	One size fits all	61020



## HYGIENE / AIR LOCK STAINLESS STEEL BENCHES

### BENCH

- Material ■ AISI 304
- Equipment ■ Bottom frame made from square tubes with plastic screw feet

#### Seat surface options:

- Type 1 ■ Closed with continuous white plastic covering, thickness: 30 mm (not pictured)
- Type 2 ■ With white plastic slats, width x thickness: 115 x 30 mm (see photo)



Length (mm)	Seat depth (mm)	Seat height (mm)	Type	Covering	Item no.
1,000	400	500	2	With slats	83585
1,000	400	500	1	Closed	83591
1,500	400	500	2	With slats	83586
1,500	400	500	1	Closed	83592
2,000	400	500	2	With slats	83587
2,000	400	500	1	Closed	83593

### SIT-OVER BENCH WITH SHOE SHELF

- Material ■ AISI 304
- Equipment ■ Closed stainless steel seat surface with 40 mm folded edge on all sides
- Bottom closed with metal sheeting
- 20 mm rolled edge on the long sides
- Bottom structure closed at the sides with 2 shoe shelves one over the other, each accessible from one of the long sides (Z-shape)
- On a 100 mm-high base



Length (mm)	Seat depth (mm)	Seat height (mm)	Item no.
1,000	500	500	83596
1,200	500	500	83597
1,400	500	500	83598
1,600	500	500	83599
1,800	500	500	83600

### SIT-OVER BENCH WITH SHOE SHELF (OPEN)

- Material ■ AISI 304
- Equipment ■ Closed stainless steel seat surface with 40 mm folded edge on all sides
- 20 mm rolled edge on the long sides
- Available with either 1 or 2 shelves



Length (mm)	Seat depth (mm)	Seat height (mm)	Item no. With 1 shelf	Item no. With 2 shelves
1,000	500	500	83601	83606
1,200	500	500	83602	83607
1,400	500	500	83603	83608
1,600	500	500	83604	83609
1,800	500	500	83605	83611





## MATERIAL PASS-THROUGH AIR LOCK

GMP material air lock, active and passive



The material pass-through is the professional barrier between clean and unclean rooms. It is the effective solution for transferring different materials and products in and out both rapidly and efficiently. The scientifically-proven airflow concept inside the air lock guarantees absolute purity around the product.

The active material air lock is equipped with a control module on top. The control module itself incorporates two filter-mounting elements. The air supply outlet is connected directly to the inner chamber. End filters inside the chamber ensure perfect clean room conditions. The exhaust air is extracted through the double-wall construction. An exhaust air filter unit, which can be equipped with a HEPA filter, is installed right on the outlet from the air lock. The air lock can be supplied in the form of a straight pass-through air lock or as an angled air lock.

The layout and design of the passive material air lock is identical. The difference is that the passive pass-through is not ventilated. The air lock control system is freely programmable.

### General technical features/characteristics:

Material housing and chamber surface	■ Stainless steel AISI 304, brushed
Electrical connection data	■ 230 VAC/50 Hz
Supply and exhaust air connection data	■ DN 100
Supply and exhaust air filter	■ HEPA H 14 filter
Air lock control traffic light system	■ Freely programmable
Dimensions of the inner chamber	■ Freely definable
Exhaust air regulation	■ Manually via damper
Supply/exhaust air filter replacement	■ From chamber



# OUR PRODUCTS FIT TO THE CUSTOMER – INSTEAD OF THE REVERSE



**PLASTICS PRODUCTS**



## PLASTIC TRANSPORT CONTAINERS

### Design

- High chemical and thermal resistance
- Flexible, shatter-resistant
- Shock and impact-resistant, maintenance-free
- No corrosion
- Smooth, wear-resistant surface



Fig.	Capacity (litres)	External dimensions in mm (over rim)	Internal dimensions (mm)	Material	Colour	Item no.
1	10	445 x 345 x 90	410 x 310 x 85	Polypropylene	Natural	100141
1	9	562 x 355 x 64	502 x 308 x 61	Polypropylene	Natural	100109
2	31	550 x 450 x 163	480 x 410 x 160	HDPE	Natural	100131
2	28	668 x 445 x 122	602 x 408 x 119	HDPE	Natural	100128
3	50	660 x 450 x 225	602 x 408 x 221	HDPE	Natural	100150
3	96	668 x 452 x 412	602 x 408 x 408	HDPE	Natural	100196

Fig.	Accessories	Item no.
4	Lid, 620 x 420 mm, with stacking edge, suitable for containers: item no. 100128, 100150, 100196	100100



Fig.	Capacity (litres)	External dimensions (mm)	Internal dimensions (mm)	Material	Colour	Item no.
5	35	600 x 355 x 210	530 x 315 x 210	HDPE	Natural	100135
6	23	460 x 328 x 202	394 x 295 x 199	HDPE	Natural	100123

Fig.	Accessories	Item no.
7	Lid, 460 x 320 mm, suitable for containers 100123	100101
—	Label holder for all containers with ribs on the outside, galvanised spring steel	100102
8	Dolly, aluminium frame with polyamide castors, load capacity 400 kg for container item no. 100128, 100150, 100196	100103
—	Dolly, frame made from stainless steel, dim. 630 x 435 mm, made from angled steel, 4 castors, 2 of which with brakes, wheel diameter 125 mm, loading capacity 150 kg, solid rubber tyres, blue/grey – please indicate the desired box no.	101104



## PLASTIC DRUMS

Design

- Meets all hygiene standards
- Extremely robust and durable
- Generally available in white
- Lids are available for all of the drums
- All of the drums can be used within a temperature range from – 30 to + 70°C



Fig.	Capacity (litres)	External dimensions (ø x H) in mm	Internal dimensions (ø x H) in mm	Design	Item no.	Lid	Wheeled frame with handle
1	40	420 x 445	370 x 425	Var. a + b	100240	100340	100440
1	50	420 x 540	370 x 520	Var. a + b	100250	100350	100450
3	75	515 x 530	455 x 512	Var. a + b	100260-C	100360	100460
3	110	515 x 733	460 x 725	Var. a + b	100270	100370	100470
2	200	730 x 670	665 x 655	Var. a + b	100280	100380	100480

Design: [a](#) Stackable one inside another [b](#) Stackable one on top of another with lids

## LARGE PLASTIC CONTAINERS



Fig.	Capacity (litres)	Exterior dimensions (L x W x H) in mm	Interior dimensions (L x W x H) in mm	Design	Item no.	Lid	Stainless steel wheel set
1	125	505 x 505 x 715	440 x 440 x 695	Variant a + b	100510	100610	–
2	210	790 x 605 x 685	725 x 540 x 575	Var. a + b, 4 feet	100520	100620	100720
3	210	790 x 605 x 685	725 x 540 x 575	Var. a + b, with bung hole & plug, 4 feet	100530	100630	100730
3	300	1,200 x 780 x 580	985 x 705 x 470	Var. a + b, 5 feet	100540	100640	–
3	400	945 x 725 x 830	875 x 655 x 705	Var. a + b, 5 feet	100550	100650	100750
3	400	945 x 725 x 830	875 x 655 x 705	Var. a + b, with bung hole & plug, 5 feet	100560	100660	100760
4	650	1,195 x 905 x 835	1,120 x 830 x 705	Variant a, 5 feet	100570	100670	100770
4	650	1,195 x 905 x 835	1,120 x 830 x 705	Var. a, with bung hole and plug, 5 feet	100580-C	100680	100780
Accessories							
Drainage ball valve for 210 l, 400 l and 650 l container							100500
Replacement plug							100501

Design: [a](#) Stackable one inside another [b](#) Stackable one on top of another with lids



### PLASTIC HAZARDOUS GOODS CONTAINER



- Certified hazardous goods container, approved for storing and transporting hazardous goods
- GGVSE (Dangerous Goods Ordinance, Road and Rail) approval process, with foam insert in lid (optionally available on the bottom)
- Carry straps made from textile fibres on both narrow sides
- Fasteners and tear-resistant textile fibre straps ensure that the container remains properly closed even during transport
- Colour of container/lid: silver grey/anthracite
- Gross maximum dimensions for:
  - Container size 400 x 300: Packaging Group I 13 kg and Packing Group II-III 19 kg
  - Container size 600 x 400: Packaging Group I 30 kg and Packing Group II-III 45 kg

Length (mm)	Width (mm)	Height (mm)	Weight (kg)	Item no.
400	300	233	2.2	36204
400	300	285	2.5	36212
400	300	338	3.0	36205
600	400	235	4.1	36201
600	400	293	3.8	36642
600	400	340	5.0	36202
600	400	440	5.5	36209

When ordering, please also specify the container height and diameter.



### DIVIDER SET

- Design ■ Plastic, for dividing the container into different-sized compartments
- Divisions ■ According to customer specifications (please specify the container height and diameter)

Divisions for container basic dimensions (mm)	Item no.
400 x 300	36210
600 x 400	36211

When ordering, please also specify the container height and diameter.





## HYGIENIC PALLET WITH NON-SLIP EDGE

- Material ■ HDPE, biologically stable material
- Design ■ Use in: chemical and pharmaceutical industries
- Easy to clean
- Completely sealed surface with no indentations
- Also available with centre mark
- With 3 lengthways runners
- For use from -25 to +40°C or 100°C during steam or hot water cleaning
- Colour: white



Dimensions (L x W x H) in mm	Approx. unladen weight (kg)	Loading capacity (kg), static	Loading capacity (kg), dynamic	Loading capacity (kg), high rack	Item no.
1,200 x 800 x 160	18	4,800	1,200	1,000	110100
1,200 x 1,000 x 175	25	5,500	1,500	1,000	100110

## EURO PALLET H1

- Material ■ New HDPE material
- Design ■ Ideal for use in hygienic areas
- Strong and durable
- System pallet used in conjunction with Euro boxes
- 3 welded runners
- For use from -40 to +70°C
- Colour: grey
- Variant 1: with restraint on outside and in centre
- Variant 2: with restraint on outside but not in centre



Variant	Approx. unladen weight (kg)	Dimensions (L x W x H) in mm	Loading capacity (kg), static	Loading capacity (kg), dynamic	Loading capacity (kg), high rack	Item no.
1	18	1,200 x 800 x 160	5,000	1,250	1,000	100200
2	18	1,200 x 800 x 160	5,000	1,250	1,000	100210

## ESD PALLET

- Design ■ For protection for electrostatic discharge
- Pallet has no metal reinforcement
- With 3 lengthways runners

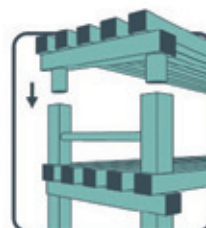
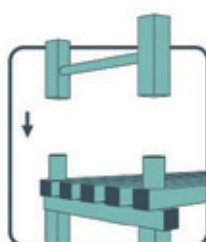


Dimensions (L x W x H) in mm	Approx. weight (kg)	Loading capacity (kg), static	Loading capacity (kg), dynamic	Item no.
1,200 x 800 x 160	15	6,000	1,500	100301



## PLASTIC SHELVING

- Material
- Made entirely from synthetic, high-quality, cadmium-free plastic
  - Always hygienic, easy to clean
- Design
- Very quick and easy boltless assembly
  - Temperature range: from -40°C to + 80°C
  - Resistant to moisture, rust, table salt, and acids
  - Approved for the food industry, meets HACCP hygiene standards
  - Loading capacity: 200 kg per running metre of shelving
  - Can be custom produced to given dimensions
  - Corner solutions possible
  - Pricing based on running metres, deliveries with custom dimensions at no extra charge!
  - End caps also available in red upon request
  - Tested and certified according to RW-TÜV; GS mark





## STERILE GOODS BOXES MADE OF ALUMINIUM

Design

- For sterilisation and sterile storage
- Made from anodised aluminium
- Perforated lid



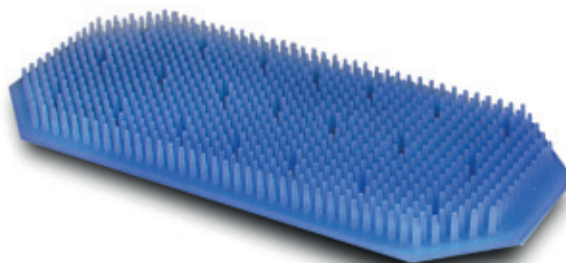
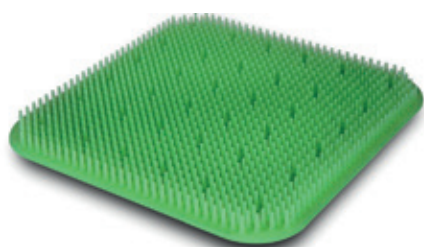
Size	Exterior dimensions (L x W x H) in mm	Interior dimensions (L x W x H) in mm	Bottom	Item no.
1/2	285 x 280 x 100	262 x 265 x 84	Unperforated	10629
			Perforated	10630
	285 x 280 x 135	262 x 265 x 115	Unperforated	10631
			Perforated	10632
	285 x 280 x 150	262 x 265 x 130	Unperforated	10633
			Perforated	10634
	285 x 280 x 200	262 x 265 x 180	Unperforated	10635
			Perforated	10636
	285 x 280 x 260	262 x 265 x 240	Unperforated	10637
			Perforated	10638

Size	Exterior dimensions (L x W x H) in mm	Interior dimensions (L x W x H) in mm	Bottom	Item no.
1/1	580 x 280 x 100	550 x 265 x 84	Unperforated	10613
			Perforated	10614
	580 x 280 x 135	550 x 265 x 115	Unperforated	10615
			Perforated	10616
	580 x 280 x 150	550 x 265 x 130	Unperforated	10617
			Perforated	10618
	580 x 280 x 200	550 x 265 x 180	Unperforated	10619
			Perforated	10620
	580 x 280 x 260	550 x 265 x 240	Unperforated	10621
			Perforated	10623

Please also state the desired door colour when making your order: grey, yellow, red, blue, green, black. Other sizes and designs upon request.

## SILICONE MATS

Ideal for separating utensils in steri boxes during autoclaving



Dimensions (L x W) in mm	Green item no.	Blue item no.
270 x 125	142038	142045
245 x 245	142039	142046
220 x 230	142041	142048
380 x 230	142042	142049
440 x 230	142043	142050-E
500 x 230	142044	142051



## PLASTIC COLLECTING TROUGH WITH RUNNERS UNDERNEATH



- Material ■ Polyethylene (PE)
- Design ■ Collecting troughs with general building inspectorate licence / CE-compliant
- With runners underneath
- For max. two 200 litre drums
- For storage of water-polluting liquids
- Collecting trough optionally available with galvanised or PE grid
- Loading capacity: 500 kg/m<sup>2</sup>
- Collecting volume: 200 litres
- Dimensions (W x D x H) in mm: 1,230 x 830 x 420

Design	With grid	Capacity (200-litre drum)	Weight (kg)	Item no.
Collecting trough with runners	—	1 x 200-litre drum + small container	25	58000
Collecting trough with runners	Galvanised	2 x 200-litre drums	40	58002
Collecting trough with runners	Polyethylene	2 x 200-litre drums	49	58004



## COLLECTING TROUGH WITH PEDESTAL



- Material ■ Polyethylene (PE)
- Design ■ For one 1000-litre IBC
- Collecting troughs with general building inspectorate licence / CE-compliant
- For storage of water-polluting liquids
- Complete corrosion protection
- With bottom clearance – ideal for transporting the empty trough around a company site by lift truck or forklift
- Pedestal is a rimmed storage platform which prevents the IBC from shifting
- Loading capacity: 2,000 kg
- Collecting volume: 1,000 litres
- Optionally available with an integrated siphoning area (see small photo)

Design	Dimensions (W x D x H) in mm	Loading capacity (kg)	Item no.
With pedestal	1,380 x 1,580 x 760	2,000	58006
With pedestal and integrated siphoning area	1,380 x 1,800 x 760	2,000	58008



## HAZARDOUS MATERIALS SHELVING UNIT WITH COLLECTING PANS

- Material**
- Galvanised steel, pans made from polyethylene (PE) Design
  - Hazardous materials shelving unit for storage of water-polluting liquids of all hazard classes
  - Solid construction with reinforcing cross beam
  - Plastic pan has high resistance to aggressive chemicals
  - Shelf load per level 200 kg (evenly distributed)
  - Storage levels height-adjustable with a pitch of 25 mm
  - Custom shelf extensions possible
  - Available either with a galvanised grid overlay or one made from PE



Design	Storage level	Dimensions (W x D x H) in mm	Capacity (litres)	Item no.
Starting shelf unit	4 x PE pan	1,060 x 640 x 2,000	4 x 28	58101
Additional unit	—	1,060 x 640 x 2,000	4 x 28	58102
Starting shelf unit	4 x PE pan	1,360 x 640 x 2,000	4 x 36	58103
Additional unit	—	1,310 x 640 x 2,000	4 x 36	58104
Grid overlay	Polyethylene	—	—	58105
Grid overlay	Galvanised	—	—	58106

## PLASTIC HAZARDOUS MATERIALS STORAGE CABINET

- Material**
- Polyethylene (PE) for storing oils, acids, & bases
- Design**
- For storing water-polluting liquids of all hazard classes
  - For indoor and outdoor installation, rainwater drains off to the rear
  - Integrated collecting trough with support profiles for adjusting to a Euro pallet
  - Corrosion-free, weather-resistant construction
  - Integrated fork pockets for lift truck and high-lift truck access
  - Doors with bar lock
  - Prepared for anchoring to the floor
  - Dimensions (H x W x D) in mm: 1,980 x 1,560 x 1,080



Variant

- Type A for 2 x 200-litre drums
- Type B with shelving system: galvanised shelving rack with 3 shelves (loading capacity for each level: 250 kg)

Design	External dimensions (W x D x H) in mm	Internal dimensions (W x D x H) in mm	Capacity (litres)	Item no.
Type A – for 2 drums	1,560 x 1,080 x 1,980	1,370 x 910 x 1,500	250	58107
Type B – with shelving system	1,560 x 1,080 x 1,980	1,370 x 910 x 1,500	245	58108

Accessories	Dimensions (W x D x H) in mm	Used for	Item no.
Mounting set for anchoring to the floor	—	Type A and Type B	58110





## PLASTIC SCOOPS, STERILE

- Material ■ Polystyrene (PS)
- Design ■ For clean rooms, individually pre-sterilised and packaged – can be used straight out of the bag
- No cleaning necessary
- FDA & EU 10/2011 compliant
- Complete batch traceability
- BSE/TSE-free
- Suitable for use in ATEX zones
- Colour: white
- 100 units/pack

Also available in blue and red upon request. Please append the colour code B for blue and R for red to the item number.

Capacity (ml)	Item no.
60	58111
125	58112
500	58113
1,000	58114
2,500	58115

## PLASTIC SPOONS, STERILE

- Material ■ Polystyrene (PS), Polypropylene (PP)
- Design ■ For clean rooms, individually pre-sterilised and packaged – can be used straight out of the bag
- No cleaning necessary
- Ideal for sampling small quantities of powder
- Produced from food-safe materials
- 100 units/pack
- FDA & EU 10/2011 compliant
- BSE/TSE-free
- Suitable for use in ATEX zones
- 100 units/pack

Total length (mm)	Red (PS) item no.	White (PS) item no.	Blue (PP) item no.
173	–	58117	–
185	58116	58118	58119





## MICRO SCOOPS, STERILE

- Material ■ Polystyrene (PS)
- Design ■ For clean rooms, individually pre-sterilised and packaged – can be used straight out of the bag
- Ideal for handling small amount of powders and granules
- Small blade sizes make it possible to remove samples from very small containers such as vials
- No cleaning necessary
- FDA & EU 10/2011 compliant
- Complete batch traceability
- BSE/TSE-free
- Suitable for use in ATEX zones
- Colour: white
- 100 units/pack



Capacity (ml)	Pick-up channel width x length (mm)	Total length (mm)	Item no.
0.5	6 x 40	170	58120
2.0	13 x 40	170	58121

## SPATULAS, STERILE

- Material ■ Polystyrene (PS), Polypropylene (PP)
- Design ■ For clean rooms, individually pre-sterilised and packaged – can be used straight out of the bag
- No cleaning necessary
- With specially developed, rounded handle and sturdy blade, heavy-duty quality
- 100 units/pack
- FDA & EU 10/2011 compliant
- Complete batch traceability
- BSE/TSE-free
- Suitable for use in ATEX zones
- 100 units/pack



Pick-up channel width x length (mm)	Total length (mm)	Red (PS) item no.	White (PS) item no.	Blue (PP) item no.
19 x 150	230	58122	58124	58126
19 x 250	330	58123	58125	–



### POWDER SAMPLE TAKERS, STERILE

- |          |   |
|----------|---|
| Material | ■ Polyethylene (HDPE)   |
| Design   | ■ For clean rooms, individually pre-sterilised and packaged – can be used straight out of the bag |
|          | ■ Ideal for picking up representative samples   |
|          | ■ Available in two lengths and four sample volumes  |
|          | ■ FDA & EU 10/2011 compliant  |
|          | ■ Suitable for use in ATEX zones  |
|          | ■ Colour: white   |
|          | ■ 20 units/pack (box)   |

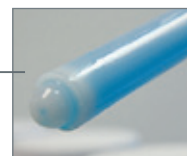
Sample volume (ml)	Diameter $\varnothing$ (mm)	Total length (mm)	Item no.
1	21	500	58127
1	21	1,000	58128
5	21	500	58129
5	21	1,000	58130
10	21	500	58131
10	21	1,000	58132
20	21	500	58133
20	21	1,000	58134





## LIQUID SAMPLE TAKERS, STERILE

- Material
- Polyethylene (HDPE)
- Design
- For clean rooms, individually pre-sterilised and packaged – can be used straight out of the bag
  - Simplified sampling of liquids, creams, and pastes
  - Two models available:
    - Sample-taking hole  $\varnothing$ : 1.0 mm for liquids
    - Sample-taking hole  $\varnothing$ : 10 mm for viscous media
  - FDA & EU 10/2011 compliant
  - Complete batch traceability
  - BSE/TSE-free
  - Suitable for use in ATEX zones
  - Colour: white
  - 20 units/pack (box)



### Hole $\varnothing$ 1.0 mm

Max. sample volume (ml)	Diameter $\varnothing$ (mm)	Total length (mm)	Item no.
100	21	500	58135
190	21	1,000	58136
300	21	1,500	58137

### Hole $\varnothing$ 10 mm

Max. sample volume (ml)	Diameter $\varnothing$ (mm)	Total length (mm)	Item no.
100	21	500	58138
190	21	1,000	58139
300	21	1,500	58140





# GENERAL DELIVERY CONDITIONS

## 1. General information

- 1.1 Our offers are always non-binding. In any case, the delivery contract is only concluded upon receipt of a written order confirmation from us.
- 1.2 Business relations with our customers are governed exclusively by the following conditions, even where the customer discloses or has previously disclosed their own – potentially deviating – terms and conditions of business. These alternative conditions are hereby expressly rejected.
- 1.3 Assembly/installation to be carried out by the customer on items supplied by us is governed by the document "Special conditions for plant engineering".
- 1.4 Our employees or other assigned personnel are not entitled or authorised to make verbal agreements outside of the contents of the contract as laid down in writing. Therefore the contents of the contract includes only that which has been put down by us in writing as having been agreed upon, or is confirmed as such.
- 1.5 The information provided in catalogues, brochures, circulars, advertisements, figures, and price lists as to weight, dimensions, capacity, price, performance, and similar are only intended as a guideline. They shall become binding by being referred to explicitly in the contract.

## 2. Delivery time

- 2.1 An agreed delivery period is only to be taken as an approximation, and shall not be deemed exceeded until a additional period of two weeks has elapsed. It begins on the day the order confirmation is sent, and is deemed to have been met provided that the goods have left our premises by the end of the delivery period or the customer has been notified that the goods are ready for dispatch.
- 2.2 The delivery period shall be extended – including in the course of an existing delay to delivery – reasonably in the event of unforeseeable impediments, which we are unable to avoid despite reasonable care being taken in accordance with the circumstances of the case. This applies particularly to disruptions to operations – both in our own company as well as in third-party companies on which we depend for production and transport – caused for example by war, strikes, lock-outs, riots, coal and energy supply issues, failure of transport equipment, labour restrictions, and all other cases of force majeure. We will inform the customer of such impediments immediately as they become known to us, provided that the impediment is not already generally known.
- 2.3 The agreed delivery period shall also be extended by any period of time in which the customer is in default of their obligations resulting from this or any other contract with us. This shall have no impact on our remaining rights in respect of the default of the customer.
- 2.4 The customer shall only be entitled to withdraw from the contract due failure to comply with the delivery period if they have set a reasonable additional period in writing, taking account of the rules under 2.2. An additional two weeks is deemed to be a reasonable period. Once this period has elapsed, the customer may assert their statutory rights, provided that – if the default of performance can be traced back to simple negligence on our part – our compensation obligation is limited to the amount of the purchase price, and to the losses incurred from having to obtain the goods by other means. Further claims are excluded.
- 2.5 If the contract is changed after sending of our order confirmation, this shall invalidate the originally agreed delivery period. Instead, a new delivery period shall commence with our sending of the confirmation of the change to the contract, according to the new order confirmation.
- 2.6 In case of premature delivery, the time of this delivery – and not the time originally agreed upon – is authoritative.
- 2.7 In any case, correct and punctual delivery from our own suppliers is a prerequisite for maintaining delivery times.

## 3. Prices

- 3.1 Orders for which not fixed prices are explicitly agreed upon are billed at the prices valid on the day of delivery.
- 3.2 If prices have been agreed, we reserve the right to demand a corresponding adjustment to the agreed price in response to any changes in materials prices, wage costs, freight rates, energy costs, VAT, or customs charges, unless the delivery is to occur within six weeks of sending the order confirmation (for non-merchants, four months). Where cost increases occur in the factors relating to price adjustments, especially those determined by raw materials procured from the supplier, we may increase the agreed price accordingly under the above conditions, provided that the cost increases have occurred by the delivery date.
- 3.3 All changes in the agreed currency or exchange rate to the EURO, which occur after the contract is concluded, shall be borne by the customer.
- 3.4 The specified prices are for delivery ex works, exclusive of packaging and freight costs, and plus the respective statutory VAT.

## 4. Payments

- 4.1 Payments must be made in the currency indicated, within 30 days of the invoice date, with no cash discount offered. Once a period of 30 days from the invoice date has elapsed, provided that a reminder is issued giving a deadline of one week for payment and this subsequent deadline has elapsed without effect, we shall be entitled to charge interest on arrears in the amount of 5% above the current discount rate of the Deutsche Bundesbank, unless we can prove higher damages due to the default or the supplier is able to prove losses of a lesser amount.
- 4.2 Bills of exchange, cheques and other instructions of payment will only be accepted upon prior agreement, on account of performance, without guarantee for protest, and subject to their discountability. Discount charges shall be calculated on the day the invoice falls due. The costs for collection, bank interest and charges shall be borne by the customer.
- 4.3 For larger order volumes, we may demand pre-payments or appropriate instalments for the partial performances rendered.
- 4.4 The customer shall not be entitled to offset counterclaims not recognised by us, unless such counterclaims have been legally recognised in favour of the customer. Furthermore the customer has no right to delay payments for performances not based on the same contractual relationship.

- 4.5 Payments will be accounted to the respective older receivable amount due to us by the customer, even if the payment is intended for certain designated goods.

- 4.6 If we become aware of circumstances that lead to the conclusion that the customer has low creditworthiness, then we have the right to demand the immediate provision of sufficient security or payment of the receivable amount. If the customer is in arrears with a not insignificant portion of their obligations, we are entitled to declare that all our claims against the customer are due immediately.

## 5. Delivery, dispatch, freight, transfer of risk

- 5.1 Our written order confirmation is solely binding for the execution of the order. The dimensional, weight, and performance information that it contains, as well as the figures, are only to be taken as non-binding approximations, unless they have been explicitly identified as binding; we especially reserve the right to make technical modifications in the interests of improving our products.
- 5.2 If the goods are dispatched at the request of the customer, once they are handed over to the dispatch agents of the customer – however no later than upon leaving the supplier's factory or warehouse – the risk for accidental loss and deterioration of the goods is transferred to the customer, even if they are not dispatched from the place of performance.
- 5.3 If the goods are ready for dispatch and dispatch or acceptance are delayed for reasons for which we are not responsible, then the risk is transferred to the customer upon their receipt of the notification of readiness for dispatch. Our duty to provide this notification is sufficed by sending it by fax and obtaining the receipt from the fax protocol.
- 5.4 If the customer does not accept the delivery within a reasonable period of time after notification of completion or promptly upon advice of dispatch, we are entitled to either store the goods in our own warehouse at the cost and risk of the customer, or to put them into storage at a third-party haulier or warehouse. The same applies if the handover or dispatch of the goods is postponed at the customer's wishes or is not possible for an extended period due to circumstances for which we are not responsible.
- 5.5 If for certain products transport insurance has not been contracted by us on the purchaser's account, we will only obtain such insurance at the customer's request and expense.
- 5.6 If the customer delays acceptance of the goods, in addition to our rights stemming from § 326 BGB (German Civil Code), we have the right to partially withdraw from the contract and to demand compensation for the remaining part.
- 5.7 We are entitled, to a reasonable extent, to undertake partial deliveries of the total order and invoice for each separately.
- 5.8 Since we procure some of the goods we sell from other firms, we must reserve the right to withdraw from the contract with the customer if and insofar as our sub-supplier is released from their own delivery obligation under law or due to their business relationship with us. If this occurs, we will notify the customer without delay.

## 6. Retention of title

- 6.1 The supplied goods remain our property until the customer has paid all current and future receivables from the business relationship with us, especially including any current account balance. Payment by bill of exchange or cheque only counts as a payment once the paper has been cashed. While the goods are subject to retention of title, the customer shall bear the risk for its loss and deterioration until they have paid in full.
- 6.2 We retain all rights, especially property rights, copyrights, and similar, to technical drawings, installation manuals, and other documents supplied or otherwise handed out to the customer, and these are not transferred to the customer. The customer is not entitled to pass these documents on to third parties, unless this is strictly necessary to fulfil the purpose of the contract.
- 6.3 Our ownership extends to new goods or items produced by processing, mixing, blending, or filling. Until the customer has paid their outstanding receivables in full, any machining, processing, blending, or combining of the goods subject to retention of title is done on our behalf. Where our goods are combined with goods from a third party who retains their own ownership rights, then we shall acquire co-ownership in the proportionate amount. The customer is obligated to secure and keep safe the goods subject to retention of title on our behalf. The customer must notify us immediately by fax in advance of a seizure or any other infringement of their or our rights by a third party.
- 6.4 The customer is entitled and authorised to resell the goods subject to retention of title in the course of normal operations, however not to pledge them or transfer them by way of security, provided that they ensure the claim from the resale is transferred to us. To this end, the customer hereby transfers the purchase price claims due to them from the resale of the goods to us, together with all ancillary rights, to the extent stipulated in point 6.5. If the purchase price claim from the resale is added to an ongoing invoice (current account), the customer hereby transfers their claims to payment of the amount of the following statement balance to us. We hereby accept this transfer.
- 6.5 Regardless of this transfer, which should not initially be disclosed to the customer's third-party purchaser, the customer is entitled to collect the transferred claims, provided that they meet their obligation to us, and do not suffer from deterioration of assets. However, we have the right, at any time, to revoke authorisation to collect this claim and to assert the claim ourselves. On demand, the customer must issue an individual declaration of transfer, show it to the third-party purchaser, and confirm to or notify them of the transfer. Moreover, the customer must provide us with all of the information necessary to assert the transferred claims.
- 6.6 If the goods subject to retention of title are sold on with other goods, then the rule laid out under points 6.4 and 6.5 only applies in the amount of the value of the retained goods used by us as a security and which is sold on with the other goods.

- 6.7 The rights granted to us according to point 6.1 and 6.3 as well the claims transferred to us according to point 6.4 serve – up to the amount of the total outstanding claims plus 15% – as a security for all claims owed to us from the business relationship. If the realisable value of the securities exceeds the claims being secured by more than 15%, we shall release securities of our choosing when requested to do so by the customer.

- 6.8 The customer must inform us without delay of any physical or legal access to the goods subject to retention of title by third parties or to the claims already transferred, by submitting to us the documents necessary for an intervention. In the same way, they must inform us immediately in writing of any damage or loss occurring to good subject to retention of title. In the event of access by third parties, the seizure report or writ of seizure must be submitted to us.

- 6.9 The authorisation of the customer to sell on the goods subject to retention of title in the course of ordinary business operations is void if the customer is in default of their obligation, if they are unable to pay, or if judicial insolvency or bankruptcy proceedings, or similar, are filed against them.

## 7. Warranty

- 7.1 If the supplied goods are defective or lack their promised characteristics, the customer must notify us of this in writing: for obvious defects, immediately but no later than 10 days after receipt, for defects not immediately apparent, without delay upon their discovery, but no later than six months after receipt, even where reference samples had previously been sent to the customer.
- 7.2 Where prompt notification of defects is given, we have the right to make a repair, supply a replacement, or refund an amount equal to the value of the goods, at our own discretion. If we fail to exercise this right within a reasonable period of time to be determined by the customer, then the customer is entitled to a price reduction or to withdraw from the contract. If we opt to make a repair and this fails, then the customer also has the right to termination and to a price reduction.
- 7.3 Further warranty claims and claims for damages of any kind, including consequential loss, are excluded insofar as that do not rest on the lack of any expressly warranted characteristic, and provided that they cannot be traced back to intentional or grossly negligent behaviour on our part.
- 7.4 Differences in colour on subsequent deliveries are excluded from any warranty provided.
- 7.5 If no written guarantee is issued for individual items, we only provide a guarantee on delivery items if an explicit written guarantee promise exists.

## 8. Legal relationships, place of performance, and place of jurisdiction

- 8.1 The contractual relationships are solely subject to the laws of the Federal Republic of Germany. The application of the laws on the international sale of goods is excluded.
- 8.2 The place of performance for deliveries and payments is exclusively Alsfeld, Germany, unless we explicitly define a different place of performance.
- 8.3 If the customer if a merchant not among the tradesmen identified in § 4 HGB (German Civil Code), a legal entity under public law, or a special fund under public law, then the place of jurisdiction is Gießen, Germany. Incidentally, Gießen is also the place of jurisdiction if the customer relocates their place of residence or habitual abode outside of the Federal Republic of Germany after the contract is concluded, or if their place of residence or habitual abode is unknown at the time the complaint is filed.
- 8.4 According to § 26 of the German Federal Data Protection Act (BDSG), we hereby notify you that your data will be stored using EDP systems.

## 9. Severability clause

- 9.1 Should individual provisions of these sale and delivery conditions be invalid, this shall have no effect on the validity of the remaining provisions.



**Solpharma Technologies**  
Barcelona - Spain

+34 936 222 097  
solpharma@solpharma.com

**[www.solpharma.com](http://www.solpharma.com)**

