

MOBILE LIFTER MAXI

Max 300 kg



Our heavy duty lifters are

just pure power!



Svenema AB
Källbäckstrydgatan 8
507 42 Borås, Sweden
+46 (0)33-14 05 70
info@svenema.se
www.svenema.se



TABLE OF CONTENT



Svenema develop, design and manufactures custom-made ergonomic lifters.

Our focus is to manufacture mobile lifters with an ergonomic design for material handling in the pharmaceutical environment.

We have provided the pharmaceutical industry with mobile lifters since 1995.

4 ABOUT THE MAXI
Mobile lifter MAXI is our most powerful lifter.

6 EXAMPLE OF MODULES
Inspirational pictures of what goods you can handle with the mobile lifter MAXI.

12 TECHNICAL DATA
*Max 300 kg.
Max lifting height 2000 mm.*

13 WHY CHOOSE SVENEMA?
*Always in stainless steel 304 or 316.
Ra 0,8 or better.*

14 GALLERY
Some of the custom-made mobile lifters we've designed and manufactured through the years.





MAX 300 KG

MAXXI



ABOUT THE MAXI

Mobile lifter MAXI is our most powerful lifter. It has two columns and robust bearing that can lift items up to 300 kg.

Despite its robust construction, the MAXI lifter has the same hygienic design as all of our other lifters.

If you have some really heavy goods, you can choose to have an electric driven wheel, which will make the lifter easier to move.

Mobile lifter MAXI is the real deal if you want to move, lift and tilt heavy rolls, drums, IBC tanks, etc.





Handling of IBC

- Electrical clamp.
- The robust design makes it able to dock the IBC to an active valve and hold it during the process.
- Choose between manual, electrical or no tilt.
- You can choose to have a remote control to be able to operate from the side of the lifter.



Manual clamp

- Manual clamp for drums.
- Adapter is available if you need to lift different sizes of drums.
- Can be equipped with manual or electrical tilt.
- Due to the heavy drum that this lifter will handle, we have used a driven wheel for a more ergonomic movement.



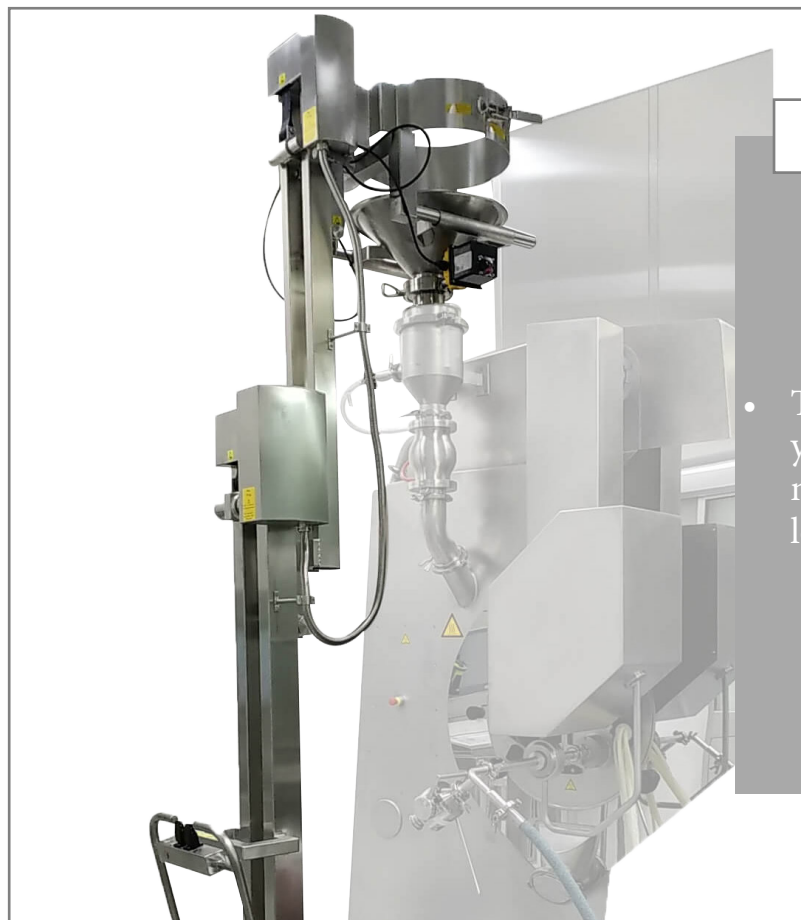
Advanced drumtilt

- To handle a drum of 220 kg.
- Electrical clamp with funnel.
- Electrical tilt sideways.
- Choose between manual or electrical valve.
- Very thought-out safety functions.
- Funnel can easily be removed for cleaning.



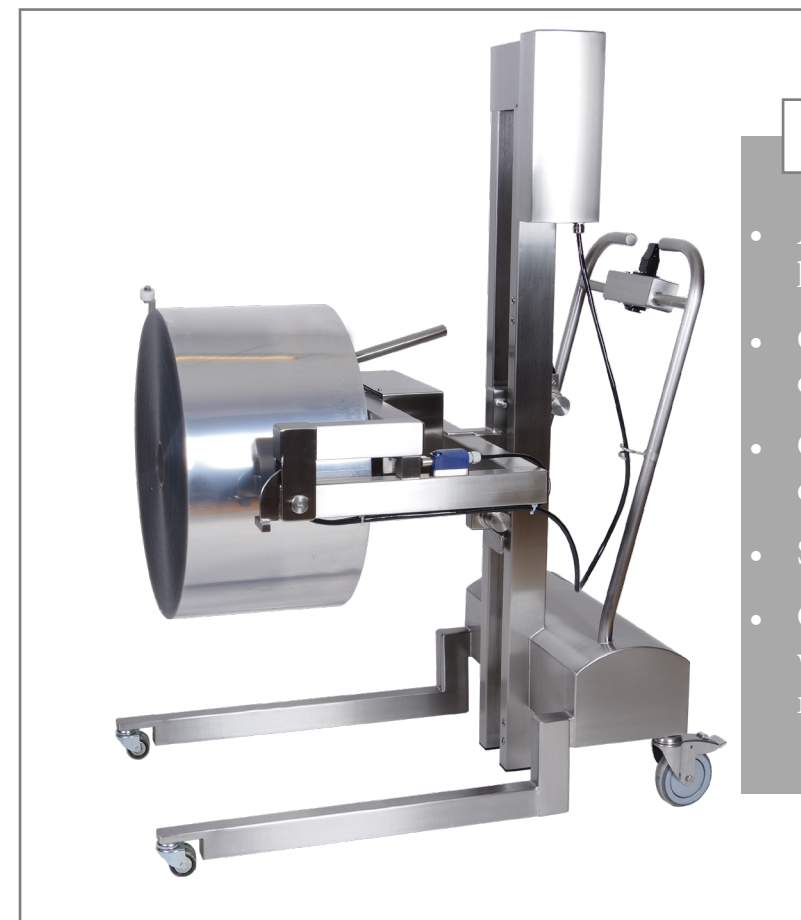
Tiltable platform

- A great solution to handle drums/boxes from a pallet to a reactor.
- Electrical tilt gives a good control of the flow when emptying the drum.
- Very flexible when it comes to handling different type of goods.
- The chute is in stainless steel 316, Ra 0,8 electro polished and can be removed for cleaning.



Telescopic function

- This function is perfect when you need to lift high but also need to get through a door or low passage.



Heavy duty roll handling

- An ergonomic solution to handle large and heavy rolls.
- Clamps electrically in the centre of the roll in a very safe way.
- Choose between manual or electrical tilt.
- Several extra safety functions.
- Can be equipped with a driving wheel to make the lifter easier to move.



To handle IBC

- Special designed lifter to handle an IBC to an isolator.
- Easy to dock thanks to the robust design and variable lifting speed.



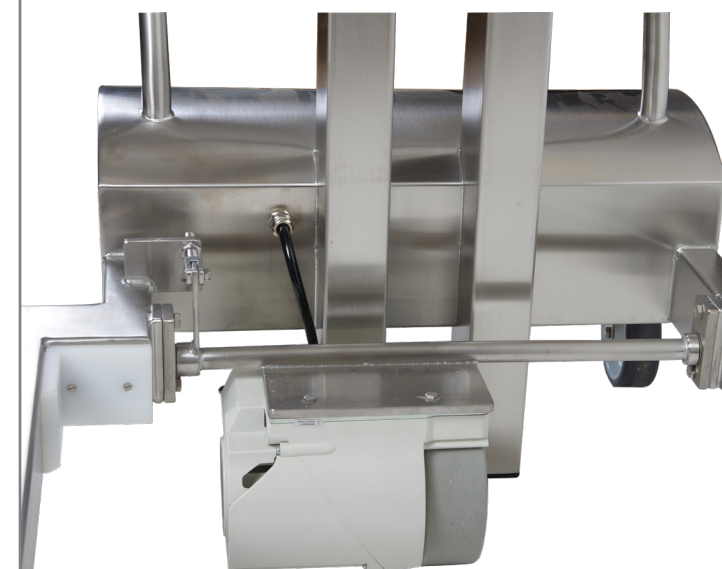
To handle big rolls

- A very compact lifter that handles big rolls.
- When combined with our storage rack you increase your efficiency by letting you have many rolls nearby your workstation.



Handling of racks

- To handle racks in a safe way directly from the washer/autoclave.
- The operator can adjust the height when loading/unloading goods from the rack which makes the work flow very ergonomic.
- Our accessory “storage rack” is perfect for this kind of handling due to the space saving storage of racks.



Driving wheel

- For our heavy duty lifters.
- Makes it easier to move when your goods is very heavy.
- This is an optional accessory.



Platform with rollers

- Lifting platform with rollers for a more ergonomic and easy way of handling goods.
- Perfect when you have many different kind of goods to handle.
- The chain holds the goods in place when moving the lifter.



Battery pack

- Separate backup battery.
- A great accessory when you use the lifter very frequently or when there's no time to charge the lifter.
- The battery pack is charged separately.
- Easy to use.
- This is an optional accessory.

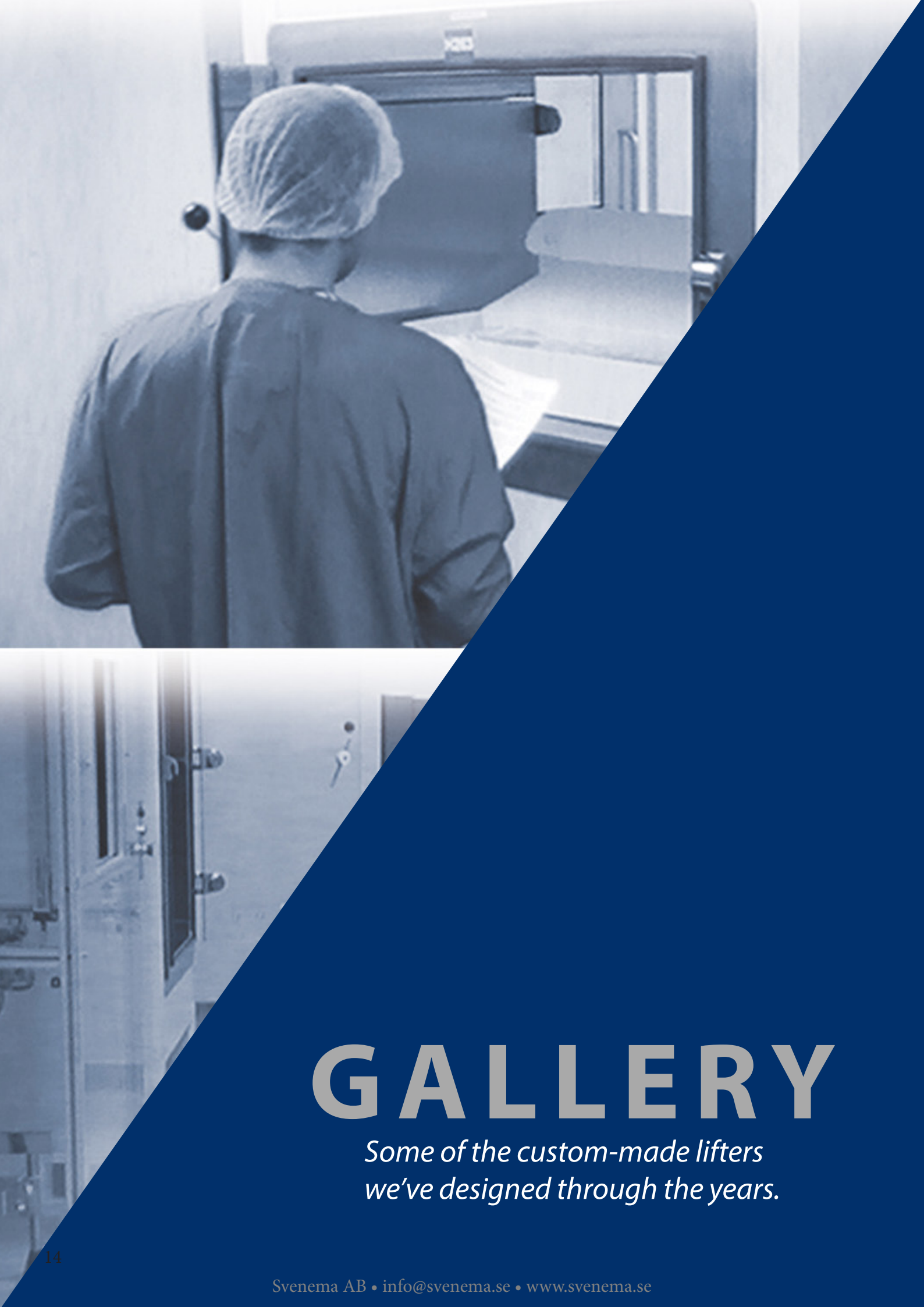
TECHNICAL DATA

- Max 300 kg.
- Max lifting height 2000 mm.
- All in stainless steel 304 or better.
- Stainless steel 316 with certificate is optional.
- Surface finish Ra 1.4 or better. Ra 0.8 is optional.
- Welding smooth and clean. Grinded and polished as an option.
- Smooth surfaces - no entrapment areas.
- All components incl. motor, gearbox and motor controller are industrial grade components.
- Maintenance free lifting mechanism. Lifting speed max 120 mm/s.
- Variable lifting, 0-100%, speed for best precision and smooth lifting.
- 24VDC system with high quality batteries. 2x12V 12 Ah.
- Battery charger 110-230 VAC 50-60 Hz.



WHY CHOOSE SVENEMA?

- Always in stainless steel 304 or 316.
- Ra finish 0,8 - 1,4.
- Hygienic design - easy to clean, minimizes the risk of cross contamination.
- cGMP.
- Specialized in cleanroom environments in the pharmaceutical industry.
- Only industrial components.
- Very low maintenance.
- Many years of experience of the pharmaceutical industries demanding environments.



GALLERY

Some of the custom-made lifters we've designed through the years.



Pneumatically driven column lifter. Can be used in ATEX zone 1,2,21 and 22.



Column lifter with electrical lift and tilt. Can handle containers up to 300 kg. The column lifter can be bolted in the floor or on the wall.



Mobile lifter for ATEX zone 1,2,21 and 22. We offer manually driven lifters or pneumatic solutions. No source of ignition.



Our heavy duty lifter MAXI 300 is a powerful and reliable lifter. With its robust design it can lift goods up to 300 kg.



Mobile lifter midi to handle sterile components into a syringe filling line.



Manual clamp and tilt for handling of drums. With the help of an adapter you can lift different sizes of drums.

SVENEMA AB

PHARMACEUTICAL EQUIPMENT SINCE 1995.



*Custom-made lifters for
demanding environments*



Svenema AB
Källbäckstrydsgatan 8
507 42 Borås, Sweden
+46 (0)33-14 05 70
info@svenema.se
www.svenema.se

